



ART
MUMBAI

Venue: Members Enclosure,
Mahalaxmi Racecourse, Mumbai

F. N. Souza
K. C. Pyne
K. G. Subramanian
Lalit Mohan Sen

STAND NO. 44

*The dimensions below are for artwork only

Overview

Emami Art showcases a diverse collection of works at Art Mumbai 2024, highlighting both emerging and established contemporary Indian artists, primarily from Bengal. The featured artists include **Ujjal Dey, Tapas Biswas, Soma Das, Sibaprasad Karchaudhuri, Shilpi Sharma, Suman Dey, Debashish Paul, Ghana Shyam Latua, Arunima Choudhury, Arindam Chatterjee, Ali Akbar PN, Prasanta Sahu, and Anjan Modak.**

The curated booth presents recent thought-provoking works that explore a range of contemporary themes such as environmental issues, historical reflections, land and agricultural politics, gender struggles, and more. Each piece reflects the artists' profound engagement with these crucial topics. In addition to the contemporary artworks, the exhibition features works by masters like **Kartick Chandra Pyne** and **LM Sen**. Pyne's playful paintings and Sen's rare, powerful photographs—an aspect of his work less known than his paintings—bringing added depth to the show.

The collection spans a variety of mediums, including acrylic on canvas, watercolour, ceramics, sculpture, textile art, archival photography, and more.



Ali Akbar P N (b.1996)

Procession of Mourners - 3

Acrylic on paper

Overall dimension variable

A - 6.2 x 8.2 in. (15.8 x 21 cm.)

B - 8.1 x 11.6 in. (20.7 x 29.7 cm.)

C - 7 x 10.1 in. (17.9 x 25.9 cm.)

Set of 3 works

2024, Baroda

Signed and dated '7/2/24' in English (on the reverse)

AB2964





Ali Akbar P N (b.1996)

Untitled

Acrylic on paper

Overall dimension variable

A - 9.4 x 12.5 in. (24 x 32 cm.)

B - 8.2 x 5.8 in. (21 x 14.8 cm.)

C - 7.1 x 9.4 in. (18.1 x 24 cm.)

D - 7.7 x 8.2 in. (19.8 x 21 cm.)

Set of 4 works

2024, Baroda

A,B,C - Signed and dated in English (on the reverse)

D - Unsigned

AB2963



Ali Akbar P N (b.1996)

Hate Hymn

Acrylic on paper

Overall dimension variable

A, B, C, D - 7 x 10.2 in. (18 x 26 cm.)

E - 5.7 x 7.1 in. (14.7 x 18.2 cm.)

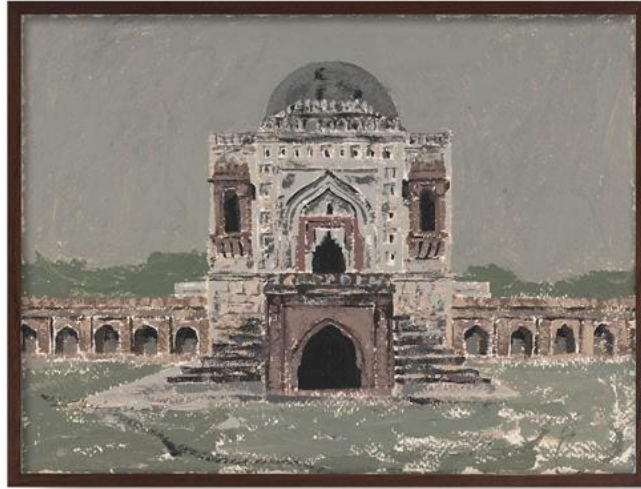
Set of 5 works

2024, Baroda

B, C, D - Signed and dated in English (on the reverse)

A, E - Unsigned

AB2971



Ali Akbar P N (b.1996)

Untitled

Acrylic on paper

Overall dimension variable

A and C - 7 x 9.4 in. (18 x 24 cm.)

B - 9.4 x 12.5 in. (24 x 32 cm.)

Set of 3 works

2024, Kolkata

Signed and dated '7/2/24' in English (on the reverse)

AB2969



Ali Akbar P N (b.1996)

Parallel River of Mahmudabad - 2

Acrylic on paper

30 x 35 in. (76.4 x 89 cm.) each

Set of 2 works

2024, Baroda

Signed and dated in English (on the reverse)

AB2970

Ali Akbar P N (b.1996)

Screw Pine in the Salty Wind - 1

Archival inkjet print on archival paper

Overall dimension variable

A - 7.7 x 11 in. (19.6 x 28 cm.) print size

8.3 x 11.5 in. (21.3 x 29.3 cm.) sheet size

B - 4.7 x 11.8 in. (12 x 30 cm.) print size

5.1 x 12.2 in. (13 x 31.1 cm.) sheet size

Edition of A and B - Unique

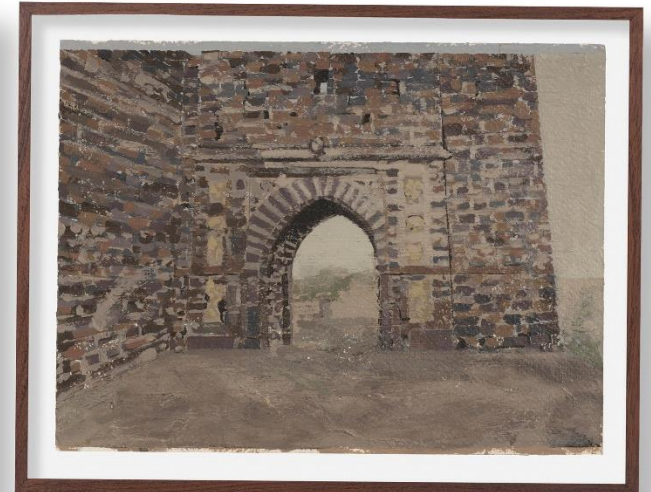
Set of 2 works

2024, Baroda

Signed and dated in English (lower right)

AB2966





Ali Akbar P N (b.1996)

Reincarnation of Myth - 3

Acrylic on paper

Overall dimension variable

A - 7.08 x 10.23 in. (18 x 26 cm.)

B - 9.05 x 12.91 in. (23 x 32.8 cm.)

C - 7.08 x 9.44 in. (18 x 24 cm.)

D - 7.08 x 9.44 in. (18 x 24 cm.)

Set of 4 works

2024, Baroda

Signed and dated in English (on the reverse)

AB2880



Ali Akbar P N (b.1996)

Reincarnation of Myth - 2

Acrylic on paper

Overall dimension variable

A - 22.44 x 33.85 in. (57 x 86 cm.)

B - 7.08 x 10.19 in. (18 x 25.9 cm.)

C - 9.44 x 12.51 in. (24 x 31.8 cm.)

Set of 3 works

2024, Baroda

A, B - Signed and dated in English (on the reverse)

AB2874





Ali Akbar P N (b.1996)

Hijron Ka Khanqah

Acrylic on paper

Overall dimension variable

A - 21.65 x 24.80 in. (55 x 63 cm.)

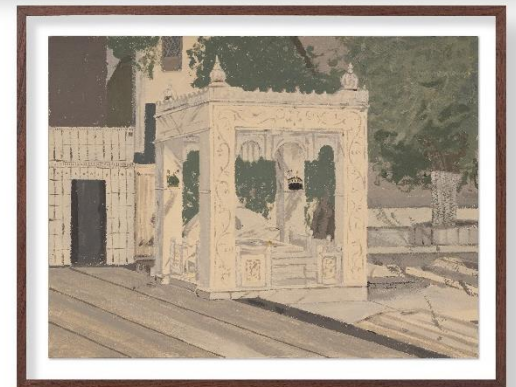
B - 9.44 x 12.51 in. (24 x 31.8 cm.)

Set of 2 works

2024, Baroda

A, B - Signed and dated in English (on the reverse)

AB2875





Detail Of Hijron Ka Khanqah



Ali Akbar PN (b.1996)

Chonakakkuthira - 4 (Series Chonakakkuthira)

Acrylic and inkjet print on acid-free paper

Overall dimension variable

A - 14 x 31 in. (35.5cm x 78.5 cm)

B - 9.2 x 12.2 in. (23.6 cm. x 31.2 cm)

2023, Baroda

Signed in English (on the reverse)

AB2489



Ali Akbar PN (b.1996)

Lion of Babylon(Study from Archive photograph)

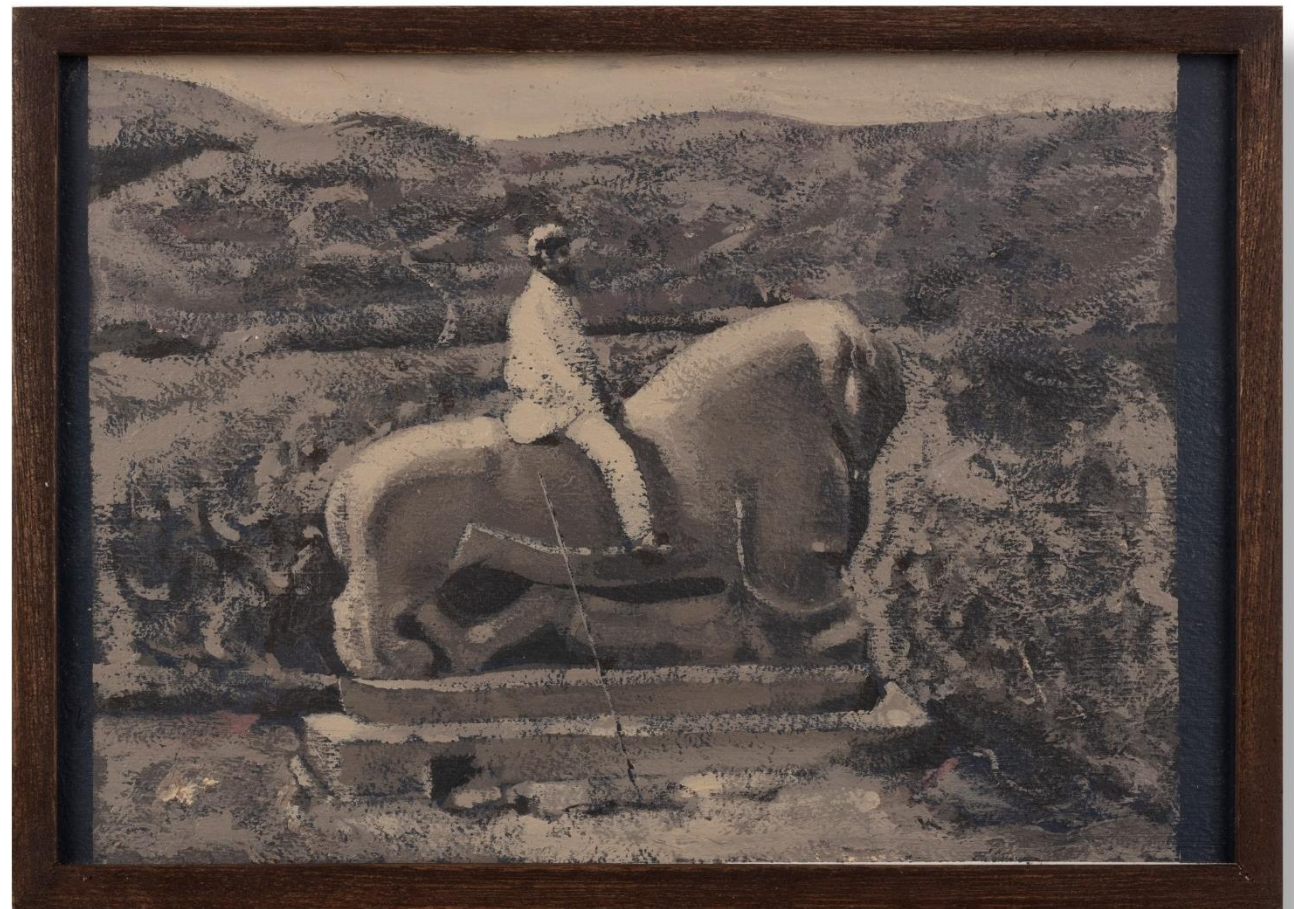
Acrylic on acid-free paper

6.7 x 9.8 in. (17 cm x 25 cm.)

2023, Baroda

Signed in English (on the reverse)

AB2488





Anjan Modak (b.1982)

Between Seen and Unseen- III (Series Between Seen and Unseen)

Acrylic, watercolour, archival ink, charcoal on Nepalese paper

pasted on plywood and enamel paint on iron

57.48 x 38.58 x 1.96 in. (146 x 98 x 5 cm.) approx.

2024, Kolkata

11.880 kg.

Signed and dated in English (on the reverse)

AB3001

Anjan Modak (b.1982)

Man with Objects

Archival ink on Nepalese paper

46 x 77 in. (116.85 x 195.6 cm.) overall frame size approx.

8.66 x 4.92 in. (21.5 x 12.5 cm.) each work size approx.

Set of 32 works

2024, Kolkata

Signed and dated in English (lower right)

AB3002





Anjan Modak (b.1982)

See You on the Way 3

Archival ink on Nepalese handmade paper stretched on a wooden

Tambour frame and iron nut

48 x 48 in. (121.9 x 121.9 cm.) overall frame size approx.

8.46 x 8.46 in. (21.5 x 21.5 cm.) work size each approx.

Set of 16 works

2024, Kolkata

Signed and dated in English (lower bottom)

AB3000

Anjan Modak (b.1982)

Behind the Screen

Archival ink on acid-free paper

36 x 27 in. (91.45 x 68.6 cm.) overall frame size approx.

8.26 x 5.90 in. (21 x 15 cm.) each work size approx.

Set of 9 works

2024, Kolkata

Signed and dated in English (on the front and reverse)

AB3370



Anjan Modak (b.1982)

Daily Observation-3

Acrylic ink on acid-free paper

62 x 34 in. (157.5 x 86.4 cm.) overall frame size approx.

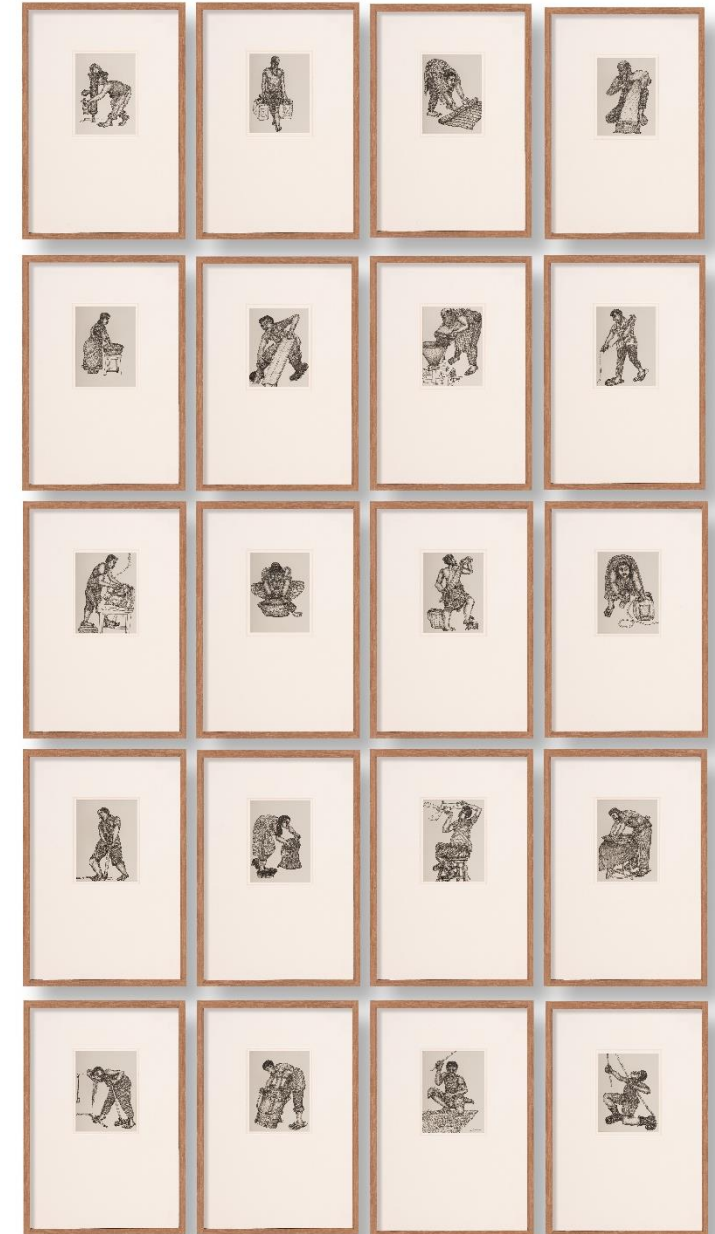
4.01 x 2.99 in. (10.2 x 7.6 cm.) each work size approx.

Set of 20 works

2023, Kolkata

Signed and dated in English (on the reverse)

AB2999





Detail of *Daily Observation-3*

Arindam Chatterjee (b.1972)

Encounter VI

Oil, dry pastel and charcoal on paper

35.8 x 33.8 in. (91 x 85.8 cm.)

2023, Kolkata

Signed in English (upper right and on the reverse)

AB2600



Arindam Chatterjee (b.1972)

Bare Truth IV

Oil on paper

35.8 x 34 in. (91 x 86.3 cm.)

2022, Kolkata

Signed in English (lower right and on the reverse)

AB2601



Arindam Chatterjee (b.1972)

Encounter II

Oil and graphite on paper

35.8 x 33.8 in. (91 x 85.8 cm.)

2022, Kolkata

Signed in English (lower right and on the reverse)

AB2594



Arindam Chatterjee (b.1972)

Encounter I

Oil and graphite on paper

35.5 x 34 in. (90 x 86.3 cm.)

2022, Kolkata

Signed in English (upper right and on the reverse)

AB2593



Arindam Chatterjee (b.1972)

Encounter IV

Oil, watercolour and dry pastel on paper

35.8 x 33.8 in. (91 x 85.8 cm.)

2023, Kolkata

Signed in English (upper left and on the reverse)

AB2596



Arindam Chatterjee (b.1972)

Encounter V

Oil and dry pastel on paper

35.8 x 33.8 in. (91 x 85.8 cm.)

2022, Kolkata

Signed in English (upper left and on the reverse)

AB2597



Arindam Chatterjee (b.1972)

Fragile Existence X
Watercolour and charcoal on paper
35 x 27 in. (89 x 68.5 cm.)
2022, Kolkata
Signed in English (lower right)

AB2619



Arindam Chatterjee (b.1972)

Metamorphoses II

Watercolour on paper

22.8 x 30 in. (58 x 76.2 cm.)

2020, Kolkata

Signed in English (lower right and on the reverse)

AB2613



Arindam Chatterjee (b.1972)

Parables of Twilight I

Watercolour, charcoal and ink on paper

15 x 12.2 in. (38 x 31 cm.)

2020, Kolkata

Signed in English (lower right and on the reverse)

AB2563



Arindam Chatterjee (b.1972)

Parables of Twilight II

Watercolour, charcoal and dry pastel on paper

15 x 12.2 in. (38 x 31 cm.)

2020, Kolkata

Signed in English (lower right and on the reverse)

AB2564



Arindam Chatterjee (b.1972)

Parables of Twilight III

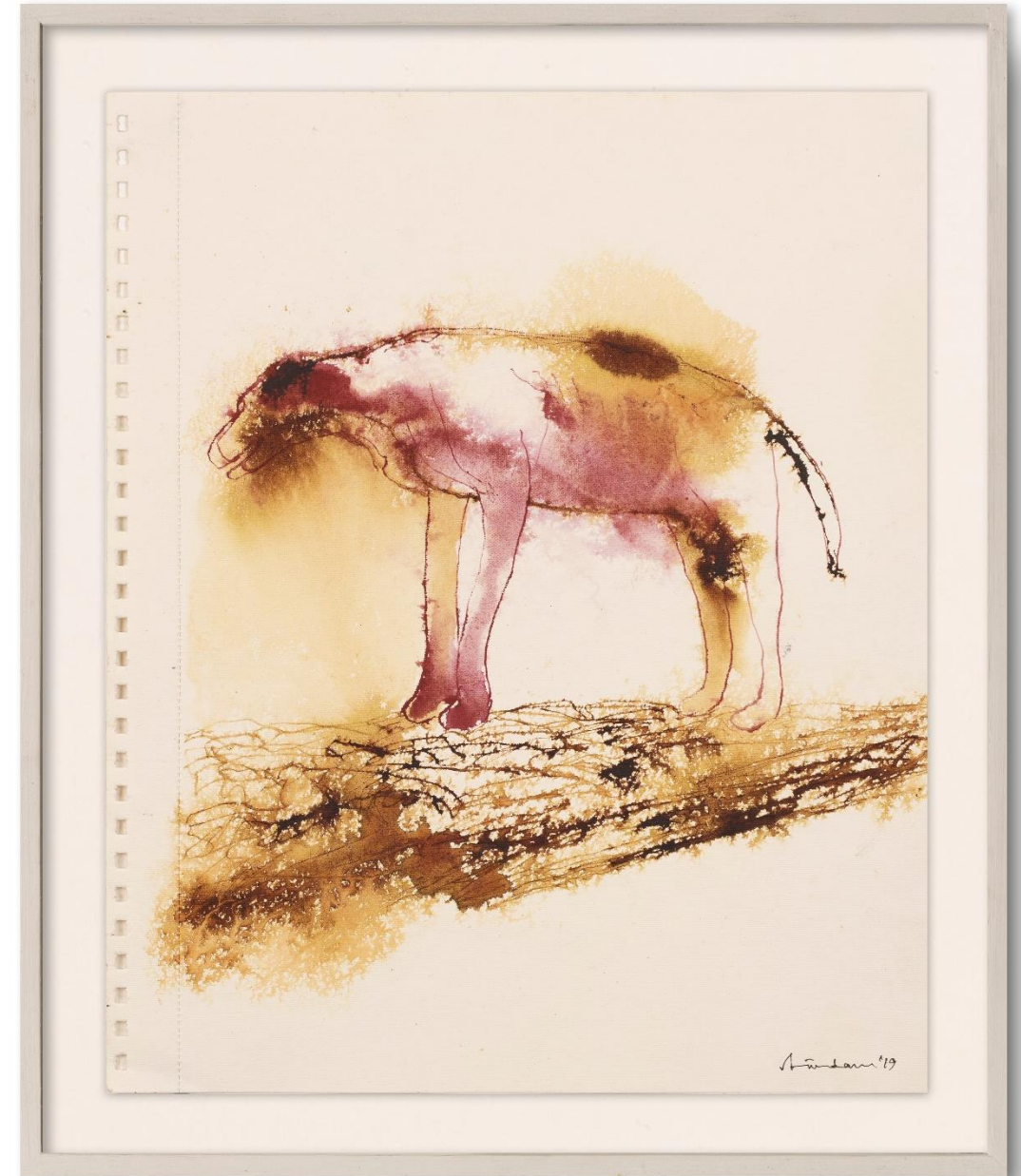
Watercolour and ink on paper

15 x 12.2 in. (38 x 31 cm.)

2019, Kolkata

Signed in English (lower right and on the reverse)

AB2565



Arindam Chatterjee (b.1972)

Parables of Twilight IV

Watercolour and charcoal on paper

15 x 12.2 in. (38 x 31 cm.)

2020, Kolkata

Signed in English (lower right and on the reverse)

AB2566



Arindam Chatterjee (b.1972)

Parables of Twilight V

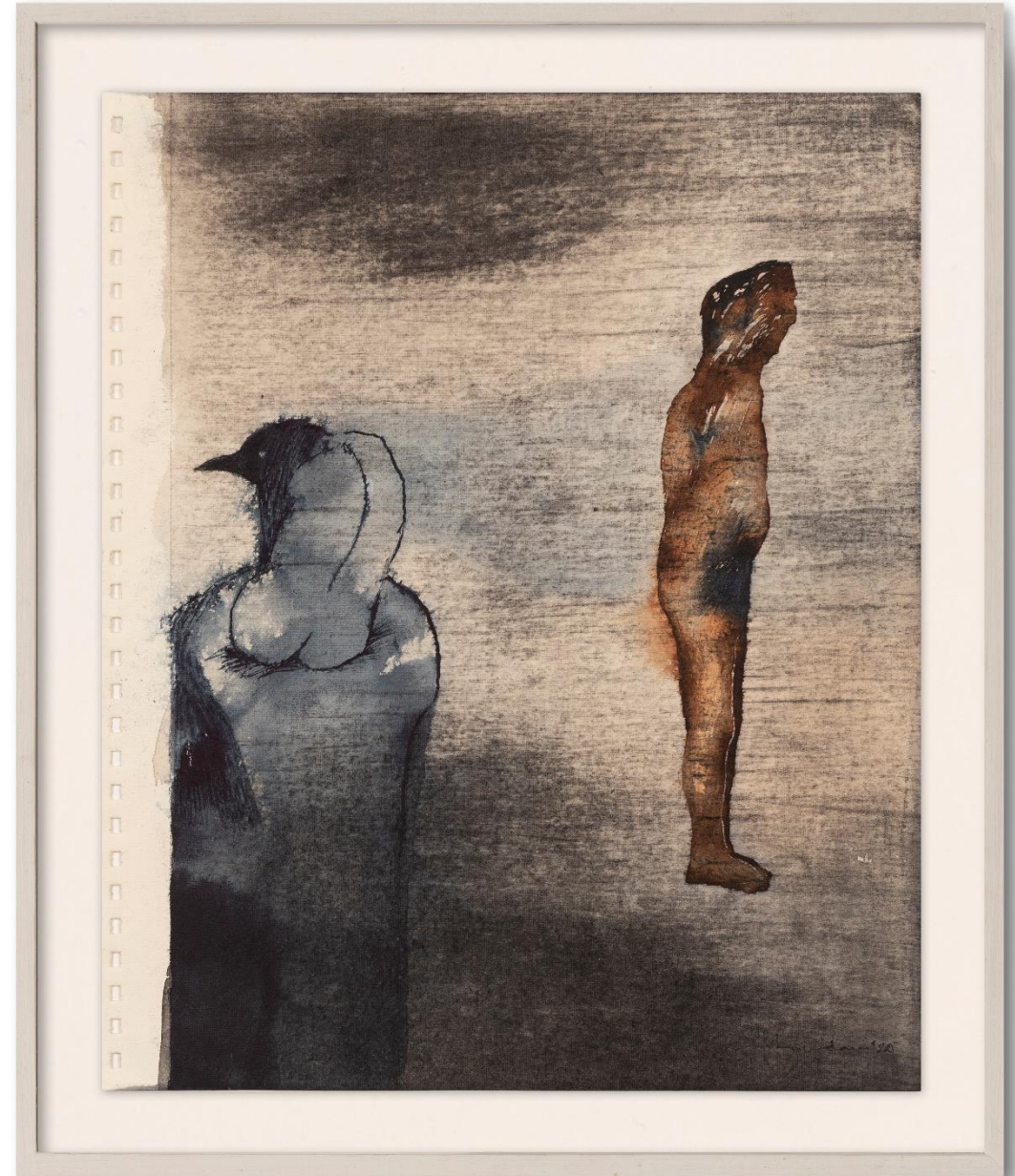
Watercolour and charcoal on paper

15 x 12.2 in. (38 x 31 cm.)

2020, Kolkata

Signed in English (lower right and on the reverse)

AB2567



Arindam Chatterjee (b.1972)

Parables of Twilight VI

Gouache, charcoal and ink on paper

15 x 12.2 in. (38 x 31 cm.)

2020, Kolkata

Signed in English (lower right and on the reverse)

AB2568



Arindam Chatterjee (b.1972)

Parables of Twilight VII
Watercolour, charcoal and ink on paper
15 x 12.2 in. (38 x 31 cm.)
2020, Kolkata
Signed in English (lower right and on the reverse)

AB2569



Arindam Chatterjee (b.1972)

Parables of Twilight VIII

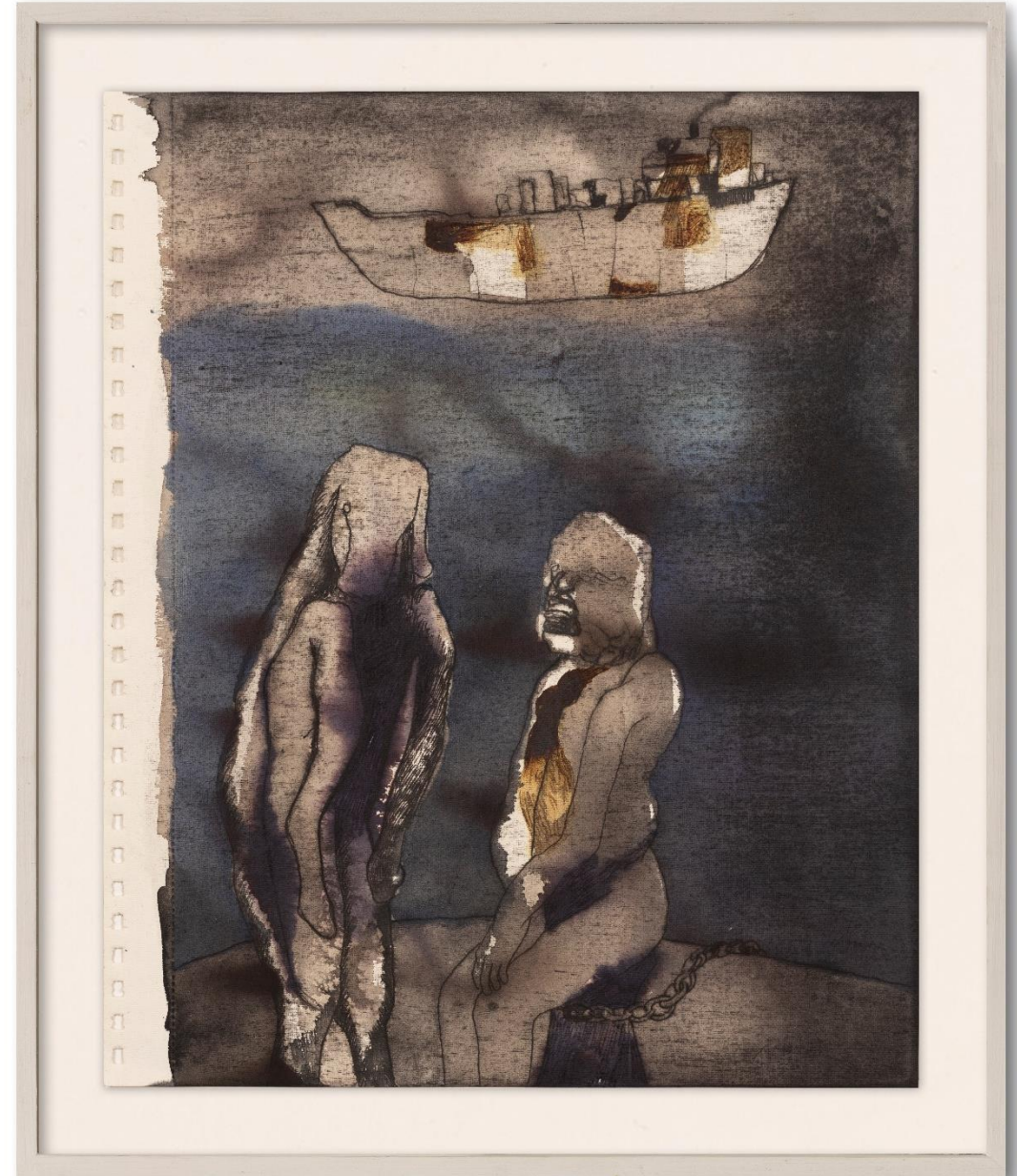
Watercolour, charcoal and ink on paper

15 x 12.2 in. (38 x 31 cm.)

2020, Kolkata

Signed in English (lower right and on the reverse)

AB2570





Arindam Chatterjee (b.1972)

Figures I - X

Oil on paper

20 x 14 in. (50.8 x 35.5 cm.) each approx.

Set of 10 works

2019, Kolkata

Signed in English (on the recto and verso)

AB2553, AB2554, AB2555, AB2556, AB2557

AB2558, AB2559, AB2560, AB2561, AB2562

Arunima Choudhury (b.1950)

Two Sisters

Vegetable colour on handmade paper

34.05 x 27.08 in. (86.5 x 68.8 cm.)

2024, Kolkata

Signed and dated in English (lower left)

AB3108



Arunima Choudhury (b.1950)

Whispers of Love

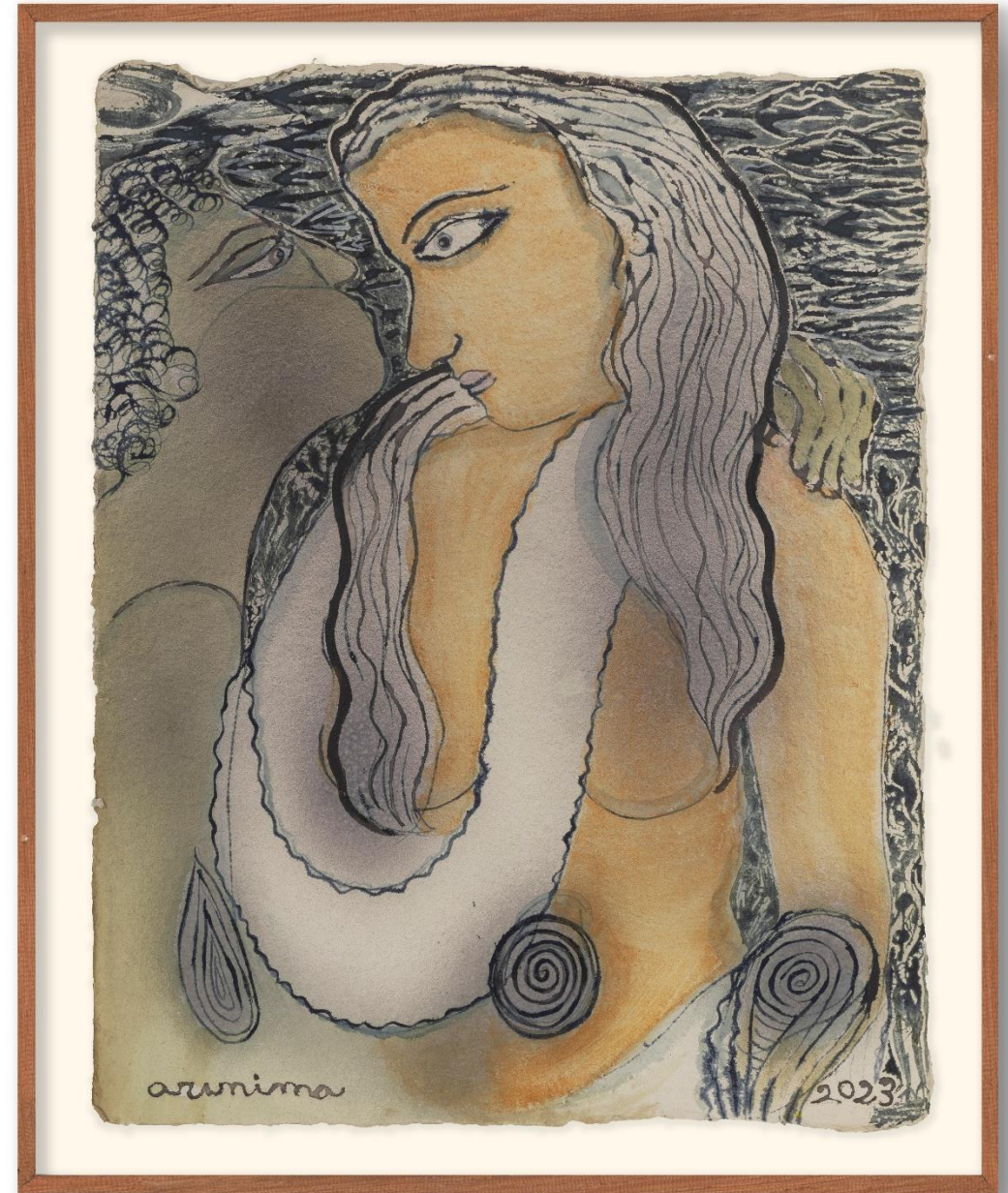
Vegetable colour on handmade paper

34.25 x 27.16 in. (87 x 69 cm.)

2023, Kolkata

Signed and dated in English (lower left)

AB3107



Arunima Choudhury (b.1950)

Mother and Child

Vegetable colour on handmade paper

27.36 x 22.16 in. (69.5 x 56.3 cm.)

2020, Kolkata

Signed and dated in English (lower left)

AB3102



Arunima Choudhury (b.1950)

Story of Palestine

Vegetable colour on handmade paper

27.95 x 22.24 in. (71 x 56.5 cm.)

2020, Kolkata

Signed and dated in English (lower right)

AB3104



Arunima Choudhury (b.1950)

Solidarity
Vegetable colour on handmade paper
27.95 x 22.24 in. (71 x 56.5 cm.)
2020, Kolkata
Signed and dated in English (lower left)

AB3105



Arunima Choudhury (b.1950)

Desire

Vegetable colour on handmade paper

27.95 x 22.24 in. (71 x 56.5 cm.)

2010, Kolkata

Signed and dated in English (lower right)

AB3106



Arunima Choudhury (b.1950)

Lovers

Vegetable colour on handmade paper

27.95 x 22.44 in. (71 x 57 cm.)

2020, Kolkata

Signed and dated in English (lower left)

AB3103





Arunima Choudhury

Life is Beautiful

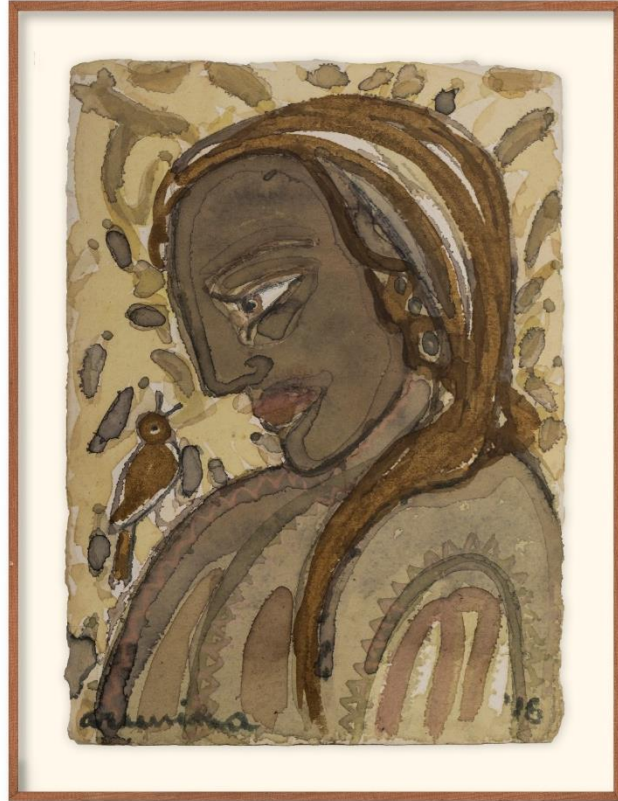
Vegetable colour on handmade paper

52 x 118 in. (132 x 299.7 cm.) overall approx.

2015 - 2023, Kolkata

Signed in English and Bengali

AB2337 - AB2353



Arunima Choudhury (b.1950)

My Friend

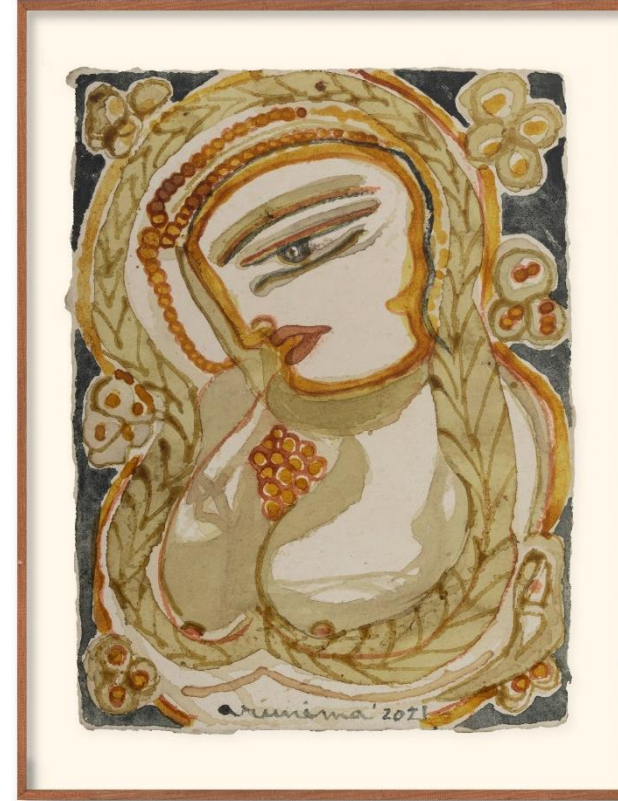
Vegetable colour on handmade paper

11.14 x 8.1 in. (28.3 x 20.6 cm.)

2016, Kolkata

Signed and dated in English (lower left)

AB3095



Arunima Choudhury (b.1950)

Aalo (Light)

Vegetable colour on handmade paper

11.02 x 8.26 in. (28 x 21 cm.)

2021, Kolkata

Signed and dated in English (lower middle)

AB3096



Arunima Choudhury (b.1950)

Blossoms 2

Vegetable colour on handmade paper

9.76 x 10.82 in. (24.8 x 27.5 cm.)

2021, Kolkata

Signed and dated in English (lower left)

AB3098



Arunima Choudhury (b.1950)

Blossoms 1

Vegetable colour on handmade paper

10.78 x 9.64 in. (27.4 x 24.5 cm.)

2021, Kolkata

Signed and dated in English (lower left)

AB3097



Arunima Choudhury (b.1950)

Wild Flowers

Vegetable colour on handmade paper

17.91 x 15.15 in. (45.5 x 38.5 cm.)

2020, Kolkata

Signed and dated in English (lower right)

AB3099



Arunima Choudhury (b.1950)

Misty Morning

Vegetable colour on handmade paper

17.91 x 15.35 in. (45.5 x 39 cm.)

2020, Kolkata

Signed and dated in English (lower right)

AB3101



Arunima Choudhury (b.1950)

Three White Birds

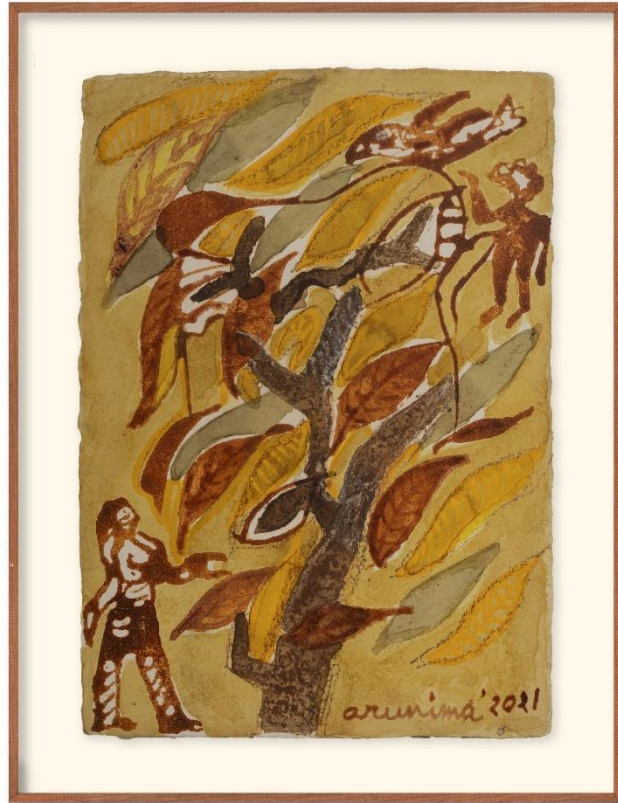
Vegetable colour on handmade paper

18.11 x 15.23 in. (46 x 38.7 cm.)

2022, Kolkata

Signed and dated in English (lower left)

AB3100



Arunima Choudhury (b.1950)

Whispers of Spring

Vegetable colour on handmade paper

11.69 x 8.46 in. (29.7 x 21.5 cm.)

2021, Kolkata

Signed and dated in English (lower right)

AB3094



Arunima Choudhury (b.1950)

Blooming Flowers

Vegetable colour on handmade paper

13.38 x 5.15 in. (34 x 13.1 cm.)

2023, Kolkata

Signed and dated in English (lower left)

AB3093

Debashish Paul (b.1994)

Skin of Unfolding Desires

Latex rubber, acrylic ink, threads, stone eyes, cowrie shells, and brass washer

127.9 x 45.6 in. (325 x 116 cm.) approx.

2024, Varanasi

8.160 kg.

Unsigned

AB2993



Debashish Paul (b.1994)

The Skin of Dreams 2

Latex rubber, plastic and crystal beads, acrylic ink, threads, cowries shell, plastic helmet and brass washer

Overall dimension variable

Cape - 68.11 x 68.11 x 1.37 in. (174 x 174 cm.) dia. approx.

8.940 kg.

Headpiece - 17.71 x 15.15 x 15.15 in. (45 x 38.5 x 38.5 cm.) approx.

5.650 kg.

Set of 2 works

2024, Varanasi

Overall weight - 14.59 kg.

Unsigned

AB2994



Debashish Paul (b.1994)

The Ancient Dream 3

Acrylic ink, acrylic, stone eyes, cowries shell,
and threads on 100% cotton on Fabriano paper
89.7 x 33 in. (228 x 84 cm.) approx.

Polyptych

2024, Varanasi

0.450 kg.

Signed and dated in English (on the reverse)

AB2998



Debashish Paul (b.1994)

The Ancient Dream 1

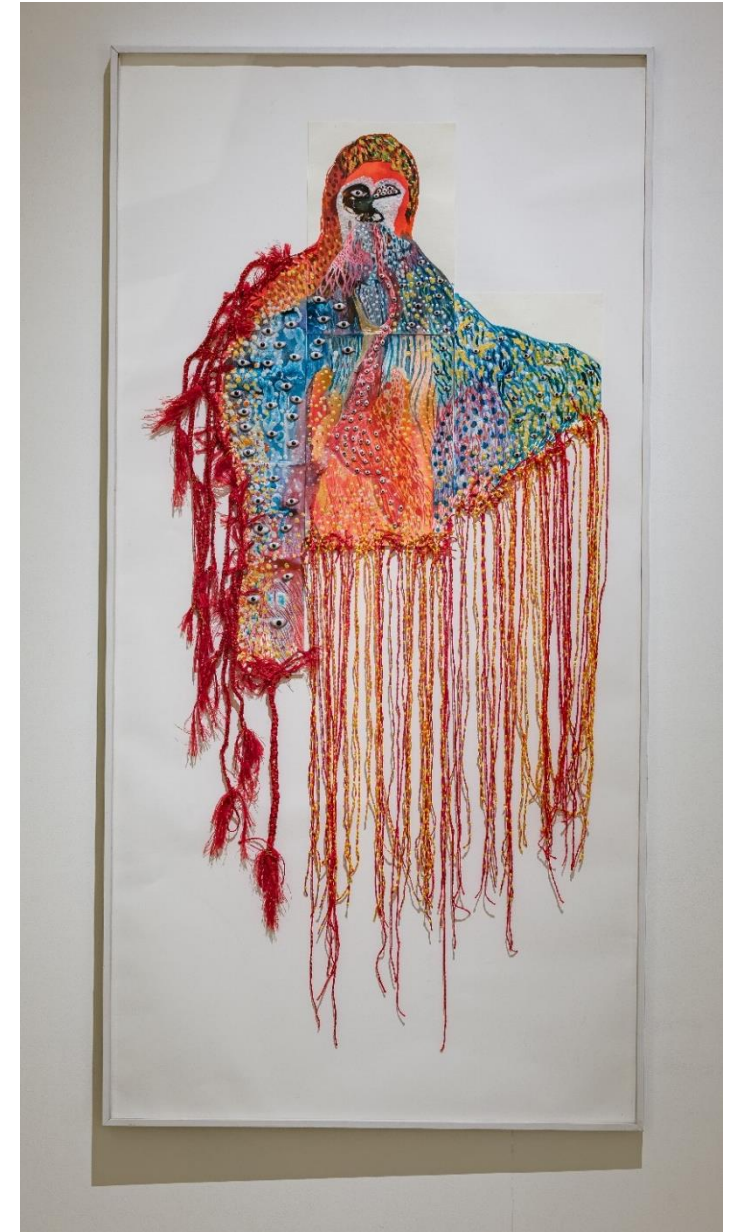
Acrylic ink, acrylic, stone eyes, cowries shell,
and threads on 100% cotton Fabriano paper
46 x 37.40 in. (117 x 95 cm.) approx.

2024, Varanasi

0.290 kg.

Signed and dated in English (on the reverse)

AB2991



Debashish Paul (b.1994)

The Ancient Dream 2

Acrylic ink, acrylic, stone eyes, cowries shell,
and threads on 100% cotton on Fabriano paper
42.12 x 20 in. (107 x 51 cm.) approx.

Polyptych

2024, Varanasi

0.300 kg.

Signed and dated in English (on the reverse)

AB2988



Ghana Shyam Latua (b.1992)

Encroaching Placidity 1 (Series Encroaching Placidity)

Watercolour, pen, ink and pin work on paper

58.3 x 40.7 in. (148.2 X 103.5 cm.)

2024, Santiniketan

Signed in English (on the reverse)

AB3077



Ghana Shyam Latua (b.1992)

Encroaching Placidity 2 (Series Encroaching Placidity)

Pen, ink and pin work on paper

38.58 x 58.46 in. (98 X 148.5 cm.)

2024, Santiniketan

Signed in English (on the reverse)

AB3078





Ghana Shyam Latua (b.1992)

Encroaching Placidity 3 (Series Encroaching Placidity)

Water colour, pen, ink and pin work on paper

22.04 x 30 in. (56 x 76.2 cm.)

2024, Santiniketan

Signed in English (on the reverse)

AB3079



Detail of *Encroaching Placidity 3* (Series *Encroaching Placidity*)

Ghana Shyam Latua (b.1992)

In the Vicinity of Birbhum II
Pen, ink and pin-work on paper
22 x 30 in. (55.8 x 76.2 cm.)
2024, Santiniketan
Signed in English (on the reverse)

AB2429



Ghana Shyam Latua (b.1992)

In the Vicinity of Birbhum III
Pen, ink and pin-work on paper
22 x 30 in. (55.8 x 76.2 cm.)
2024, Santiniketan
Signed in English (on the reverse)

AB2430



Ghana Shyam Latua (b.1992)

In the Vicinity of Birbhum I

Pen, ink and pin-work on paper

45 x 69.5 in. (114.3 x 176.5 cm.)

2024, Santiniketan

Signed in English (on the reverse)

AB2431



Ghana Shyam Latua (b.1992)

In the vicinity of Santiniketan I

Pen, ink and pin-work on paper

11 x 16.5 in. (28 x 42 cm.)

2023, Santiniketan

Signed in English (on the reverse)

AB2511



Ghana Shyam Latua (b.1992)

In the vicinity of Santiniketan II

Pen, ink and pin-work on paper

11 x 16.5 in. (28 x 42 cm.)

2022, Santiniketan

Signed in English (on the reverse)

AB2512



Ghana Shyam Latua (b.1992)

In the vicinity of Santiniketan III

Pen, ink and pin-work on paper

11 x 16.5 in. (28 x 42 cm.)

2023, Santiniketan

Signed in English (on the reverse)

AB2513



Ghana Shyam Latua (b.1992)

In the vicinity of Santiniketan IV

Pen, ink and pin-work on paper

11 x 16.5 in. (28 x 42 cm.)

2023, Santiniketan

Signed in English (on the reverse)

AB2514



Ghana Shyam Latua (b.1992)

In the vicinity of Santiniketan V
Pen, ink and pin-work on paper
11 x 16.5 in. (28 x 42 cm.)
2023, Santiniketan
Signed in English (on the reverse)

AB2515



Ghana Shyam Latua (b.1992)

In the vicinity of Santiniketan VI

Pen, ink and pin-work on paper

11 x 16.5 in. (28 x 42 cm.)

2023, Santiniketan

Signed in English (on the reverse)

AB2516



Ghana Shyam Latua (b.1992)

In the vicinity of Santiniketan VII
Pen, ink and pin-work on paper
11 x 16.5 in. (28 x 42 cm.)
2023, Santiniketan
Signed in English (on the reverse)

AB2517



Prasanta Sahu (b.1968)

Study of a Multi-Layered Landscape

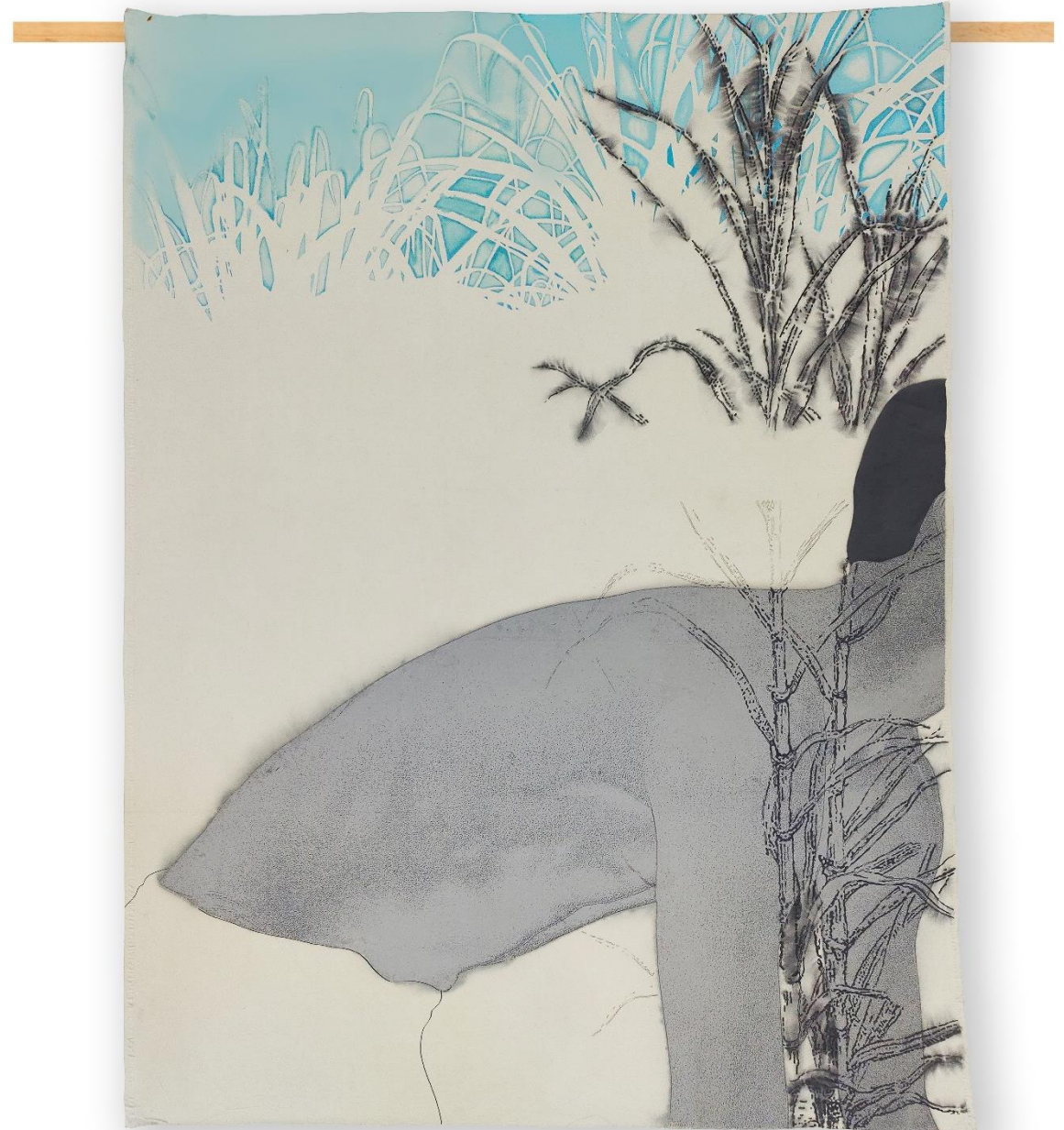
Acrylic, clear gesso, graphite and text on unprimed canvas

81 x 59 in. (205.7 x 149.8 cm.)

2023 - 2024, Santiniketan

Signed in English (on the reverse)

AB1406



Prasanta Sahu (b.1968)

Wheels in Motion

Terracotta platter, Nepalese paper, acrylic colour and
graphite on board (sculptural installation)

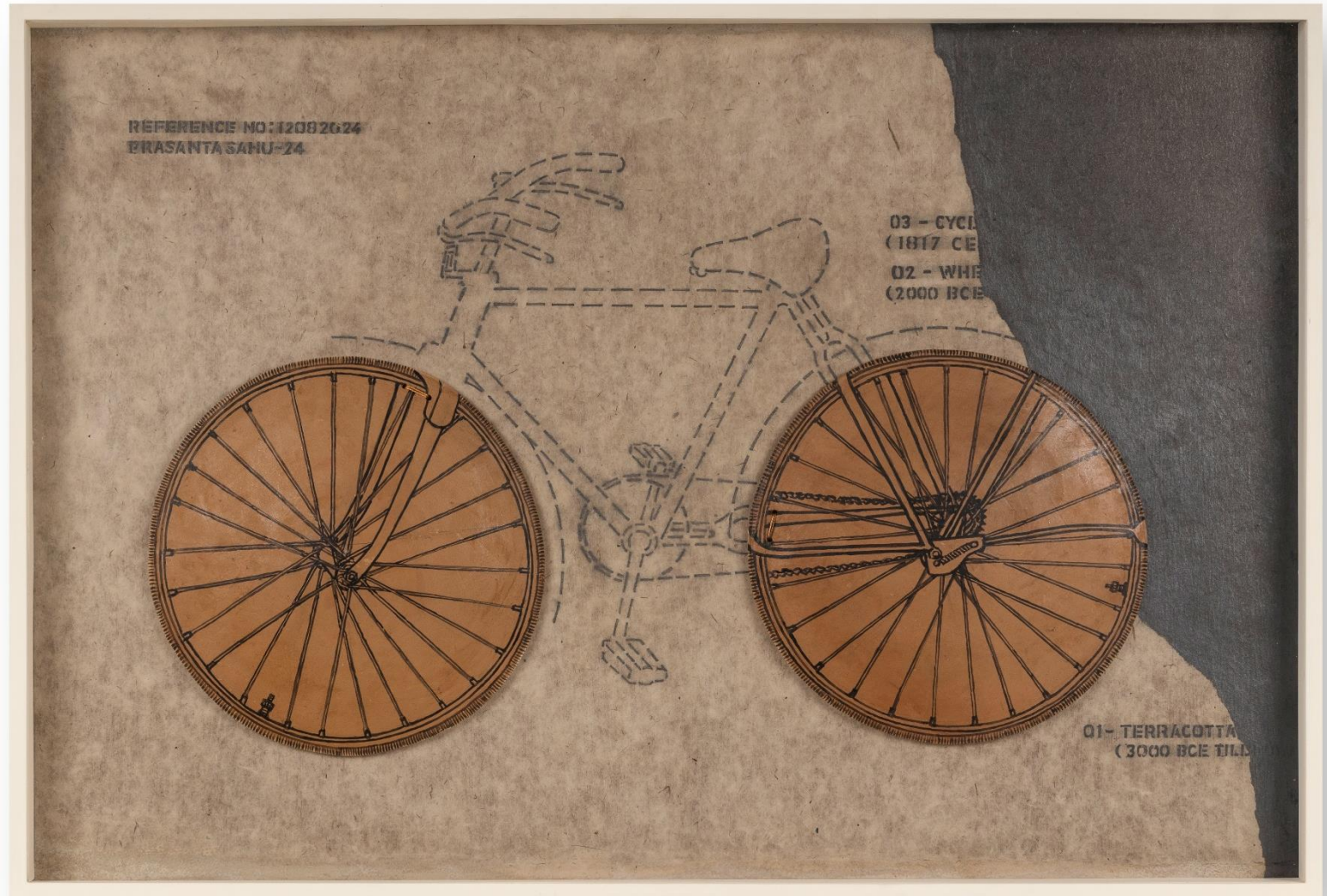
21.65 x 32.08 x 1 in. (55 x 81.5 x 2.54 cm.)

2024, Santiniketan

4.510 kg.

Unsigned

AB3371





AB3372

Prasanta Sahu (b.1968)

Pavement Stories

Ink on acid-free paper

A, C, D, E, F - 8.18 x 11.73 in. (20.8 x 29.8 cm.) each

B - 11.73 x 8.18 in. (29.8 x 20.8 cm.)

Set of 6 works

2024, Santiniketan

Signed and dated in English (on the reverse)

AB3376





Prasanta Sahu (b.1968)

Potato Eaters - II

Ink and watercolor on acid-free paper

8.22 x 23.46 in. (20.9 x 59.6 cm.) overall

8.22 x 11.73 in. (20.9 x 29.8 cm.) each

Diptych

2024, Santiniketan

Signed and dated in English (on the reverse)

AB3374

Prasanta Sahu (b.1968)

Untitled

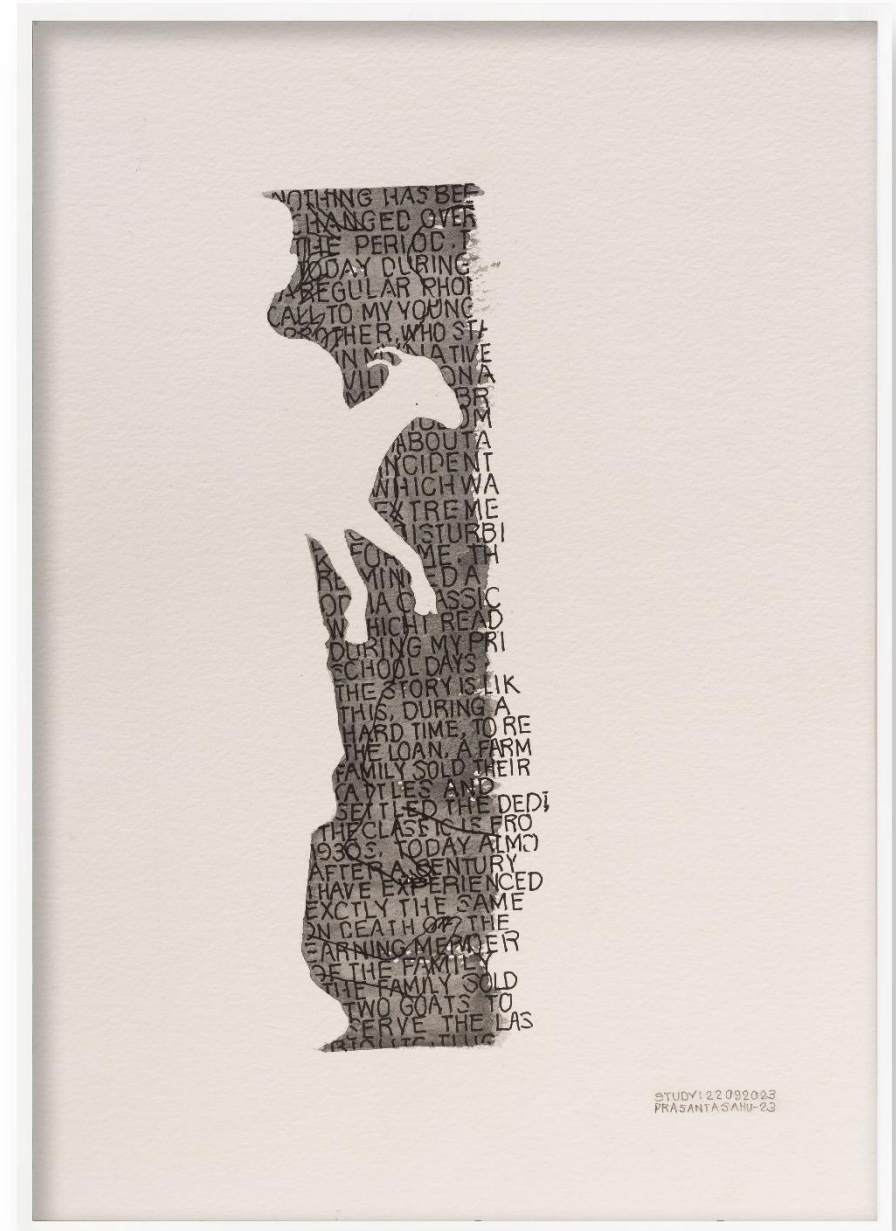
Ink on acid-free paper

11.73 x 8.22 in. (29.8 x 20.8 cm.)

2023, Santiniketan

Unsigned

AB3375



STUDY 122092023
PRASANTA SAHU-23



Prasanta Sahu (b.1968)

The 19th week of 2023; (8th May 2023 to 14th May 2023)

Hand-woven tapestry with two-ply newspaper threads and fishing wire

Overall dimension 80 x 188.5 in. (203.2 x 478.79 cm.) approx.

A - 79.5 x 23.5 in. (202 x 60 cm.) approx.

B - 80 x 23.8 in. (203.2 x 60.5 cm.) approx.

C - 80 x 23.5 in. (203.2 x 60 cm.) approx.

D - 80 x 23.5 in. (203.2 x 60 cm.) approx.

E - 80 x 23.5 in. (203.2 x 60 cm.) approx.

F - 80 x 23.5 in. (203.2 x 60 cm.) approx.

G - 80 x 23.5 in. (203.2 x 60 cm.) approx.

2023 - 2024, Santiniketan

Unsigned

AB2520

**Tibetans weave dreams
in Arunachal camp**

**The activist who
became an artist**

Top Performers

Detail of *The 19th week of 2023; (8th May 2023 to 14th May 2023)*

chilling truth

Prasanta Sahu (b.1968)

The Drumstick Tree and Other Stories

Ink, graphite, watercolour and tracing paper on acid-free paper
29 x 38 in. (73.66 x 96.52 cm.) overall dimension approx.

6 x 8 in. (15 x 20 cm.)

8.25 x 12 in. (21 x 30 cm.)

8 x 6 in. (20 x 15 cm.)

8.25 x 12 in. (21 x 30.5 cm.)

8.25 x 12 in. (21 x 30.5 cm.)

6 x 8.25 in. (15 x 21 cm.)

5 x 7 in. (12.7 x 17.7 cm.)

8.5 x 12 in. (22 x 30 cm.)

8.5 x 12 in. (22 x 30 cm.)

Set of 8 works

2022, Santiniketan

Signed in English (on the reverse)

AB1006, AB1097, AB1047, AB1066, AB1062, AB1007, AB1089, AB1065





Prasanta Sahu (b.1968)

Suburban Shadows

Ink on acid-free paper

15 x 48 in. (38.1 x 121.92 cm.) overall dimension approx.

7 x 5 in. (17.78 x 12.7 cm.) each

Set of 16 works

2019

Signed in English (on the reverse)

C5648



Shilpi Sharma (b.1997)

Curling Blues (Series Curling Blues)

Natural pulp clay

Overall dimension variable

A - 18.11 x 9.4 x 2.16 in. (46 x 24 x 5.5 cm.) approx.

B - 14.29 x 9.44 x 3.34 in. (36.3 x 24 x 8 cm.) approx.

C - 12.20 x 4.72 x 2.36 in. (31 x 12 x 6 cm.) approx.

D - 15.74 x 8.26 x 2.95 in. (40 x 21 x 7.5 cm.) approx.

E - 14.17 x 7.87 x 2.51 in. (36 x 20 x 6.4 cm.) approx.

Set of 5 works

2024, Santiniketan

Overall weight 3.86 kg.

Unsigned

AB3087



Shilpi Sharma (b.1997)

Terra's Sprout

Natural pulp clay

Overall dimension variable

A - 7.08 x 7.08 x 7.08 in. (18 x 18 x 18 cm.) approx.

B - 8.26 x 7.48 x 7.67 in. (21 x 19 x 19.5 cm.) approx.

C - 5.31 x 5.31 x 5.31 in. (13.5 x 13.5 x 13.5 cm.) approx.

D - 5.11 x 5.90 x 5.51 in. (13 x 15 x 14 cm.) approx.

E - 4.21 x 5.51 x 5.51 in. (10.7 x 14 x 14 cm.) approx.

F - 8.46 x 7.48 x 7.67 in. (21.5 x 19 x 19.5 cm.) approx.

Set of 6 works

2024, Santiniketan

Overall weight variable

8.510 kg.

Unsigned

AB3088





Shilpi Sharma (b.1997)

Darkening Mould

Natural pulp clay

4.25 x 7.87 x 9.05 in. (10.8 x 20 x 23 cm.) approx.

2024, Santiniketan

0.400 kg.

Unsigned

AB3089

Shilpi Sharma (b.1997)

Final Carcass

Natural pulp clay

3.54 x 9.84 x 11.22 in. (9 x 25 x 28.5 cm.) approx.

2024, Santiniketan

0.440 kg.

Unsigned

AB3090





Shilpi Sharma (b.1997)

Nocturnal Bloom

Natural pulp clay

3.07 x 12.59 x 12.59 in. (7.8 x 32 x 32 cm.) approx.

2024, Santiniketan

0.560 kg.

Unsigned

AB2491

Shilpi Sharma (b.1997)

Unfolding Crater

Natural pulp clay, stoneware and glossy brown metallic glaze

Overall size variable

A - 8 x 8 x 2.2 in. (20.3 x 20.3 x 5.5 cm.) approx

B - 7 x 11.4 x 2 in. (17.7 x 29 x 5 cm.) approx

C - 8.6 x 9 x 1.5 in. (22 x 22.8 x 3.8 cm.) approx

D - 10.4 x 10.4 x 2 in. (26.4 x 26.4 x 5 cm.) approx

E - 11 x 11 x 2 in. (28.5 x 28 x 5 cm.) approx

F - 10.5 x 10.5 x 3 in. (26.6 x 26.6 x 8 cm.) approx

Suite of 6 works

2023, Shantiniketan

Unsigned

AB2491



Shilpi Sharma (b.1997)

Reckoning Splashes

Natural pulp clay, stoneware body, metallic black glaze
35 x 67.5 in. (88.9 x 171.45 cm.) overall approx.

A - 14.76 x 7.5 x 2.55 in. (37.5 x 19 x 6.5 cm) approx.

B - 12 x 6.5 x 2.55 in. (30.5 x 16.5 x 6.5 cm) approx.

C - 8.66 x 3.34 x 1.77 in. (22 x 8.5 x 4.5 cm) approx.

D - 12 x 5.7 x 3.3 in. (30.5 x 14.5 x 8.5 cm) approx.

E - 13.77 x 6.5 x 3.93 in. (35 x 16.5 x 10 cm) approx.

F - 15.55 x 7.08 x 3.93 in. (39.5 x 18 x 10 cm) approx.

G - 9.05 x 3.34 x 1.37 in. (23 x 8.5 x 3.5 cm) approx.

H - 15.55 x 7.08 x 3.93 in. (39.5 x 18 x 10 cm) approx.

I - 13.58 x 6.69 x 3.54 in. (34.5 x 17 x 9 cm) approx.

J - 13.97 x 5.90 x 4.13 in. (35.5 x 15 x 10.5 cm) approx.

K - 13.77 x 6.88 x 3.34 in. (35 x 17.5 x 8.5 cm) approx.

L - 14.37 x 6.49 x 4.52 in. (36.5 x 16.5 x 11.5 cm) approx.

Set of 12 works

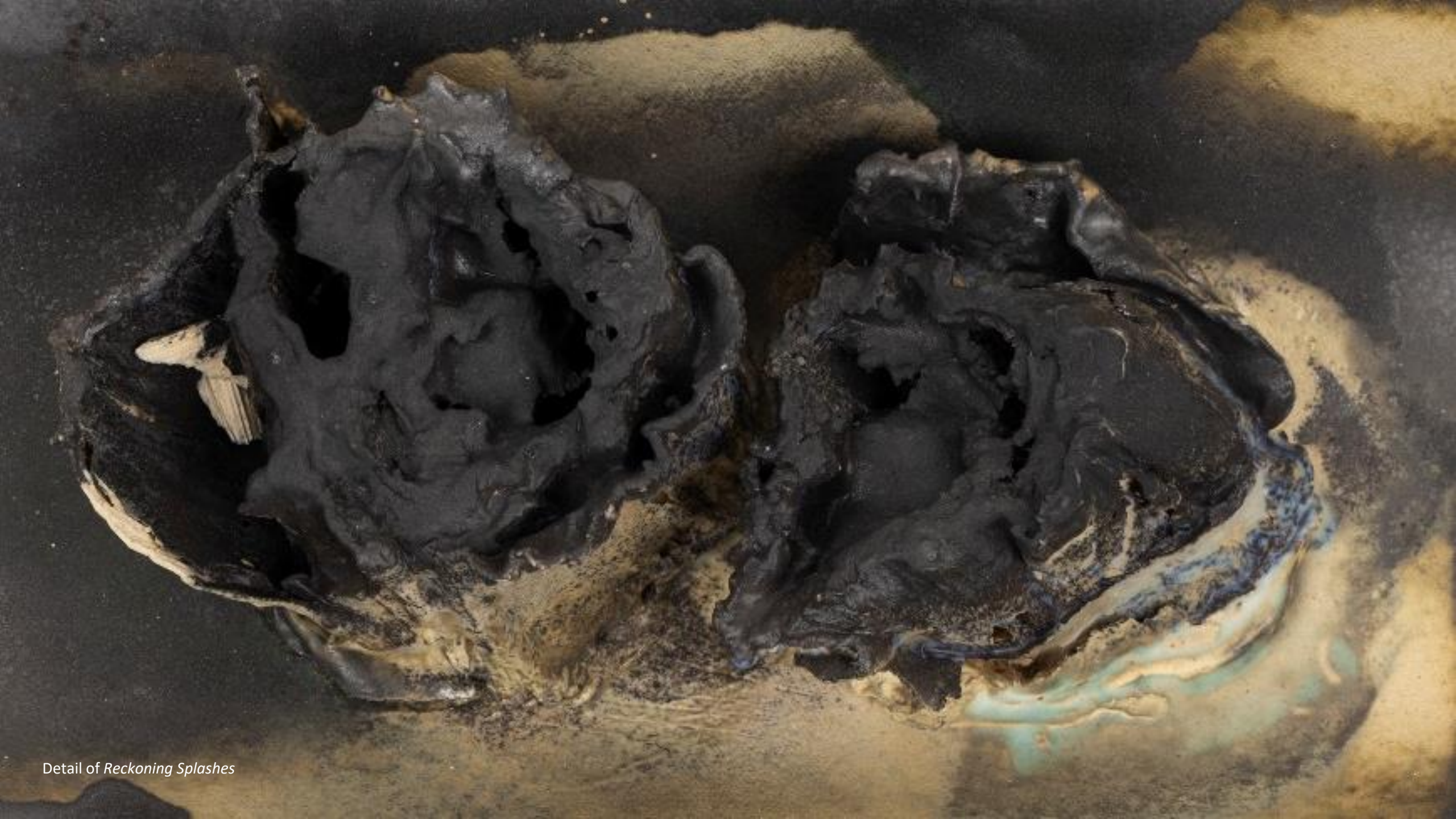
2023, Shantiniketan

7.92 kg. approx.

Unsigned



AB2470



Detail of *Reckoning Splashes*

Sibaprasad Karchaudhuri (b.1944)

The Gateway

Acrylic on canvas

41.92 x 42.04 in. (106.5 × 106.8 cm.)

2024, Santiniketan

Signed and dated in English and Bengali (lower left and right)

AB3083



Sibaprasad Karchaudhuri (b.1944)

Untitled

Acrylic on canvas

41.92 x 41.92 in. (106.5 × 106.5 cm.)

2023, Santiniketan

Signed and dated in English and Bengali (lower left and right)

AB3082



Sibaprasad Karchaudhuri (b.1944)

The Sun & Moon

Acrylic on canvas

41.92 x 41.92 in. (106.5 × 106.5 cm.)

2023, Santiniketan

Signed and dated in English and Bengali (lower left and right)

AB3084



Sibaprasad Karchaudhuri (b.1944)

The Dream of An Idiot - 1

Acrylic on canvas

60 x 42 in. (152.4 x 106.6 cm.) each

60 x 84 in. (152.4 x 213.3 cm.) overall

Diptych

2009, Santiniketan

Signed in Bengali and English (lower right and left)

AB1588



Sibaprasad Karchaudhuri (b.1944)

Untitled

Acrylic on canvas

42 x 48 in. (106.6 x 121.9 cm.)

2008, Santiniketan

Signed in Bengali and English (lower right and left)

AB1591



Sibaprasad Karchaudhuri (b.1944)

Untitled

Acrylic on canvas

39 x 39 in. (91.4 x 91.4 cm.)

2007, Santiniketan

Signed in Bengali and English (lower right and left)

AB1593



Sibaprasad Karchaudhuri (b.1944)

Untitled

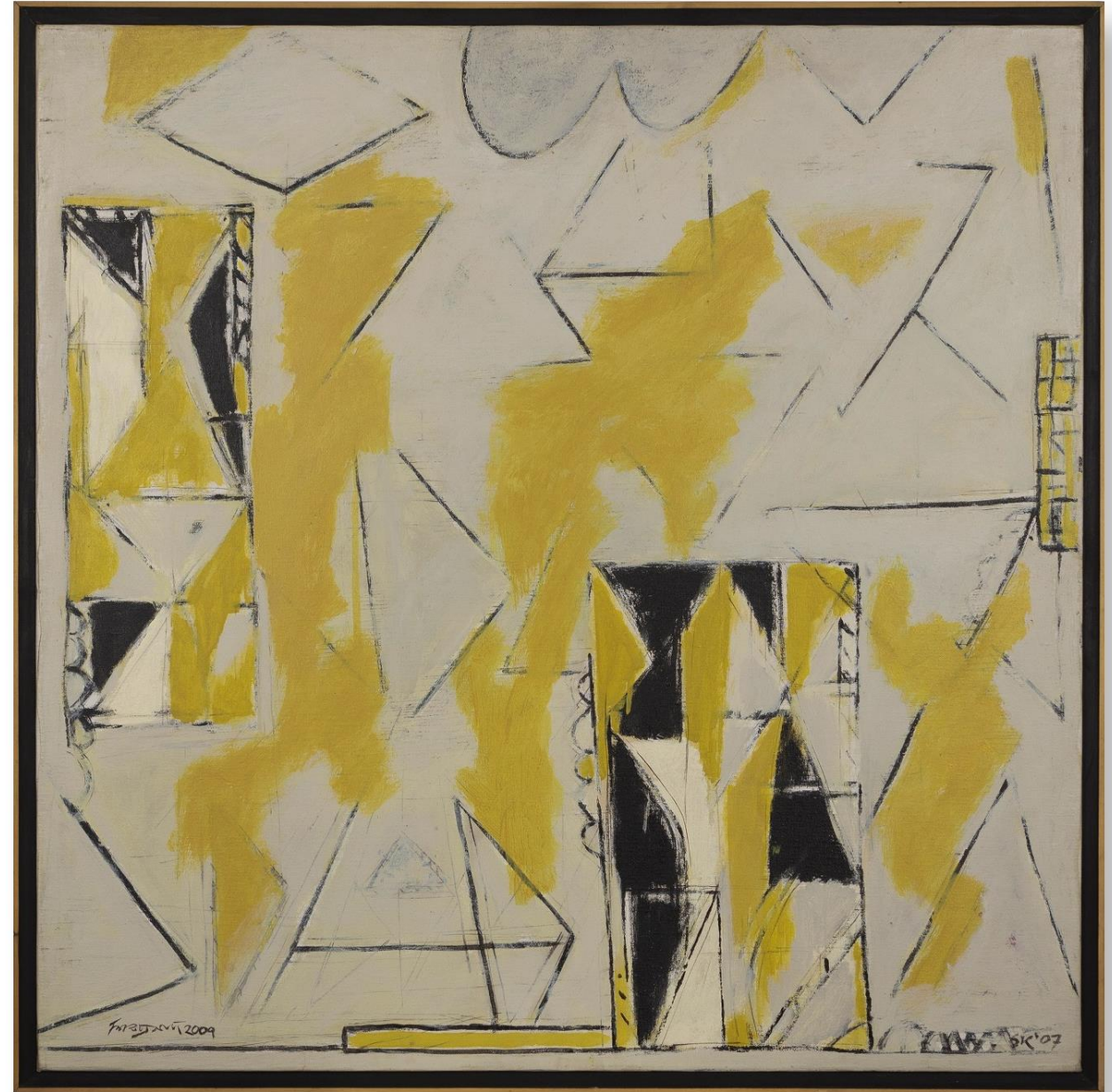
Acrylic on canvas

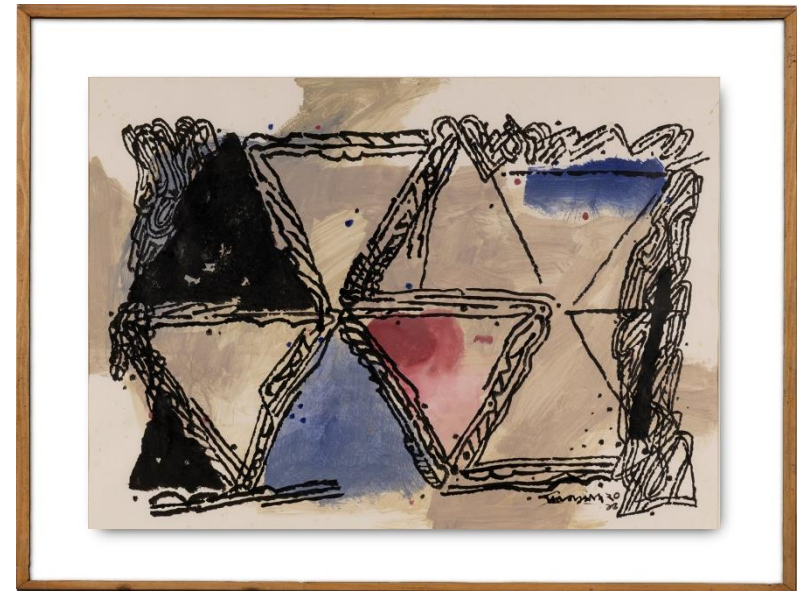
40 x 40 in. (101.6 x 101.6 cm.)

2007, Santiniketan

Signed in Bengali and English (lower left and right)

AB1595





Sibaprasad Karchaudhuri (b.1944)

Untitled

Acrylic on paper

21.5 x 29.5 in. (54.6 x 74.9 cm.) each

2011 - 2015

Signed in Bengali and English

AB1626, AB1627, AB1621, AB683



Sibaprasad Karchaudhuri (b.1944)

Untitled

Acrylic on canvas

12 x 12 in. (30.4 x 30.4 cm.) each

Set of 3 works

2014 - 2015, Santiniketan

Signed in Bengali and English (lower right, top, bottom and lower left)

AB1597, AB1598, AB1606

Soma Das (b.1979)

Kaj Kori Anonde (Work with Pleasure)
Gouache on Nepalese paper pasted on printed cloth and canvas
48.42 x 31.88 in. (123 x 81 cm.)
2024, Kolkata
Signed and dated in English (lower right)

AB3057



Soma Das (b.1979)

Home Sweet Home

Gouache on Nepalese paper pasted on canvas

24.40 x 29.84 in. (62 x 75.8 cm.)

2024, Kolkata

Signed and dated in English (lower right)

AB3004



Soma Das (b.1979)

Sandhyonusthan (The Evening Ritual)
Gouache on Nepalese paper pasted on canvas
48.2 x 31.8 in. (122.5 x 81 cm.)
2024, Kolkata
Signed in English (lower right)

AB2428



Soma Das (b.1979)

Dui Protibeshi (Two Neighbours)

Gouache on Nepalese paper pasted on canvas

29.3 x 23.2 in. (74.5 x 59 cm.)

2023, Kolkata

Signed in English (lower right)

AB2427





Soma Das (b.1979)

Meye-Bela
Gouache and clay on Nepalese paper pasted on board
Overall dimension variable
A- 11.73 x 8.81 in. (29.8 x 22.4 cm.)
B- 7.08 x 7.08 in. (18 x 18 cm.)
C- 10.43 x 7.91 in. (26.5 x 20.1 cm.)
D- 10.43 x 7.91 in (26.5 x 20.1 cm.)
E- 11.61 x 9.76 in. (29.5 x 24.8 cm.)
Set of 5 works
2024, Kolkata
Signed and dated in English (lower right)



Soma Das (b.1979)

Valo Lagar Kaj - 2 (Series Valo Lagar Kaj)

Gouache on Nepalese paper pasted on printed cloth and board

Overall dimension variable

A - 14.96 x 11.81 in. (38 x 30 cm.)

B - 12.08 x 7.63 in. (30.7 x 19.4 cm.)

C - 14.48 x 10.82 in. (36.8 x 27.5 cm.)

D - 14.56 x 10.62 in. (37 x 27 cm.)

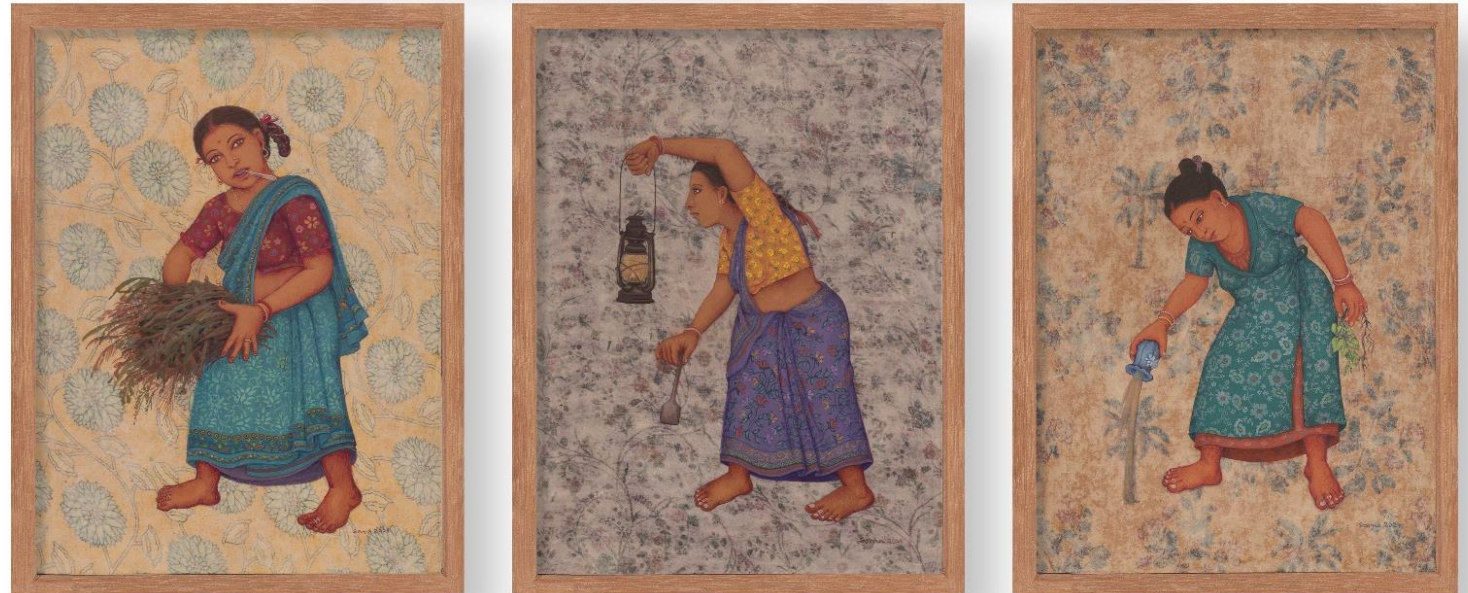
E - 15.35 x 11.25 in. (39 x 28.6 cm.)

Set of 5 works

2024, Kolkata

Signed and dated in English (lower right)

AB3006



Soma Das (b.1979)

Valo Lagar Kaj - 1 (Series Valo Lagar Kaj)

Gouache on Nepalese paper pasted on print cloth and board

Overall dimension variable

A - 10.51 x 13.22 in. (26.7 x 33.6 cm.)

B - 10.82 x 8.85 in. (27.5 x 22.5 cm.)

C - 10.23 x 8.26 in. (26 x 21 cm.)

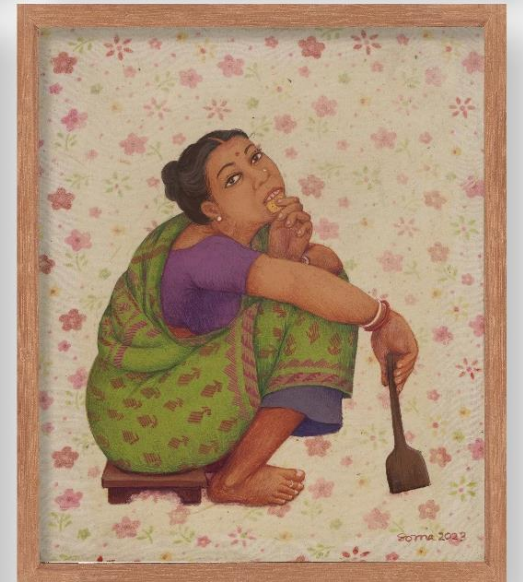
D - 10.62 x 8.89 in. (27 x 22.6 cm.)

Set of 4 works

2023, Kolkata

Signed and dated in English (lower right)

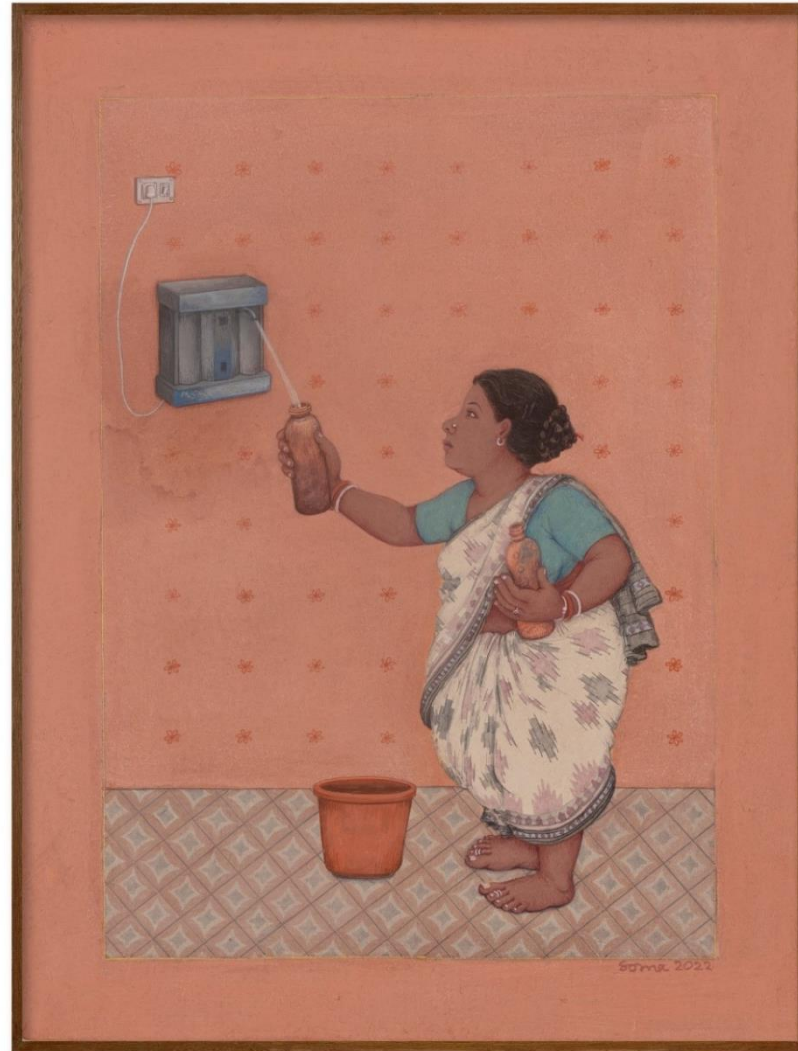
AB3007



Soma Das (b.1979)

A Busy Life I & II
Gouache on Nepalese paper pasted on canvas
A - 17 x 12.8 in. (43 x 32.5 cm)
B - 16.8 x 13 in. (42.5 x 33 cm.)
2021 - 2022, Kolkata
Signed in English (lower right)

AB2425, AB2426





Soma Das (b.1979)

Untitled 1

Gouache on Nepalese paper and printed fabric on paper

A - 11 x 8 in. (27 x 19.5 cm.)

B - 9 x 11 in. (22.5 x 27 cm.)

C - 13 x 10 in. (33 x 25.5 cm.)

Set of 3 works

2021 - 2022, Kolkata

Signed in English (on the recto)

AB1839

Soma Das (b.1979)

Untitled 5

Gouache, ink, tea stain, colour pencil on Nepalese paper pasted on printed paper, paper and board

82 x 38 in. (208.3 x 96.5 cm.) overall approx

A - 7.5 x 4 in. (19 x 9.5 cm.)

B - 11 x 7.3 in. (27.5 x 18.5 cm.)

C - 9.5 x 7 in. (24 x 18.5 cm.)

D - 12 x 8 in. (29.5 x 19.5 cm.)

E - 9 x 9 in. (22 x 22 cm.)

F - 7.5 x 6.5 in. (19 x 17 cm.)

G - 8 x 7 in. (20.5 x 18 cm.)

H - 9.5 x 9 in. (24.5 x 23.5 cm.)

I - 11 x 8 in. (27 x 20.5 cm.)

J - 8 x 8 in. (20 x 19.5 cm.)

K - 9 x 11 in. (22.5 x 28 cm.)

L - 8 x 7 in. (20.5 x 17.5 cm.)

M - 8.5 x 6.5 in. (21.5 x 16.5 cm.)

N - 9 x 3 in. (23 x 8.5 cm.)

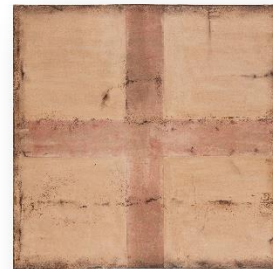
Set of 14 works

2015 - 2019, Kolkata

Signed in English (on the recto)

AB1843





Suman Dey (b.1981)

Decay

Acrylic, charcoal, and graphite on Lokta paper pasted on canvas

Overall dimension variable

A - 60 in. (152.7 cm.) dia.

B - 18 x 18 in. (45.9 x 45.8 cm.)

Set of 2 works

2024, Kolkata

Signed in English (on the reverse)

AB2822

Suman Dey (b.1981)

Untitled

Acrylic, charcoal, and graphite on Lokta handmade paper pasted on board

30 X 30. in. (76.3 x 76.5 cm.)

2024, Kolkata

Signed in English (on the reverse)

AB2820



Suman Dey (b.1981)

Untitled

Acrylic, charcoal, and graphite on Lokta handmade paper pasted on board

30 x 30 in. (76.5 x 76.4 cm.)

2024, Kolkata

Signed in English (on the reverse)

AB2821



Suman Dey

Untitled

Acrylic, charcoal, and graphite on Lokta paper pasted on board

19.8 x 20 in. (50.3 x 50.7 cm.)

2024, Kolkata

Signed in English (on the reverse)

AB2824



Suman Dey

Untitled

Acrylic, charcoal, and graphite on Lokta paper pasted on board
15 x 24 in. (38.2 x 60.8 cm.)

2024, Kolkata

Signed in English (on the reverse)

AB2825



Suman Dey

Untitled

Acrylic, charcoal, and graphite on paper

12.5 x 22 in. (31.5 x 56 cm.)

2024, Kolkata

Signed in English (on the reverse)

AB2823



Suman Dey (b.1981)

Form II

Acrylic, charcoal and graphite on paper

22 x 26.8 in. (55.8 x 68 cm.)

2023, Kolkata

Signed in English (on the reverse)

AB2313



Tapas Biswas (b. 1972)

Pretty in Wood (Series Flower)

Wood and Brass

32.08 x 38.77 x 37.20 in. (81.5 x 98.5 x 94.5 cm.) approx.

2024, Kolkata

35.320 kg.

Unsigned

AB3439



Verso



Recto

Ujjal Dey (b.1992)

Offering to Surya II (Series Offering to Surya)
Myrobalan, kalamkari ink, lime resist, alum,
turmeric, and madder on cotton cloth
91.3 x 47.24 in. (232 x 120 cm.)
2024, Santiniketan
Unsigned

AB2894



Ujjal Dey (b.1992)

Offering to Surya III (Series Offering to Surya)
Myrobalan, kalamkari ink, wax and lime resist,
alum, madder and catechu on cotton cloth
82.67 x 46.06 in. (210 x 117 cm.)
2024, Santiniketan
Unsigned

AB2895





Ujjal Dey (b.1992)

Material Memory I (Series Material Memory)

Myrobalan, kalamkari ink, wax, lime resist,

alum, and indigo on khadi cotton cloth

49.21 x 35.03 in. (125 x 89 cm.)

2024, Santiniketan

Unsigned

AB2892



Ujjal Dey (b.1992)

Material Memory II (Series Material Memory)

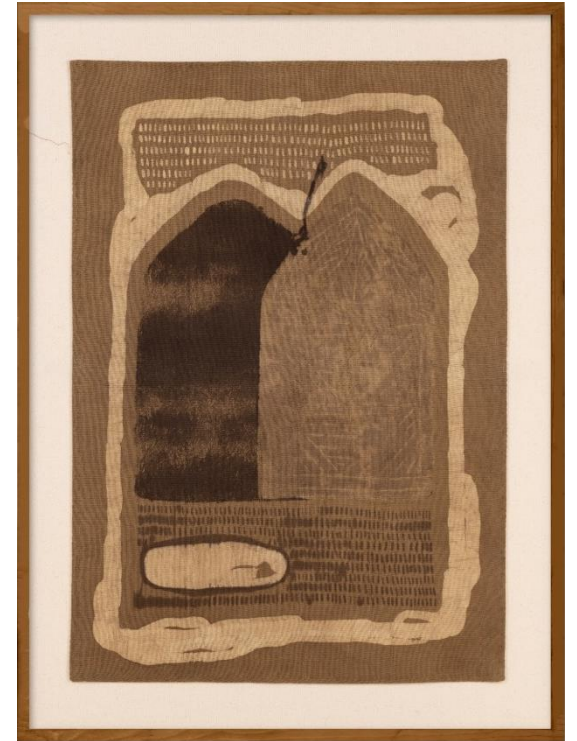
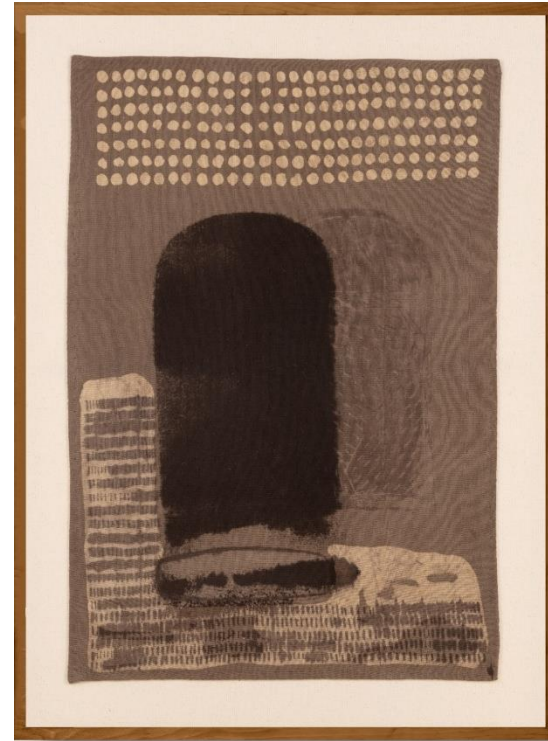
Myrobalan, kalamkari ink, wax, resist on khadi cotton cloth

44.48 x 35.03 in. (113 x 89 cm.)

2024, Santiniketan

Unsigned

AB2893



Ujjal Dey (b.1992)

Mother and Child I - IV (Series Mother and Child)

Myrobalan, kalamkari ink, wax-resistant, turmeric, neem, onion

skin, marigold and aluminium on khadi cotton cloth

28 x 19.5 in. (71.12 x 49.53 cm.) each

2024, Santiniketan

Unsigned

AB2885, AB2886, AB2887, AB2888

UJJAL DEY (b.1992)

Lepa - 4

Kalamkari ink, mud resist, catechu, myrobalan, natural
dyed with indigo on acid-free paper
16.5 x 11.6 in. (42 x 29.5 cm.) each

Set of 12 works

2020, Santiniketan

Unsigned

AB680



Francis Newton Souza (1924 - 2002)

Untitled

Graphite on paper

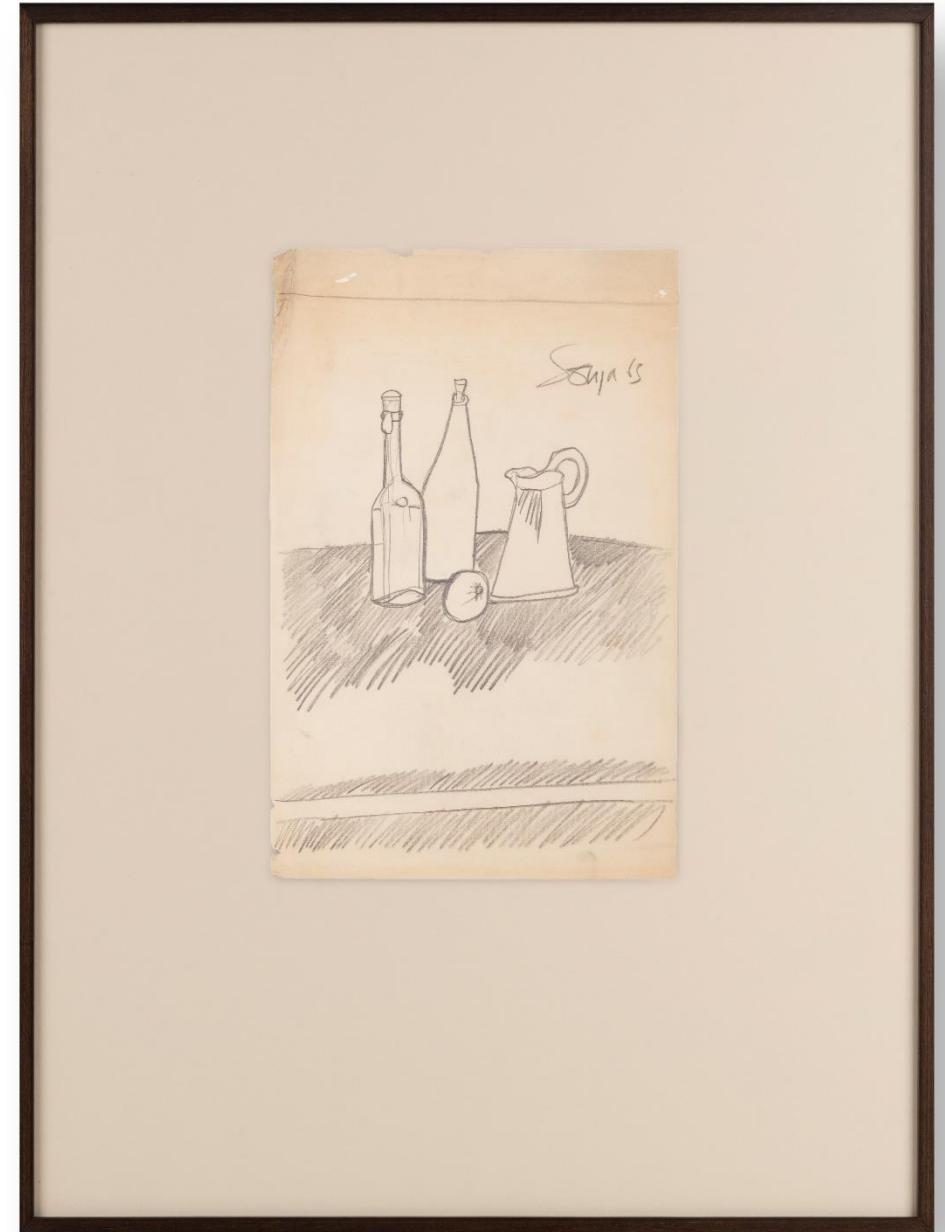
17 x 10.8 in. (43 x 27.5 cm.)

1963

Signed in English (upper right)

Signed and dated "Souza 63"

AB2007



Francis Newton Souza (1924 - 2002)

Untitled

Felt tip pen and chemical alteration on magazine paper

12 x 9.8 in. (30.5 x 25 cm.)

1991

Signed in English (upper left)

Signed and dated "Souza 91"

A138



Francis Newton Souza (1924 - 2002)

Untitled

Felt tip pen on printed paper

10.6 x 7.5 in. (27 x 19 cm.)

1992

Signed in English (upper left)

Signed and dated "Souza 92"

AB2143



Francis Newton Souza (1924 - 2002)

Untitled

Felt tip pen and chemical alteration on magazine paper

10.8 x 8.1 in. (27.5 x 20.5 cm.)

1993

Signed in English (upper middle)

Signed and dated "Souza 1993"

AB2151



Kartick Chandra Pyne (b. 1931 – d. 2017)

Aerial Skill

Oil on canvas

36 x 30 in. (91.4 x 76.2 cm.)

2006

Signed in Bengali (lower right)

C2061



Kartick Chandra Pyne (b. 1931 – d. 2017)

Rejoice in Nature

Oil on canvas

36 x 30 in. (91.4 x 76.2cm.)

Undated

Signed in Bengali (lower right)

C2065



Kartick Chandra Pyne (b. 1931 – d. 2017)

Harassed in nature

Oil on canvas

36 x 30 in. (91.4 x 76.2 cm.)

2006

Signed in Bengali (lower right)

C2063



Kartick Chandra Pyne (b. 1931 – d. 2017)

The Autumn

Oil on canvas

36 x 30 in. (91.4 x 76.2 cm.)

2007

Signed in Bengali (lower right)

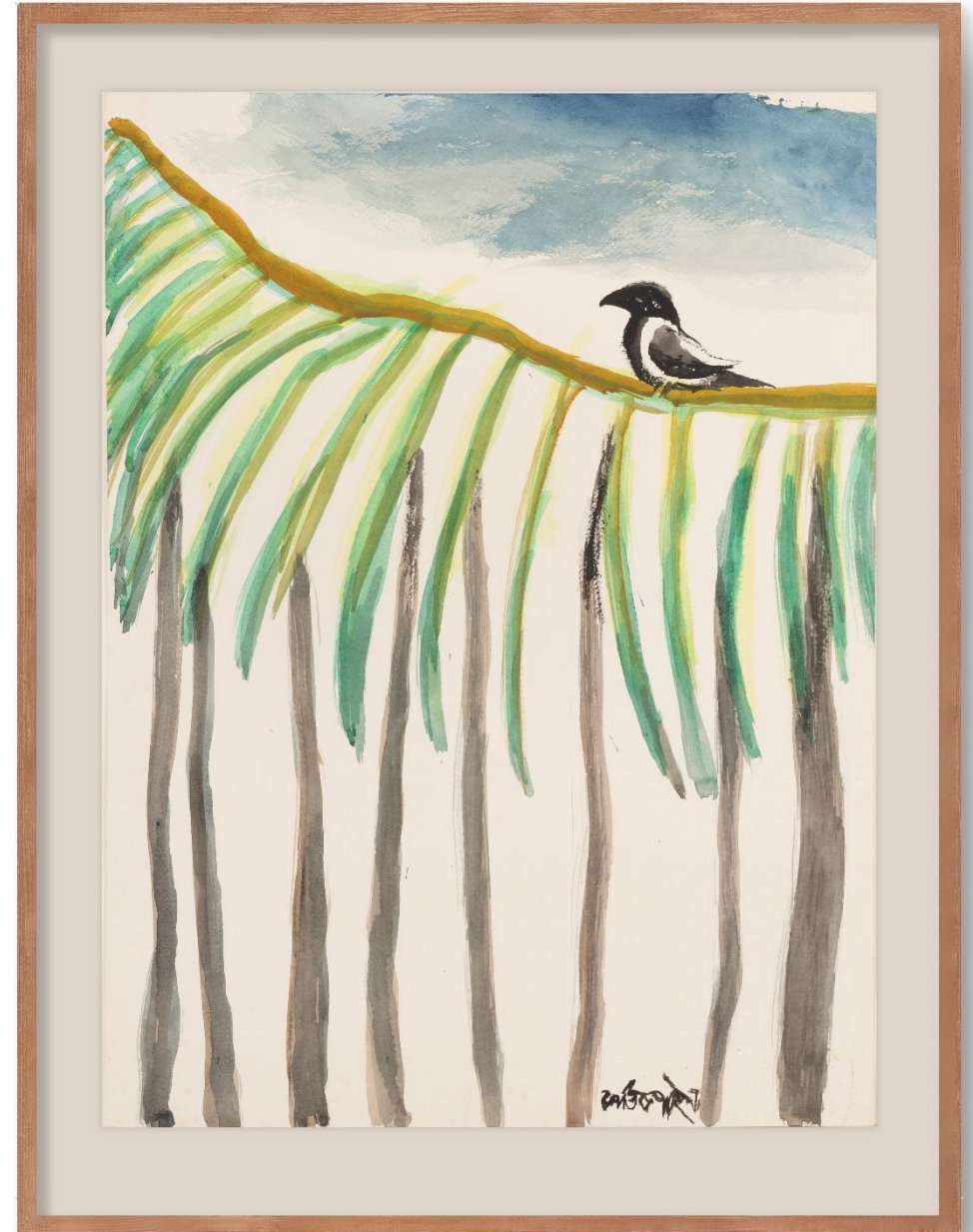
C2064



Kartick Chandra Pyne (b. 1931 – d. 2017)

Untitled
Watercolour on paper
24.01 x 17.91 in. (61 x 45.5 cm.)
Undated
Signed in Bengali (lower right)

C2022



Kartick Chandra Pyne (b. 1931 – d. 2017)

Untitled
Watercolour on paper
21.85 x 14.96 in. (55.5 x 38 cm.)
Undated
Signed in Bengali (lower right)

C2023



Kartick Chandra Pyne (b. 1931 – d. 2017)

Untitled
Watercolour on paper
22.04 x 14.96 in. (56 x 38 cm.)
Undated
Signed in Bengali (lower right)

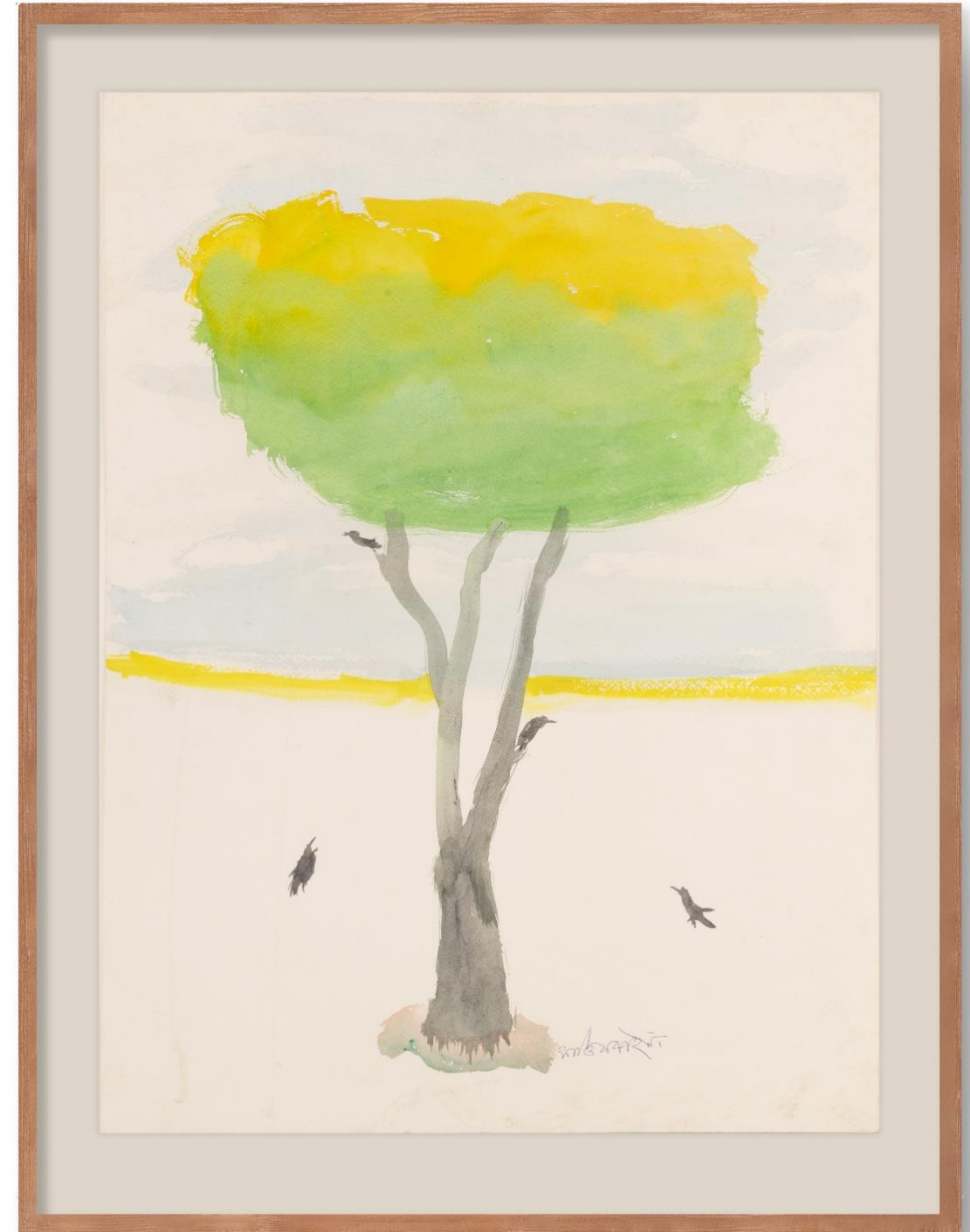
C2032



Kartick Chandra Pyne (b. 1931 – d. 2017)

Untitled
Watercolour on paper
24.01 x 17.91 in. (61 x 45.5 cm.)
Undated
Signed in Bengali (lower right)

C2010



Kartick Chandra Pyne (b. 1931 – d. 2017)

Untitled
Watercolour on rice paper
13.5 x 17 in. (34.29 x 43.18 cm.)
Undated
Signed in Bengali (lower left)

C2048



Kartick Chandra Pyne (b. 1931 – d. 2017)

Untitled

Watercolour on rice paper

14 x 16 in. (35.56 x 40.64 cm.)

Undated

Signed in Bengali (lower left)

C2050



K G Subramanyan (b.1924 - d.2016)

Visitor

Acrylic on canvas

29.5 x 29.5 in. (74.9 x 74.9 cm.)

2007

Signed in Malayalam (lower right)

C1854



K G Subramanyan (b.1924 - d.2016)

Cats and Humans

Acrylic on canvas

29.5 x 29.5 in. (74.9 x 74.9 cm.)

2007

Signed in Malayalam (lower left)

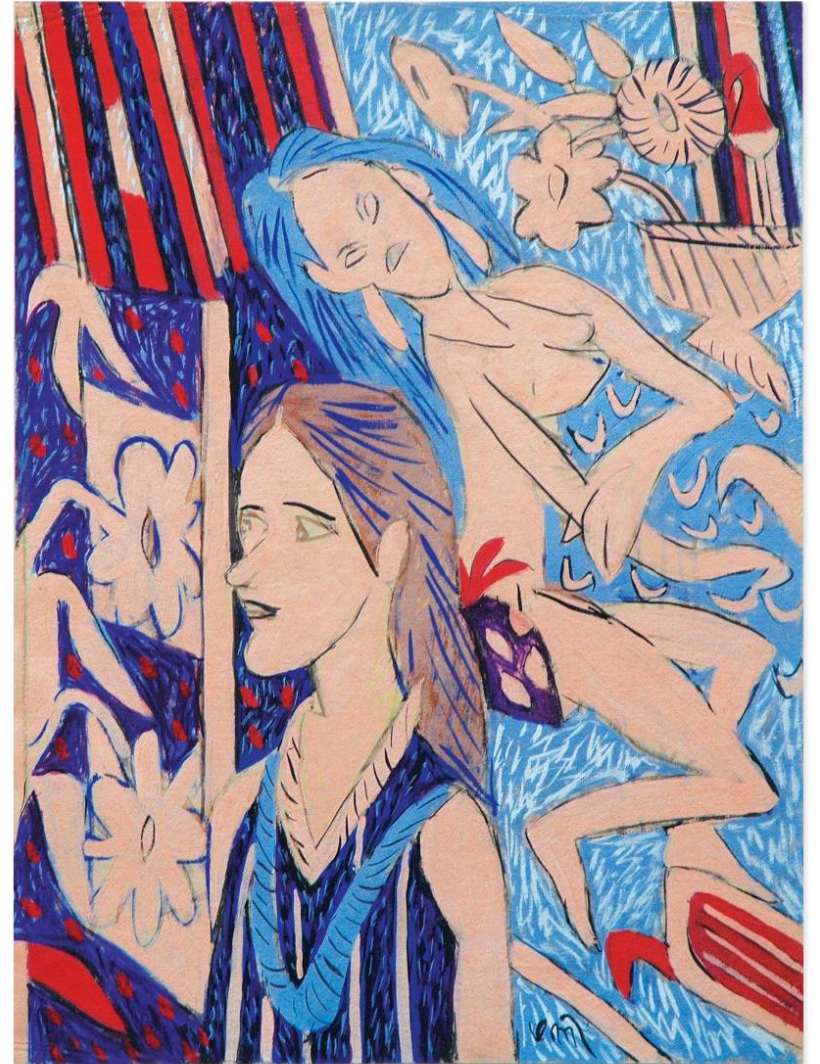
C1857



K G Subramanyan (b.1924 - d.2016)

Figure Against Tapestry
Gouache on handmade paper
30 x 22.5 in. (76.2 x 57 cm.)
2008
Signed in Tamil (lower right)

AB2673



K G Subramanyan (b.1924 - d.2016)

Figure and Faces

Gouache on handmade paper

31 x 22.5 in. (78.7 x 57 cm.)

2008

Signed in Tamil (lower Left)

AB2674



K G Subramanyan (b.1924 - d.2016)

Untitled

Pen, ink and Watercolour on paper
7 x 13 in. (18.5 x 32.5 cm.)

1953

Signed in Tamil (lower right)

A42



K G Subramanyan (b.1924 - d.2016)

Marathi Fishwala 1

Pen, ink and Watercolour on paper

13 x 8 in. (32.5 x 20 cm.)

1953

Signed in Tamil (lower right)

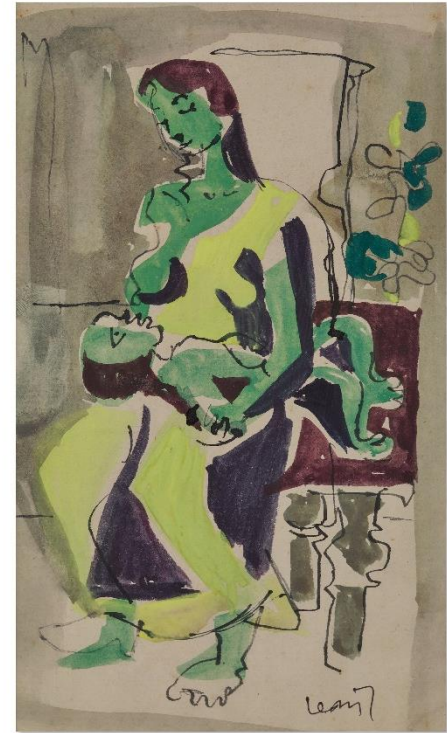
A43



K G Subramanyan (b.1924 - d.2016)

Untitled
Pen and Watercolour on paper
7 x 4 in. (17.7 x 10.5 cm.)
1953
Signed in Tamil (lower right)

A46



K G Subramanyan (b.1924 - d.2016)

Untitled
Watercolour on paper
8 x 7 in. (20.3 x 18 cm.)
1958
Signed in Tamil (lower right)

A45



K G Subramanyan (b.1924 - d.2016)

Untitled
Watercolour on paper
12 X 7 in. (30.2 x 18 cm.)
1979
Unsigned

A63



K G Subramanyan (b.1924 - d.2016)

Untitled
Gouache on paper
10.5 x 7.25 in. (26.6 x 18.4 cm.)
Undated
Signed in Tamil (lower left)

AB2681



K G Subramanyan (b.1924 - d.2016)

Untitled
Watercolour on paper
9 x 10 in. (22.5 x 24.5 cm.)
1994
Unsigned

A72



K G Subramanyan (b.1924 - d.2016)

Untitled
Watercolour on paper
10 x 9 in. (25 x 22.5 cm.)
2005
Undated
Unsigned

A89



K G Subramanyan (b.1924 - d.2016)

Untitled

Gouache on paper

14.96 X 11.02 inches

2007

Signed in Tamil and English (lower left and verso)

C2206



K G Subramanyan (b.1924 - d.2016)

Untitled
Crayon and Watercolour on paper
11 x 7.6 in. (28 x 19.5 cm.)
2007
Signed in Tamil (lower right)

A92



K G Subramanyan (b.1924 - d.2016)

Untitled
Ink on paper
11.5 x 14 in. (29.2 x 35.5 cm.)
Undated
Unsigned

AB2679



Lalit Mohan Sen (b.1898 - d.1954)

Untitled (Old village man smoking cigarettes)

Unique gelatin silver print

14.9 x 12 in. (38 x 30.5 cm.)

c.1940s - 1950s

Unsigned

AB3301



Lalit Mohan Sen (b.1898 - d.1954)

Untitled (Indigenous Smiling Woman)

Unique gelatin silver print

11.9 x 10 in. (30.3 x 25.4 cm.)

c.1940s - 1950s

Unsigned

AB3145



Lalit Mohan Sen (b.1898 - d.1954)

Untitled (Portrait of an Old Man)

Unique gelatin silver print

11.9 x 10 in. (30.4 x 25.5 cm.)

c.1940s - 1950s

Unsigned

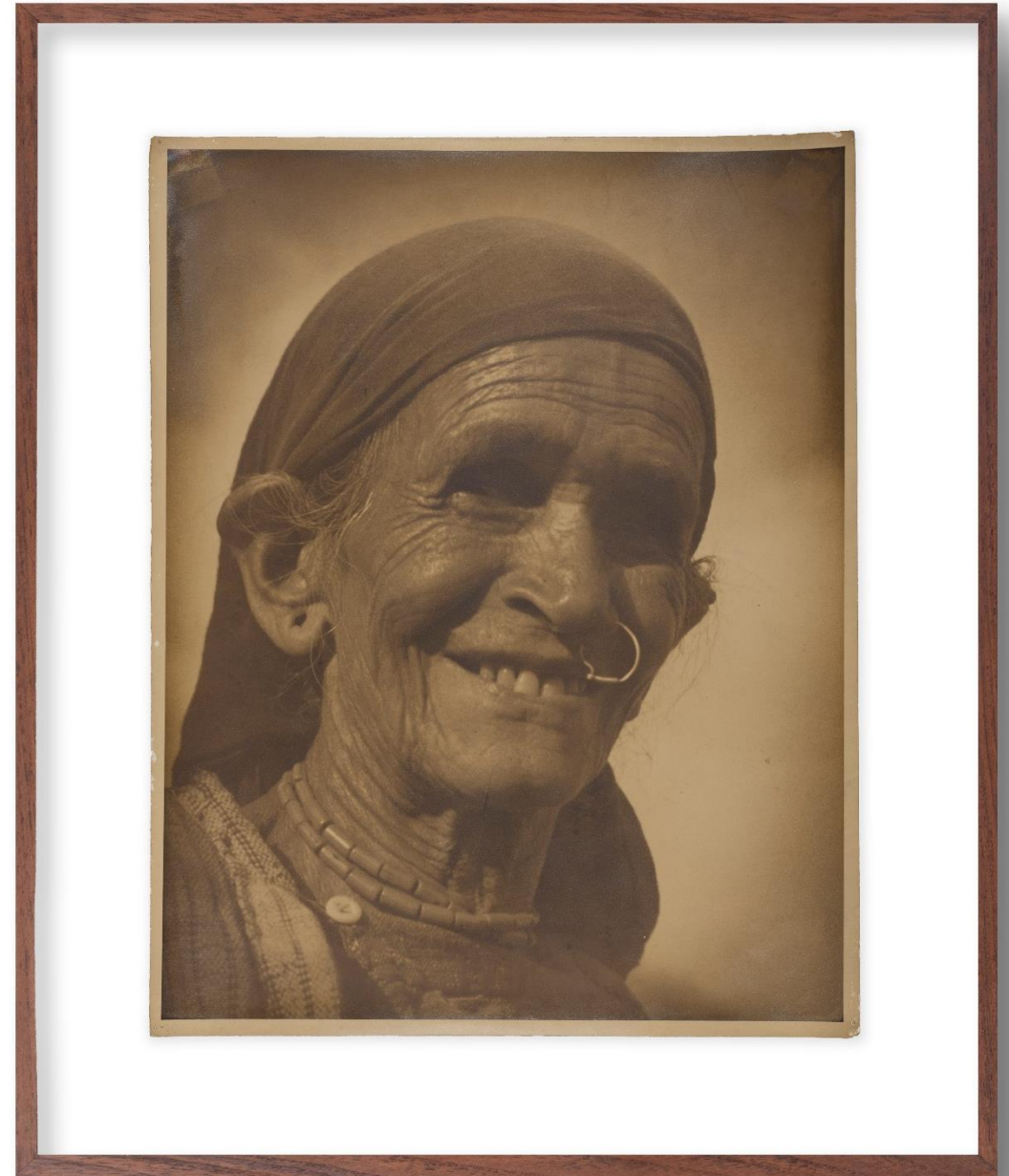
AB3154



Lalit Mohan Sen (b.1898 - d.1954)

Old But Young
Unique gelatin silver print
14.9 x 11.9 in. (38 x 30.4 cm.)
c.1940s - 1950s
Unsigned

AB3161



Lalit Mohan Sen ((b.1898 - d.1954)

Untitled (Indigenous woman holding a cigarette in hand)

Unique gelatin silver print

11.9 x 10 in. (30.4 x 25.4 cm.)

c.1940s - 1950s

Unsigned

AB3186



Lalit Mohan Sen ((b.1898 - d.1954)

Untitled (Portrait of a Hill Woman)

Unique gelatin silver print

12 x 10 in. (30.5 x 25.4 cm.)

c.1940s - 1950s

Unsigned

AB3199



Lalit Mohan Sen (b.1898 - d.1954)

Untitled (Woman and Child)
Unique gelatin silver print
11.9 x 9.9 in. (30.4 x 25.3 cm.)
c.1940s - 1950s
Unsigned

AB3203



Lalit Mohan Sen (b.1898 - d.1954)

Tharu Girl

Unique gelatin silver print

9.8 x 7.8 in. (24.9 x 19.9 cm.)

c.1940s - 1950s

Unsigned

AB3220



Lalit Mohan Sen (b.1898 - d.1954)

Untitled (Portrait of a Man)
Unique gelatin silver print
11.9 x 10 in. (30.4 x 25.4 cm.)
c.1940s - 1950s
Unsigned

AB3233



Lalit Mohan Sen (b.1898 - d.1954)

Untitled (Face of a Woman in Dark)

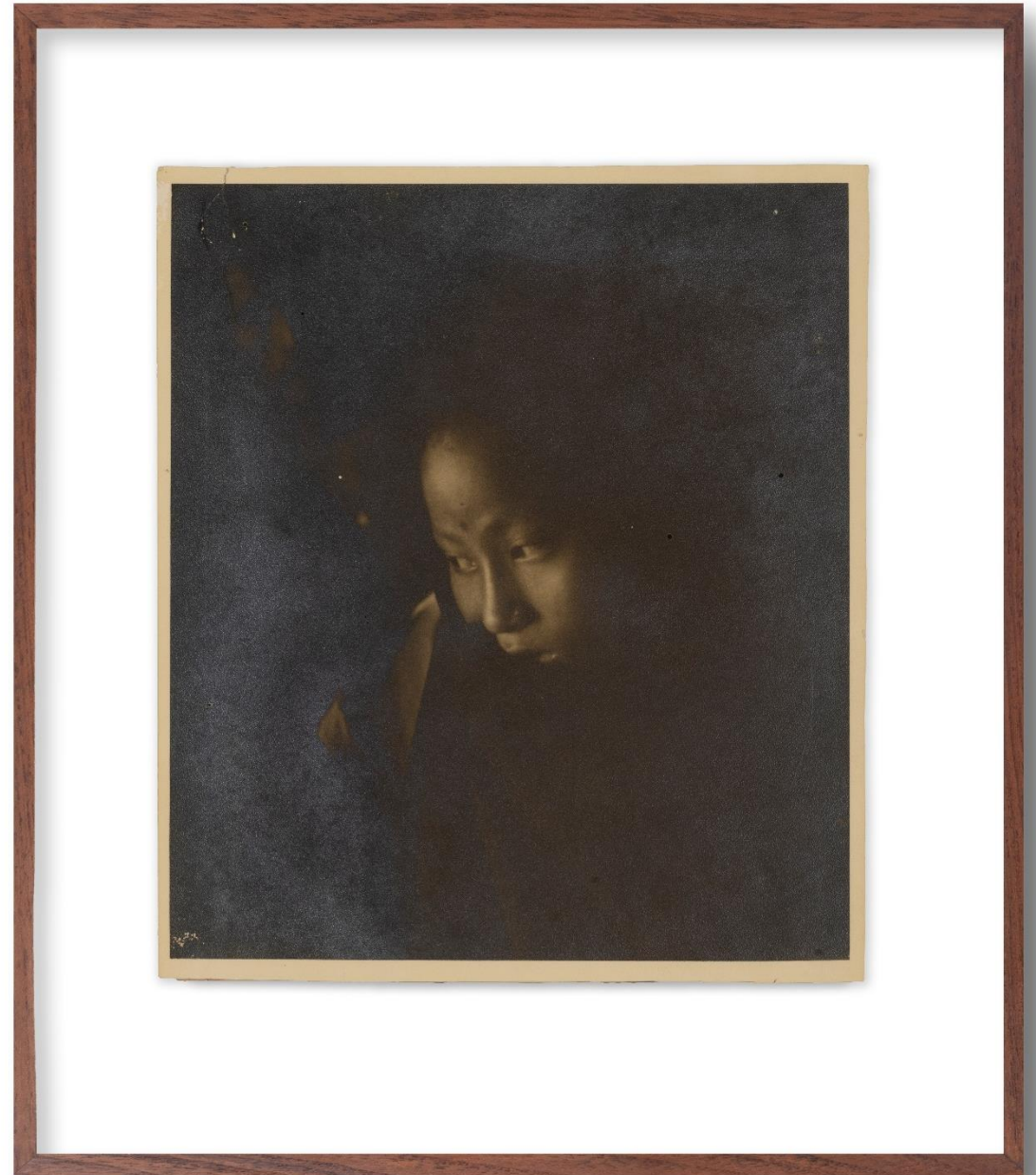
Unique gelatin silver print

9.1 x 7.9 in. (23.3 x 20.1 cm.)

c.1940s - 1950s

Unsigned

AB3251



Lalit Mohan Sen (b.1898 - d.1954)

Untitled (Indigenous Woman)
Unique gelatin silver print
9.9 x 11.9 in. (25.3 x 30.3 cm.)
c.1940s - 1950s
Unsigned

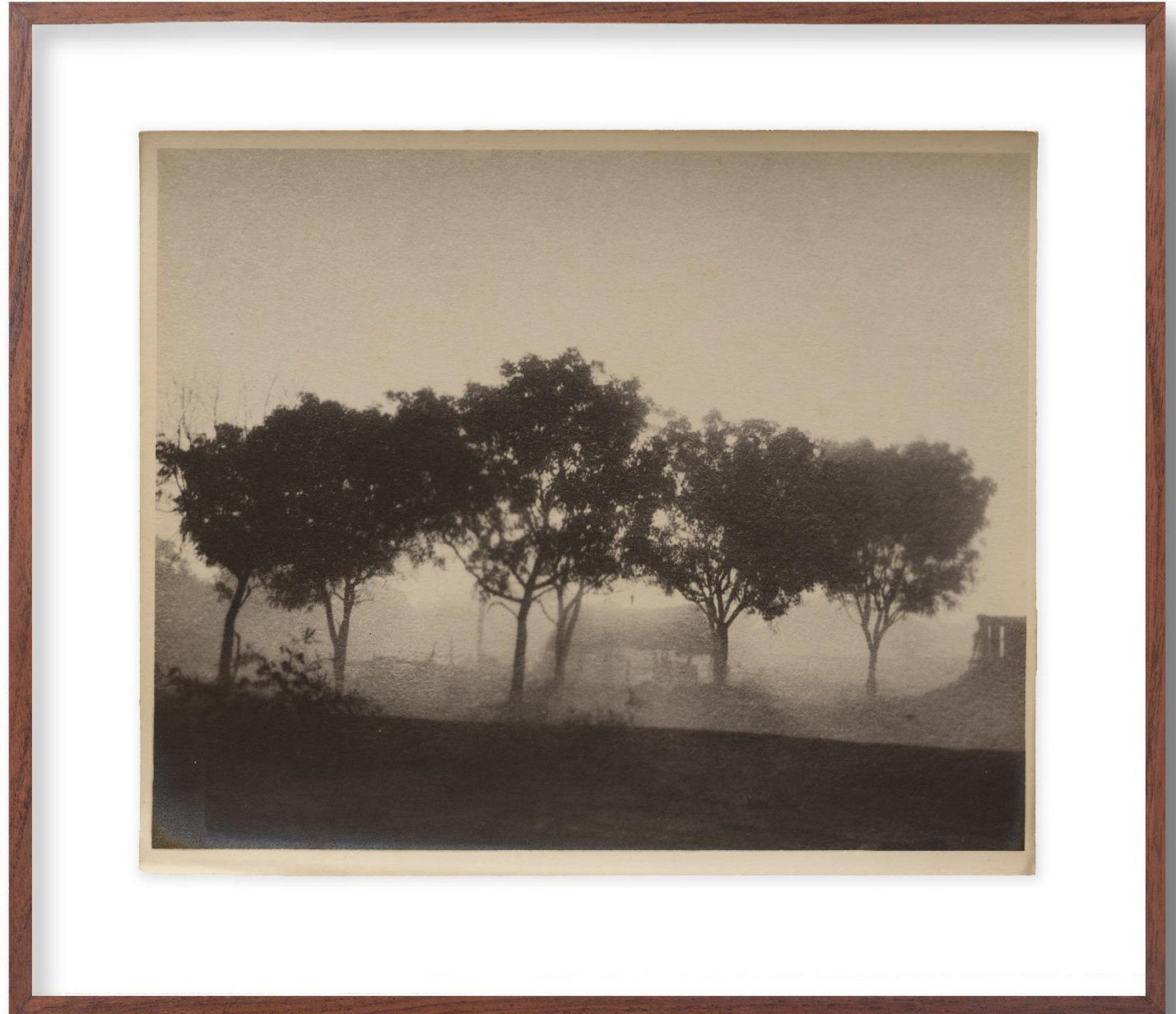
AB3319



Lalit Mohan Sen (b.1898 - d.1954)

Untitled (Landscape)
Unique gelatin silver print
10 x 11.9 in. (25.5 x 30.4 cm.)
c.1940s - 1950s
Unsigned

AB3343



Lalit Mohan Sen (b.1898 - d.1954)

Untitled (Two village women walking through the meadow)

Unique gelatin silver print

11.9 x 10 in. (30.4 x 25.4 cm.)

c.1940s - 1950s

Unsigned

AB3344



Lalit Mohan Sen (b.1898 - d.1954)

Untitled (Placid Landscape)
Unique gelatin silver print
10 x 11.9 in. (25.4 x 30.3 cm.)
c.1940s - 1950s
Unsigned

AB3345



Lalit Mohan Sen (b.1898 - d.1954)

Untitled (Hillscape)
Unique gelatin silver print
10.9 x 13.8 in. (27.9 x 35.3 cm.)
c.1940s - 1950s
Unsigned

AB3346



Lalit Mohan Sen (b.1898 - d.1954)

Untitled (Twilight)

Unique gelatin silver print

9.3 x 11.5 in. (23.7 x 29.3 cm.)

c.1940s - 1950s

Unsigned

AB3347



Lalit Mohan Sen (b.1898 - d.1954)

Untitled

Unique gelatin silver print (Bromoile)

9.9 x 11.9 in. (25.2 x 30.3 cm.)

c.1940s - 1950s

Unsigned

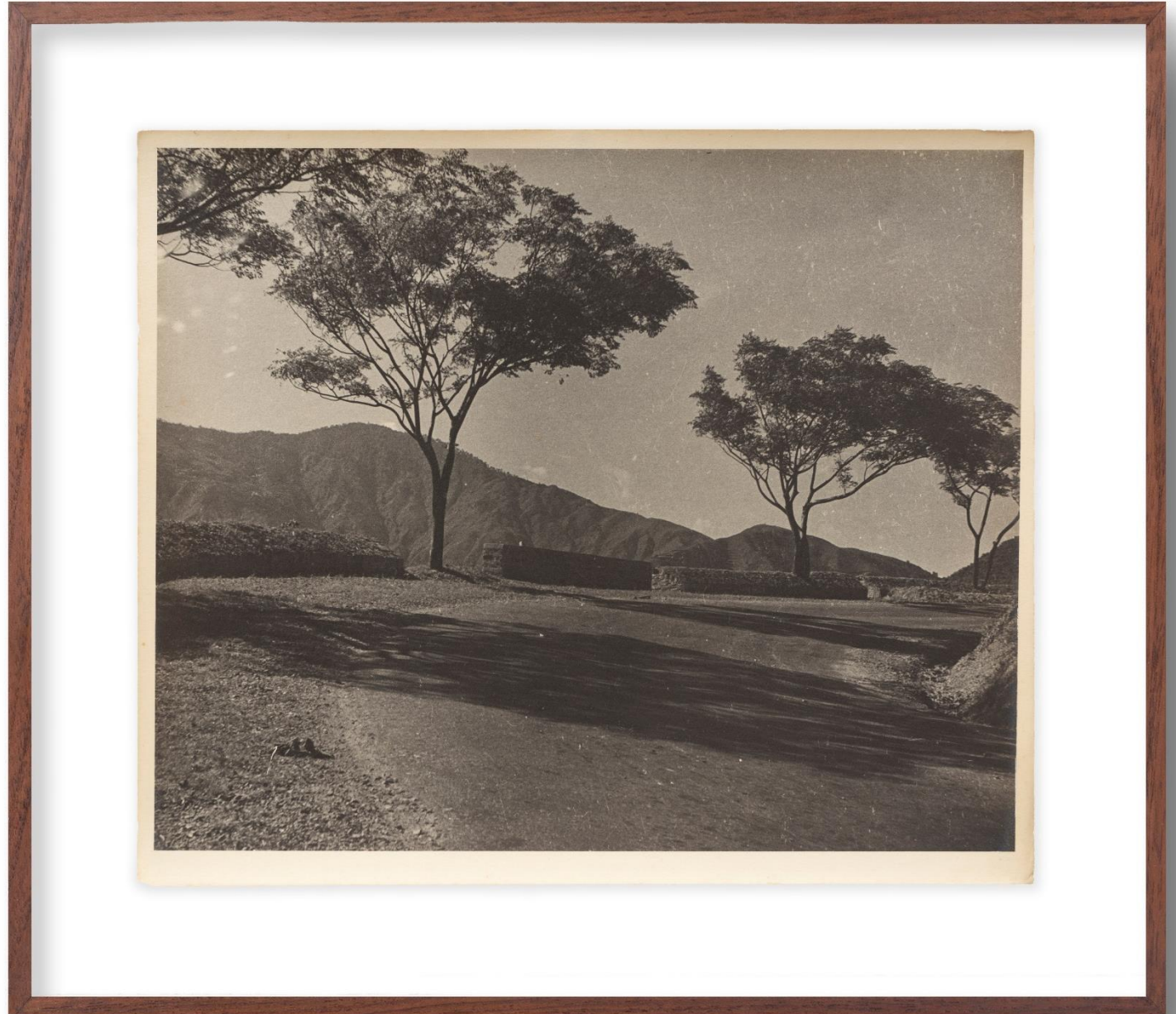
AB3348



Lalit Mohan Sen (b.1898 - d.1954)

Untitled (Mountain Road)
Unique gelatin silver print
9.9 x 11.9 in. (25.2 x 30.4 cm.)
c.1940s - 1950s
Unsigned

AB3349



Lalit Mohan Sen (b.1898 - d.1954)

Untitled (Rural Scene)
Unique gelatin silver print
9.9 x 11.9 in. (25.3 x 30.4 cm.)
c.1940s - 1950s
Unsigned

AB3350



BIO

Ali Akbar P N was born in 1996 in Kerala. The artist studied Painting at the Government College of Fine Arts, Thrissur, and Maharaja Sayaji Rao University, Vadodara, Gujarat, graduating in 2020. He has participated in many significant exhibitions, with his most recent solo exhibition being 'Salts from Many Seas' at Emami Art in 2024. His work revolves around trade, memories, cultural migration and identities. He currently resides and works in Vadodara, Gujarat, India.

Anjan Modak was born in 1982 in West Bengal, India. He studied Painting at Rabindra Bharati University, graduating in 2009. He has been the subject of two solo shows, 'Fragmented Life' (2020) and 'Black, White and More' (2016), held at Emami Art, Kolkata and a duo show, 'Between the Self and Silhouettes', curated by Adip Dutta at Emami Art (Kolkata, 2022). His works are concerned with the migrant city workers and dreams and despairs of their lives. Anjan Modak lives and works in Kolkata.

Arindam Chatterjee was born in Kolkata and studied Painting at the Government College of Art & Craft, Kolkata and Kala Bhavana, Visva-Bharati, Santiniketan and has since exhibited nationally and internationally with several solo shows in India, the last being Not a Dream, Not Peace, Not Love at Emami Art, Kolkata (2024). His work primarily concerns the human condition, brute facts and violence of our time.

Arunima Choudhury was born in 1950 In Siliguri, West Bengal and studied Painting at the Indian College of Art and Draftsmanship and Design and Mass Communication at Chitrabani, Kolkata, between 1970 and 1978. Working primarily with vegetable colours on handmade paper, she is known for her works depicting the languid world of nature and human beings, their intimacy and coexistence. She has participated in several solo and group exhibitions and, most recently, is the subject of The Dark Edge of Green solo show at Emami Art (Kolkata 2022). Arunima Choudhury lives and works in Kolkata.

Debashish Paul, born in 1994, is a multidisciplinary contemporary sculptor and performance artist whose critical work explores the problems of queer identity in a society dominated by heterosexual norms. He graduated from Banaras Hindu University, Varanasi. He performed worldwide and exhibited his work, including his ongoing solo show at Emami Art, 'A Thousand Years of Dreaming.' Debashish Paul lives and works in Varanasi and Nadia, West Bengal.

Ghana Shyam Latua was born in 1992 in West Midnapore and studied Painting in Kala Bhavana, Visva-Bharati, graduating in 2017. His recent works, known for his novel pin-prick technique, speak of his love for pure, uninhabited landscapes and his lament for nature's destruction by the expansion of urbanization and tourism. He participated in many significant exhibitions and did a solo show, The Lament of the Red Earth, at Tapetenwerk Gallery, Leipzig, Germany (2022). He lives and works in Santiniketan, West Bengal.

Prasanta Sahu was born 1968 in Odisha, India, and studied Painting at Kala Bhavana, Visva Bharati and MS University, Baroda, graduating in 2000. Sahu has shown his work widely within and outside the country and participated in numerous workshops and residencies. His recent solos include Anatomy of a Vegetable: Ruminations on Fragile Ecosystems at Kochi Muziris Biennale 2022-23. Prasanta Sahu lives and works in Santiniketan, India.

Shilpi Sharma was born in 1997 in West Bengal and completed her master's in ceramics from Kala Bhavana, Visva Bharati University. Shilpi's ceramic works are inspired by various natural patterns and designs, like floral patterns, works of water on stone, weathering, lichens, and the structure of honeycombs. She has participated in many exhibitions, including the exhibition at the Italian Consulate for the 700th Death anniversary of Dante Alighieri (2022) and "Bhū" – Emami Art, Ceramics Exhibition (2021). Shilpi Sharma lives and works in Santiniketan, West Bengal.

Sibaprasad Karchaudhuri was born in 1944 in West Bengal and studied Applied Arts at the Government College of Art & Craft, Calcutta, graduating in 1966. He also took training in design under Helena Perheentupa, a Finnish Designer at NID, Ahmedabad and Graphic Art under Geoffrey Bowman at San Jose State University, California. He has been the subject of several solo shows in India and abroad, including his latest, The Dream of an Idiot, at Emami Art, Kolkata. He participated in the British Textile Biennale in 2023. Sibaprasad Karchaudhuri lives and works in Santiniketan.

Soma Das was born in 1979 in Kolkata, West Bengal and studied Painting at Rabindra Bharati University, Kolkata, graduating in 2009. Working in the detailed, placid styles of miniature Painting, she portrays in her work the life of working people, primarily women from humble economic backgrounds. She has been the subject of the solo show Different Facets of Life at Gallery Nakshatra, Kolkata, 2010 and the major duo group show Between Selves and Silhouettes at Emami Art (Kolkata, 2022). She was selected as an artist in residence at the Kira A. Princess of Prussia Foundation in collaboration with Emami Art Residency (2022). Currently, she is in residency at Hampi Art Labs for the October – December (2024) session. Soma Das lives and works in Kolkata.

Suman Dey, born in 1981 in Kolkata, is a contemporary artist based in Kolkata. Largely self-taught, he works in the language of abstract art, distilling the visible form into an abstract motif. Suman Dey has exhibited widely in several group and solo shows in India. He was the subject of his recent solo show, The Lost Fragrance of Memory, at Emami Art. Suman lives and works in Kolkata, India.

Tapas Biswas born in 1972 in West Bengal is a noted contemporary sculptor based in Kolkata. He studied Visual Arts at the Government College of Art and Craft, Kolkata, and Banaras Hindu University, Varanasi, graduating in 2000. Biswas has been the subject of solo shows at Aakriti Art Gallery, Kolkata and Kalakriti Art Gallery, Hyderabad. In addition, his work has been featured in numerous significant group exhibitions in India, Singapore, France and Sweden, including Fluid Boundaries (2020) and Ekkhan (2024), Emami Art Gallery, Kolkata. Tapas Biswas lives and works in Kolkata.

Ujjal Day was born in 1992 in Ranchi, India. He is a contemporary textile artist pursuing a doctorate from Visva-Bharati, Santiniketan. He studied textile and design at Kala Bhavana, Santiniketan, graduating in 2017. He was part of Fragments of Our Time, British Textile Biennial 2023, UK and the subject of his recent solo show at Emami Art, Dawn to Dusk: A Silent Symphony (2024). Ujjal Dey lives and works in Santiniketan, West Bengal.

Francis Newton Souza was born in April 1924 in Portuguese Goa to his father, Joseph Newton, an English teacher, and mother, Lily Mary Antunes, in a Catholic family of Konkani origin. He grew up in Bombay and studied art at J J School of Art. The Roman Catholic Church, with its architectural elegance and services, had a decisive impact on him, and he, for a short while, was associated with the Communist Party of India. In 1949, soon after he had founded the historic Progressive Artists' Group (PAG) with SH Raza, MF Hussain, Ara, Gade and Bakre in 1947, Souza left India, and his career flourished in Europe and America, shaping India's artistic modernism in the post-Independence era. As early as 1955, Souza published his famous autobiography, *The Nirvana of Maggot*, coinciding with his Gallery One exhibition. Widely exhibited in India and abroad, he is known for his powerful figurative images and erotic imagination, which show his complex religious views, life, and various artistic traditions and styles. Renowned art critic John Berger wrote that Souza "Straddles many traditions but serves none". At the end of the 1970s, Souza regularly visited India for his Mumbai, Delhi and Kolkata exhibitions. Souza received many awards, including the Guggenheim International Award, the highest monetary award in the arts, in 1967. Prestigious institutions worldwide have his works in their collections, including the Tate Britain, which hosted his solo show, *Religion and Erotica*, in 2005. A prolific painter, writer and poet, Souza died in 2002.

Kartick Chandra Pyne was born in 1931 in Kolkata. He studied painting at the Government College of Art and Craft, Calcutta, between 1950 and 1955. A prolific and taciturn artist, his work was shown as one of the hundred exhibits representing modern Indian Art in the historic exhibition at Fukuoka Art Museum, Japan, in 1979. His paintings were part of the ICCR exhibition in Bangladesh in 1991-92. Since the 1960s, his work has been featured in numerous solo exhibitions at Jehangir Art Gallery, Mumbai; Academy of Fine Arts, Kolkata; Bajaj Art Gallery, Mumbai; Chitrakoot Art Gallery, Kolkata; Lalit Kala Akademi, New Delhi; Dhoomimal Art Gallery, New Delhi, among many others. A recent retrospective-scale survey exhibition of his work was organized by Emami Art, Kolkata, in 2021. He received the prestigious Shilpi Maha Samman and Abanindra Puraskar of the Government of West Bengal. Rajya Charukala Parshad made a documentary film on him called "Line, Story, Design," which was released in 2017. Kartick Chandra Pyne died in Kolkata in 2017.

K G Subramanyan was born in 1924 in rural Kerala. He played a pivotal role in shaping India's artistic identity after Independence. Initially studying economics, his involvement in the freedom struggle led to his imprisonment and debarment from college. He then joined Kala Bhavan, Visva-Bharati University, Santiniketan, which proved to be an enduring association. Graduating in 1948, he worked under such luminaries as Benode Behari Mukherjee, Nandalal Bose and Ramkinkar Baij. Subramanyan then taught at M. S. University, Baroda, and returned to his alma mater in Santiniketan as a professor in 1980. Mani-da, as he was fondly called, seamlessly blended the elements of modernism with folk expression in his works that spanned paintings, murals, sculptures, prints, set designs and toys. Spanning more than seven decades, Subramanyan's art was featured in over fifty solo exhibitions, receiving prestigious awards such as the Medallion of Honourable Mention (Sao Paulo Biennale, Brazil) and the Lalit Kala Akademi's National Award. In 2012, he received the Padma Vibhushan, India's second-highest civilian award, for his outstanding contribution to the arts. He remained dedicated to teaching until his retirement in 1989, following which he was appointed as a professor emeritus at Visva-Bharati. In the later stages of his life, Subramanyan lived with his daughter in Baroda, where he passed away in 2016 at the age of 92. His contributions have left an indelible mark on contemporary art, blending tradition with innovation.

Lalit Mohan Sen was born in 1898 in Santipur, West Bengal into a family closely associated with the place's famous handloom textile tradition. He studied art at the Government School of Arts and Crafts, Lucknow (1917) and later studied wood engraving at the Royal College of Art, London (1925). A pupil of Nathaniel Heard and Sir William Rothenstein, he excelled in academic realism, portrait and landscape. A member of the Royal Photographic Society of Great Britain, Sen, took training in various graphic art mediums under the guidance of the celebrated etcher Malcolm Osborne. He later became the Principal of Government School of Arts and Crafts in 1945. The renowned art historian Laurence Binyon commissioned him to copy the Bagh Cave paintings. He was one of the four artists the Government of India hired to decorate the newly built India House in London. His paintings, prints, posters and photographs were widely exhibited and praised in India and abroad. Queen Mary appreciated his tempera painting 'Potter Girl' in the Royal College of Art exhibition in 1930 and bought it for the royal collection. In the early-1920s, he was the only Indian artist whose woodcuts Victoria & Albert Museum had displayed in the Museum's print room as permanent exhibits. Sen's photographs were shown in the Royal Photographic Society's annual exhibition and published in the Society's journal. Besides these, he was a reputed book illustrator known for his commercial art. He won the Federation of British Industries Prize (London) for the best poster design. Emami Art curated Sen's major retrospective, 'Lalit Mohan Sen: An Enduring Legacy', 2024 in consultation with Art Historian Debducta Gupta. The versatile artist, consummate teacher, and a well-known cultural figure throughout his career, passed away in Lucknow in 1954.

EMAMI ART

KOLKATA, INDIA

Emami Art is a prominent contemporary art gallery and cultural production space located on the ground floor of the Kolkata Centre for Creativity's Green Building. Established in 2017, it adopts a forward-looking, multi-dimensional approach that reflects South Asia's history, socio-cultural, and geo-political narratives. Emami Art operates within an inclusive framework where profitability supports sustainable resource regeneration and public service.

The gallery features a dynamic program of curated exhibitions, ranging from large-scale presentations to more intimate displays. It actively participates in both national and international events and art fairs. Emami Art represents a wide spectrum of contemporary artists, including emerging, mid-career, and established talents, with a special emphasis on the East and North Eastern regions of India. Several of its artists' works are featured in prominent national and international collections, including public foundations and museums.

A key initiative is the annual Emami Art Experimental Film Festival, which provides a platform for alternative and experimental filmmaking, video art, and moving image practices. This festival brings together internationally acclaimed artists and filmmakers alongside recent critical productions from India. Through short- and long-term projects, Emami Art supports the local and regional arts community by offering regular mentorship programs, workshops, residency opportunities, and innovative educational activities. These initiatives foster artistic development, build collaborative networks, and provide a supportive environment for emerging talent. The gallery also organizes regular talks, seminars, panel discussions, and conversations with artists, curators, and key partners, creating a space for critical engagement.

Committed to promoting a regional, national, and international agenda, Emami Art emphasizes community engagement, socially relevant initiatives, and institutional partnerships. With a multi-year vision for the future, it continues to be a catalyst for change, research, innovation, and inclusivity.

[PRESS RELEASE](#)

The press release contains:

- 1) Press release (with Lead quotes, artist bios, date, time, venue, overview, press contact info, Social media handles etc)
- 2) Press images
- 3) Image credits

Artists represented by Emami Art:

- | | |
|----------------------|---------------------------|
| • Ali Akbar PN | • Janhavi Khemka |
| • Anjan Modak | • Prasanta Sahu |
| • Arindam Chatterjee | • Santanu Debnath |
| • Arpita Akhanda | • Shilpi Sharma |
| • Arunima Choudhury | • Sibaprasad Karchaudhuri |
| • Bholanath Rudra | • Soma Das |
| • Debashish Paul | • Suman Dey |
| • Ghana Shyam Latua | • Ujjal Dey |

[TO KNOW MORE ABOUT THE ARTISTS](#)

