

Portfolio

EMAMI ART

Selected works

Vishal Kumar Gupta



Vishal Kumar Gupta engages with the natural world in expressive, painterly explorations of twigs, branches, and tree stumps. Often dismissed as incidental, these objects reappear as monumental gestures — not as motifs, but as active witnesses to memory and time. For Gupta, the found object carries an intimate resonance. On the one hand, discarded wood speaks of decay; on the other, it suggests continuity shaped by absence.

His attentiveness to nature took root during his years at Kala Bhavana, Santiniketan, continuing into his Master's studies in Baroda, where photography complemented a practice of observation, drawing, and collection. The beginning of a work is not a mark on paper or canvas, but the insistence of a presence that commands attention. In the studio, a single branch resting on the floor can shape the work long before the first brushstroke, extending the field beyond landscape into the artist's personal space as an iterative record of encounter.



[Watch the artist discuss his practice](#)



In this way, fragmentation becomes central to this practice. Rather than offering unified or resolved images, Gupta allows partial gestures, interruptions, and shifts in density to dictate how he approaches his work and the formats it assumes. A single idea explored across multiple frames functions as charged units — self-contained yet relational — carrying ambiguity while inviting speculation. While singular works can be apprehended as wholes, understanding unfolds in shifts of attention, return, and pause. Elements coexist, allowing the viewer to move freely across marks and textures. This condition resonates with a broader understanding of the subject in flux. Drawing, in particular, becomes a means of negotiating this durational state, accommodating abandon as well as restraint.

Gupta's artistic language hovers between abstraction and corporeality. Gesture unfolds as a negotiation, shaped as much by the behaviour of materials as by the artist's hand. Thick impasto oil paints coagulate and fracture, settling under their own weight. These viscous surfaces do more than record external action; rather, they register an internal upheaval. Pigments assert their own pull, guiding attention and determining how images emerge through repetition as a lived process that resists closure.

Watch the artist discuss his practice



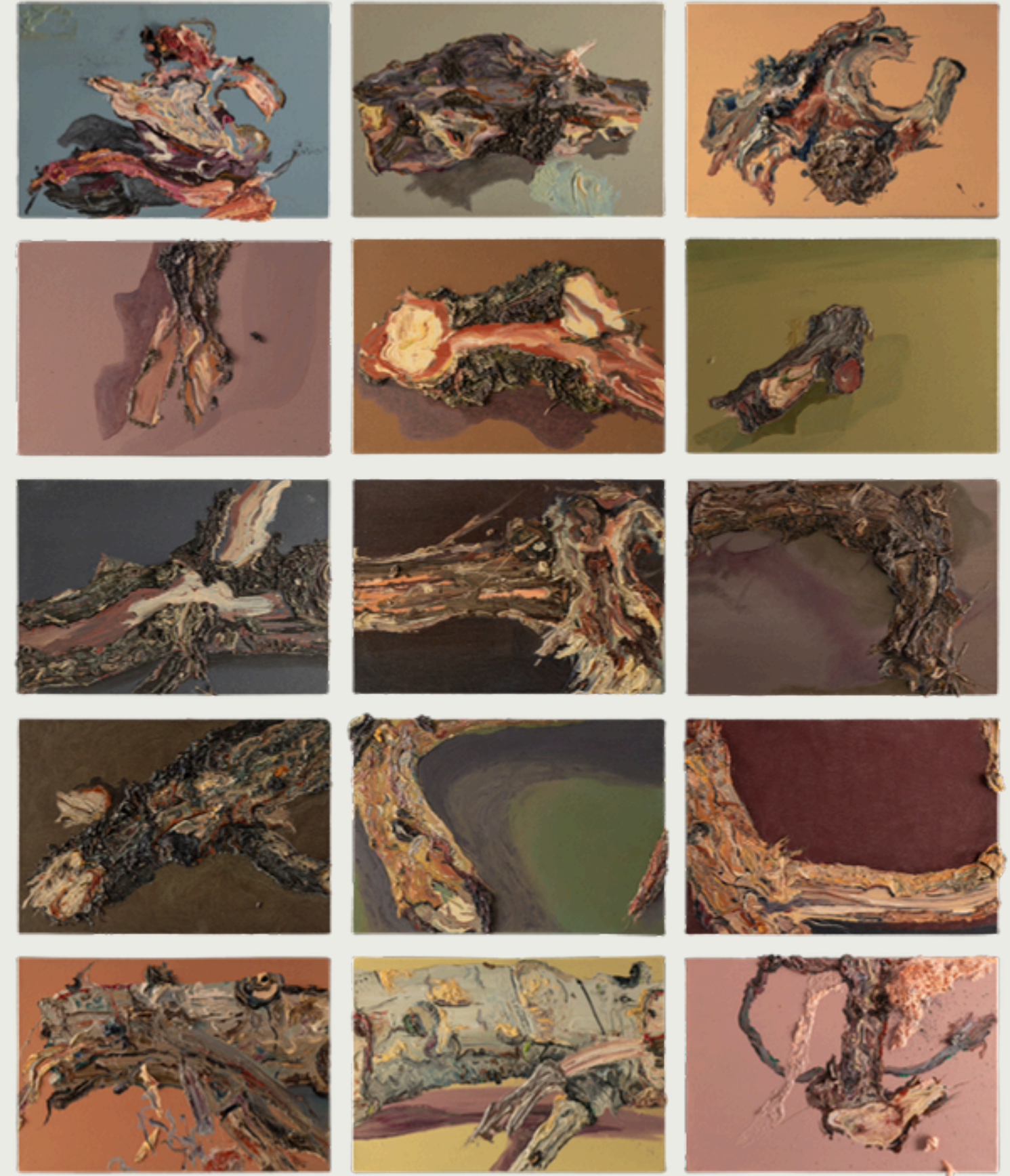


Installation view

Field Notes (On the Afterlife of Trees)

A Solo Exhibition by Vishal Kumar Gupta,
2026, Emami Art

This group of paintings by Vishal Kumar Gupta presents fragments of wood from a tree, treated as still-life subjects. Viewed from different angles, the works explore their varied forms and quiet, monumental presence.



Fragment as Still Life or Something Else! II
(Series: Fragment as Still Life or Something Else!)
Oil impasto on canvas
12 1/4 x 18 1/4 x 2 1/2 in. (31 x 46.2 x 6.5 cm.) each approx.
Set of 15 works
2025, Vadodara



Detail

Fragment as Still Life or Something Else! II
(Series: Fragment as Still Life or Something Else!)

Oil impasto on canvas

12 1/4 x 18 1/4 x 2 1/2 in. each approx.

Set of 15 works

2025

Detail

Fragment as Still Life or Something Else! II
(Series: Fragment as Still Life or Something Else!)

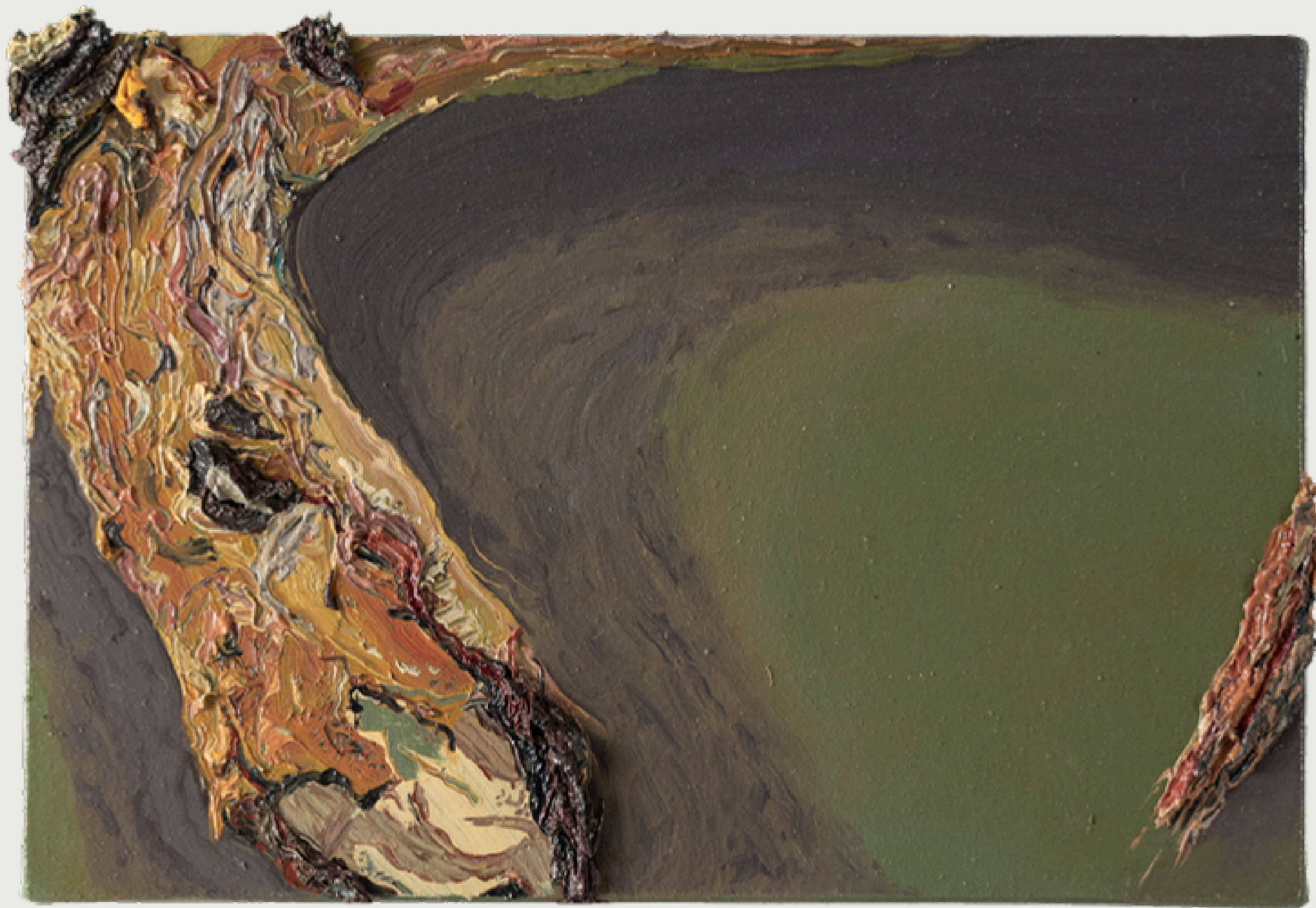
Oil impasto on canvas

12 1/4 x 18 1/4 x 2 1/2 in. each approx.

Set of 15 works

2025





Detail

Fragment as Still Life or Something Else! II
(Series: Fragment as Still Life or Something Else!)
Oil impasto on canvas
12 1/4 x 18 1/4 x 2 1/2 in. each approx.
Set of 15 works
2025

Detail

Fragment as Still Life or Something Else! II
(Series: Fragment as Still Life or Something Else!)

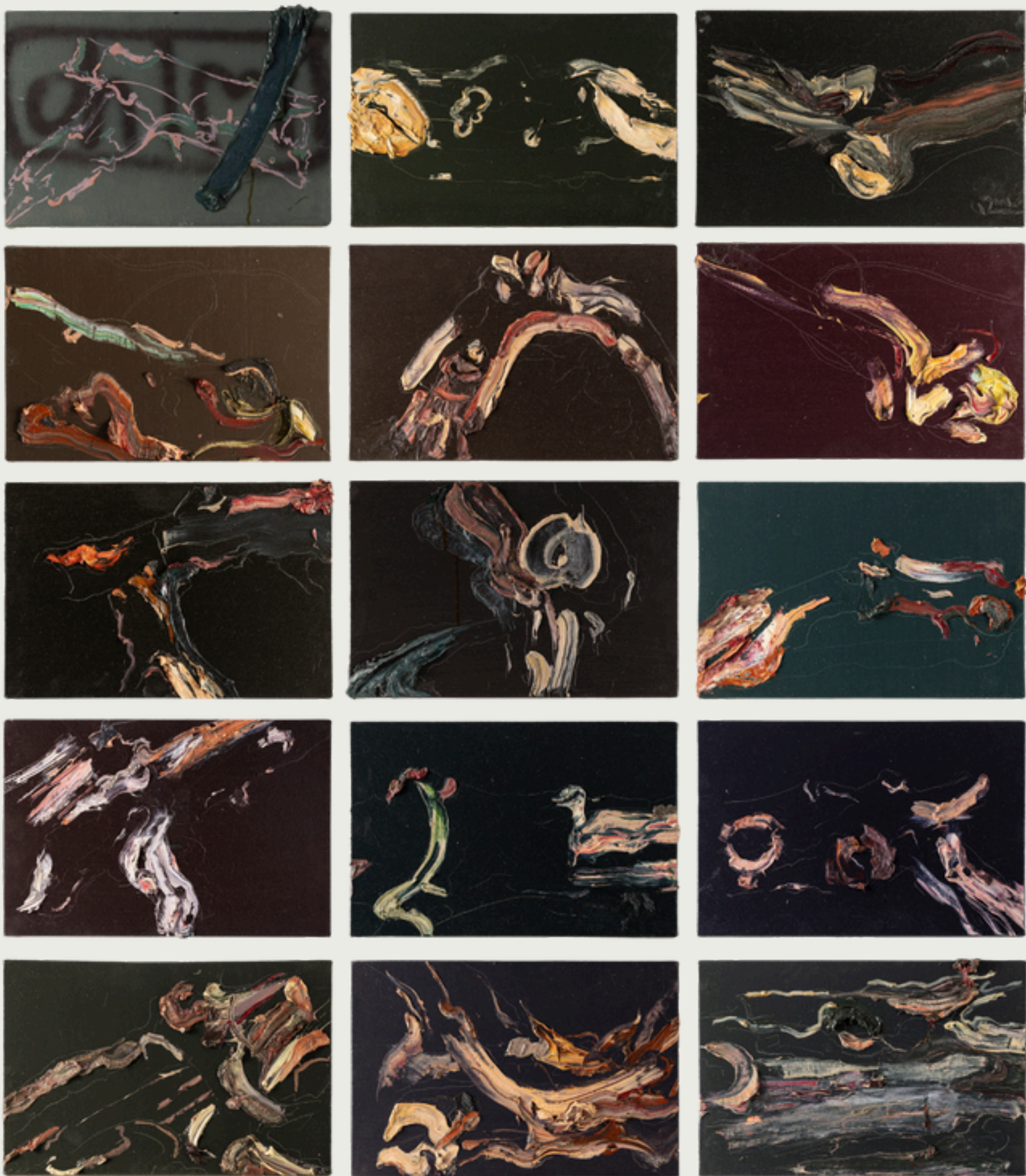
Oil impasto on canvas

12 1/4 x 18 1/4 x 2 1/2 in. each approx.

Set of 15 works

2025





Using thick impasto oil, the artist conveys the physical weight and texture of bark and wood. These paintings shift between close observation and playful exploration, moving from detail toward abstraction.

Fragment as Still Life or Something Else!!
 (Series: Fragment as Still Life or Something Else!)
 Oil impasto on canvas
 Overall dimension variable
 12 1/4 x 18 1/4 x 2 1/2 in. each approx.
 Set of 15 works
 2025, Vadodara

Detail

Fragment as Still Life or Something Else!!

(Series: Fragment as Still Life or
Something Else!)

Oil impasto on canvas

Overall dimension variable

12 1/4 x 18 1/4 x 2 1/2 in. each approx.

Set of 15 works

2025, Vadodara





Detail

Fragment as Still Life or Something Else! I

**(Series: Fragment as Still Life or
Something Else!)**

Oil impasto on canvas

Overall dimension variable

12 1/4 x 18 1/4 x 2 1/2 in. each approx.

Set of 15 works

2025, Vadodara

Detail

Fragment as Still Life or Something Else!!

(Series: Fragment as Still Life or
Something Else!)

Oil impasto on canvas

Overall dimension variable

12 1/4 x 18 1/4 x 2 1/2 in. each approx.

Set of 15 works

2025, Vadodara



Fragment as Still Life or Something Else! III
(Series: Fragment as Still Life or Something Else!)
Oil impasto on canvas
Overall dimension variable
12 1/4 x 18 1/4 x 2 1/2 in. each approx.
Set of 15 works
2025, Vadodara





Detail

Fragment as Still Life or Something Else! III
(Series: Fragment as Still Life or Something Else!)

Oil impasto on canvas

Overall dimension variable

12 1/4 x 18 1/4 x 2 1/2 in. each approx.

Set of 15 works

2025, Vadodara

Detail

Fragment as Still Life or Something Else! III

(Series: Fragment as Still Life or
Something Else!)

Oil impasto on canvas

Overall dimension variable

12 1/4 x 18 1/4 x 2 1/2 in. each approx.

Set of 15 works

2025, Vadodara





Detail

Fragment as Still Life or Something Else! III
(Series: Fragment as Still Life or Something Else!)

Oil impasto on canvas

Overall dimension variable

12 1/4 x 18 1/4 x 2 1/2 in. each approx.

Set of 15 works

2025, Vadodara



Fragment as Still Life or Something Else! IV
(Series: Fragment as Still Life or Something Else!)
Oil impasto on canvas
Overall dimension variable
12 1/4 x 18 1/4 x 2 1/2 in. each approx.
Set of 15 works
2025, Vadodara



Detail

Fragment as Still Life or Something Else! IV
(Series: Fragment as Still Life or
Something Else!)

Oil impasto on canvas

Overall dimension variable

12 1/4 x 18 1/4 x 2 1/2 in. each approx.

Set of 15 works

2025, Vadodara

Detail

Fragment as Still Life or Something Else! IV

(Series: Fragment as Still Life or
Something Else!)

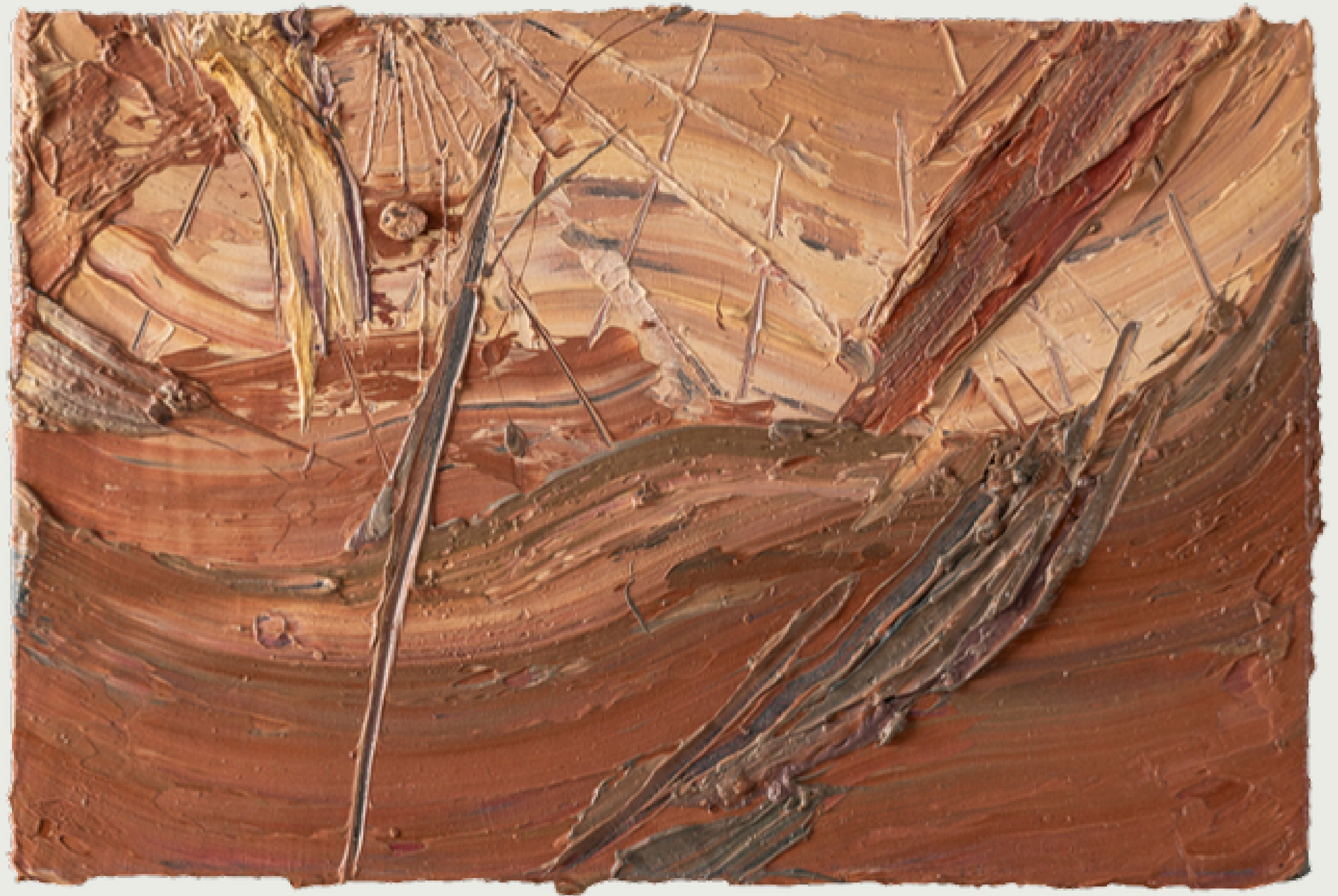
Oil impasto on canvas

Overall dimension variable

12 1/4 x 18 1/4 x 2 1/2 in. each approx.

Set of 15 works

2025, Vadodara





Detail

Fragment as Still Life or Something Else! IV
(Series: Fragment as Still Life or
Something Else!)

Oil impasto on canvas

Overall dimension variable

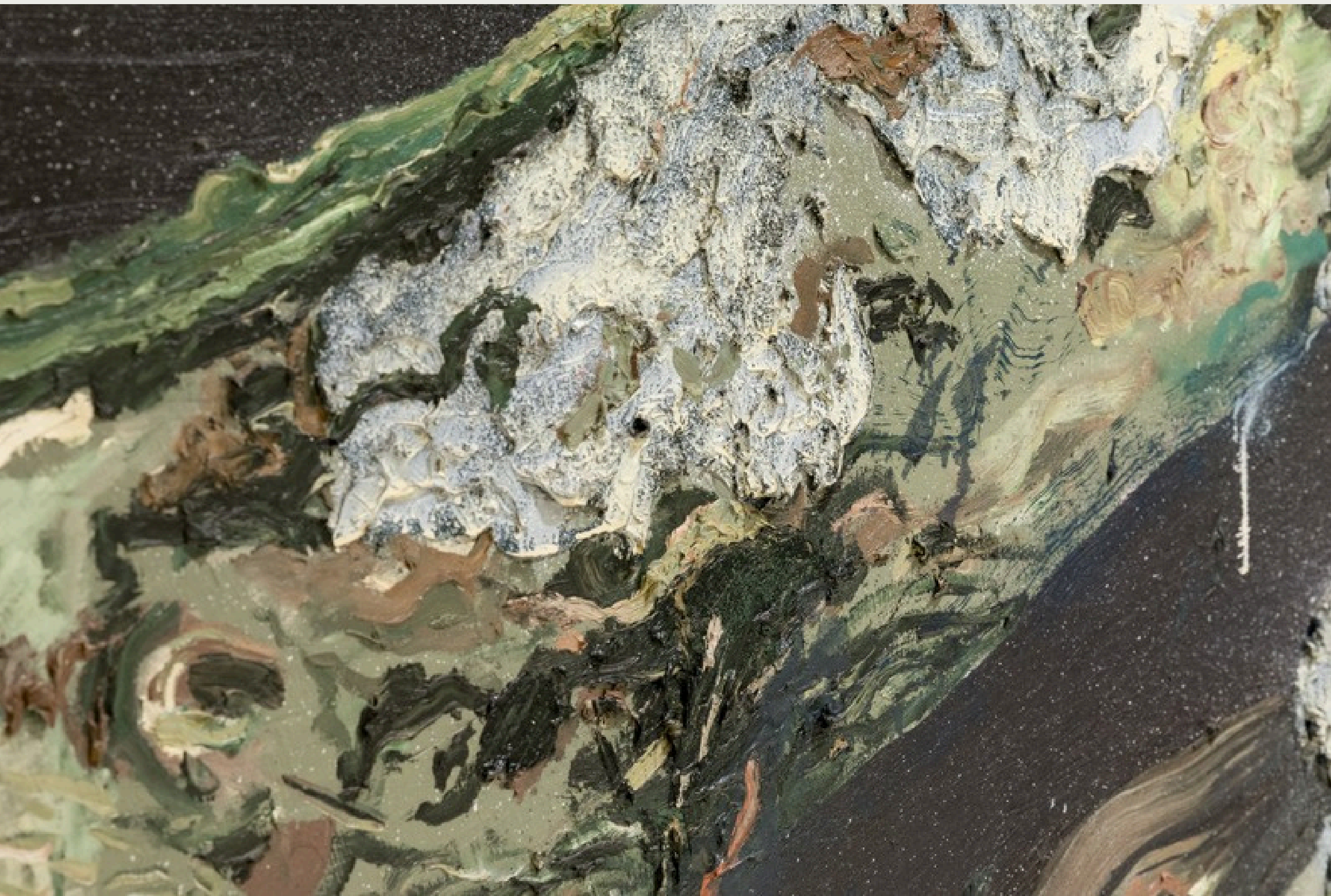
12 1/4 x 18 1/4 x 2 1/2 in. each approx.

Set of 15 works

2025, Vadodara



Fragment as Landscape or Body! II
(Series: Fragment as Landscape or Body!)
Oil impasto on canvas
54 3/8 x 108 1/8 in.
2025, Vadodara



Detail

Fragment as Landscape or Body! II
(Series: Fragment as Landscape or Body!)
Oil impasto on canvas
54 3/8 x 108 1/8 in.
2025, Vadodara



Fragment as Landscape or Body! I
(Series: Fragment as Landscape or Body!)
Oil impasto on canvas
54 3/8 x 108 1/8 in.
2025, Vadodara

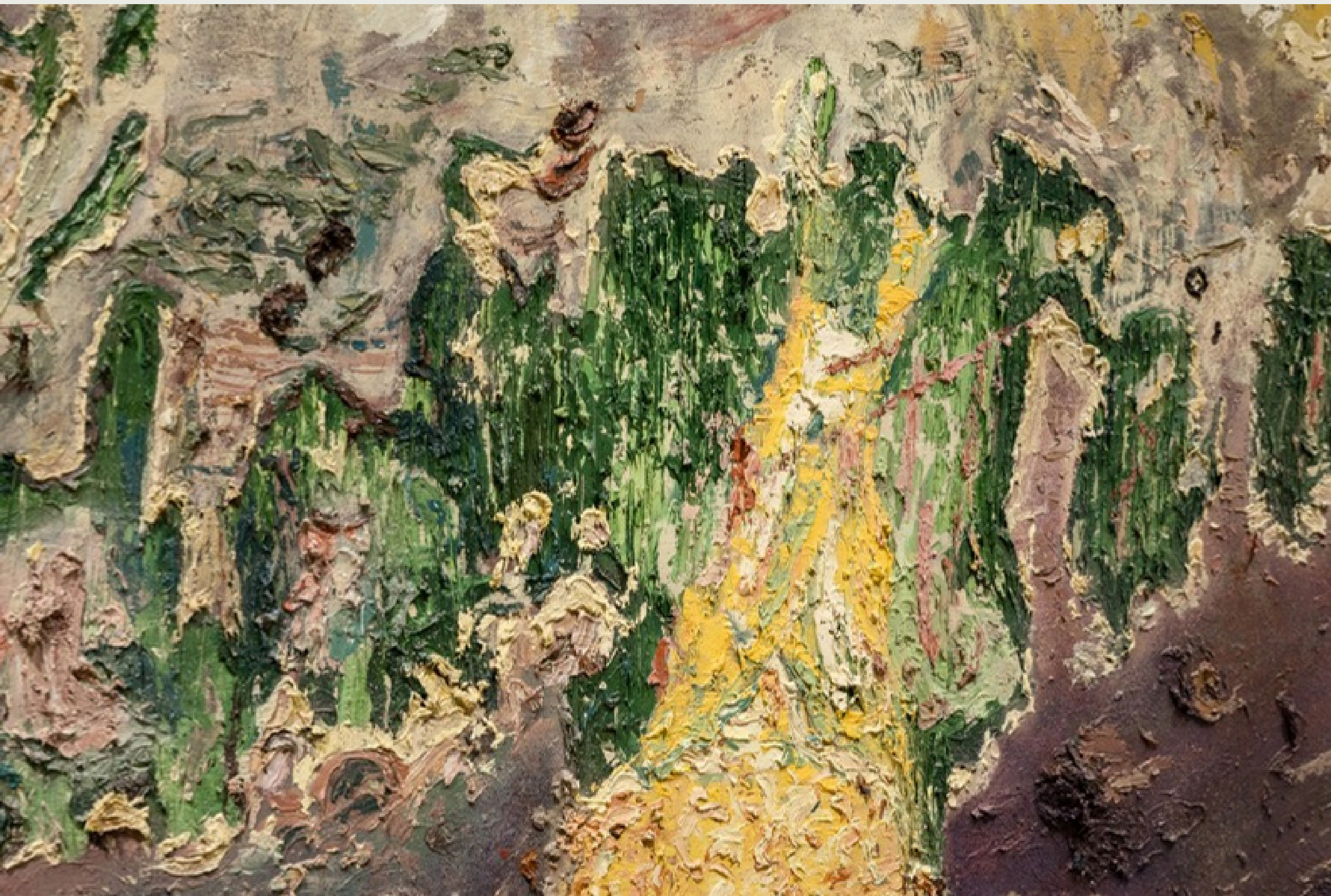
Detail

Fragment as Landscape or Body! I
(Series: Fragment as Landscape or Body!)
Oil impasto on canvas
54 3/8 x 108 1/8 in.
2025, Vadodara





Fragment as Landscape or Body! III
(Series: Fragment as Landscape or Body!)
Oil impasto on canvas
54 3/8 x 108 1/8 in.
2025, Vadodara



Detail

Fragment as Landscape or Body! II
(Series: Fragment as Landscape or Body!)
Oil impasto on canvas
54 3/8 x 108 1/8 in.
2025, Vadodara

Fragment as Landscape or Body! X
(Series: Fragment as Landscape or Body!)
Graphite on paper
Overall dimension variable
4 1/4 x 5 7/8 in. (10.7 x 15 cm.) each
Set of 36 works
2024-2025, Vadodara





Detail

Fragment as Landscape or Body! X
(Series: Fragment as Landscape or Body!)

Graphite on paper

Overall dimension variable

4 1/4 x 5 7/8 in. (10.7 x 15 cm.) each

Set of 36 works

2024-2025, Vadodara

Detail

Fragment as Landscape or Body! X
(Series: Fragment as Landscape or Body!)
Graphite on paper
Overall dimension variable
4 1/4 x 5 7/8 in. (10.7 x 15 cm.) each
Set of 36 works
2024-2025, Vadodara





Detail

Fragment as Landscape or Body! X
(Series: Fragment as Landscape or Body!)

Graphite on paper

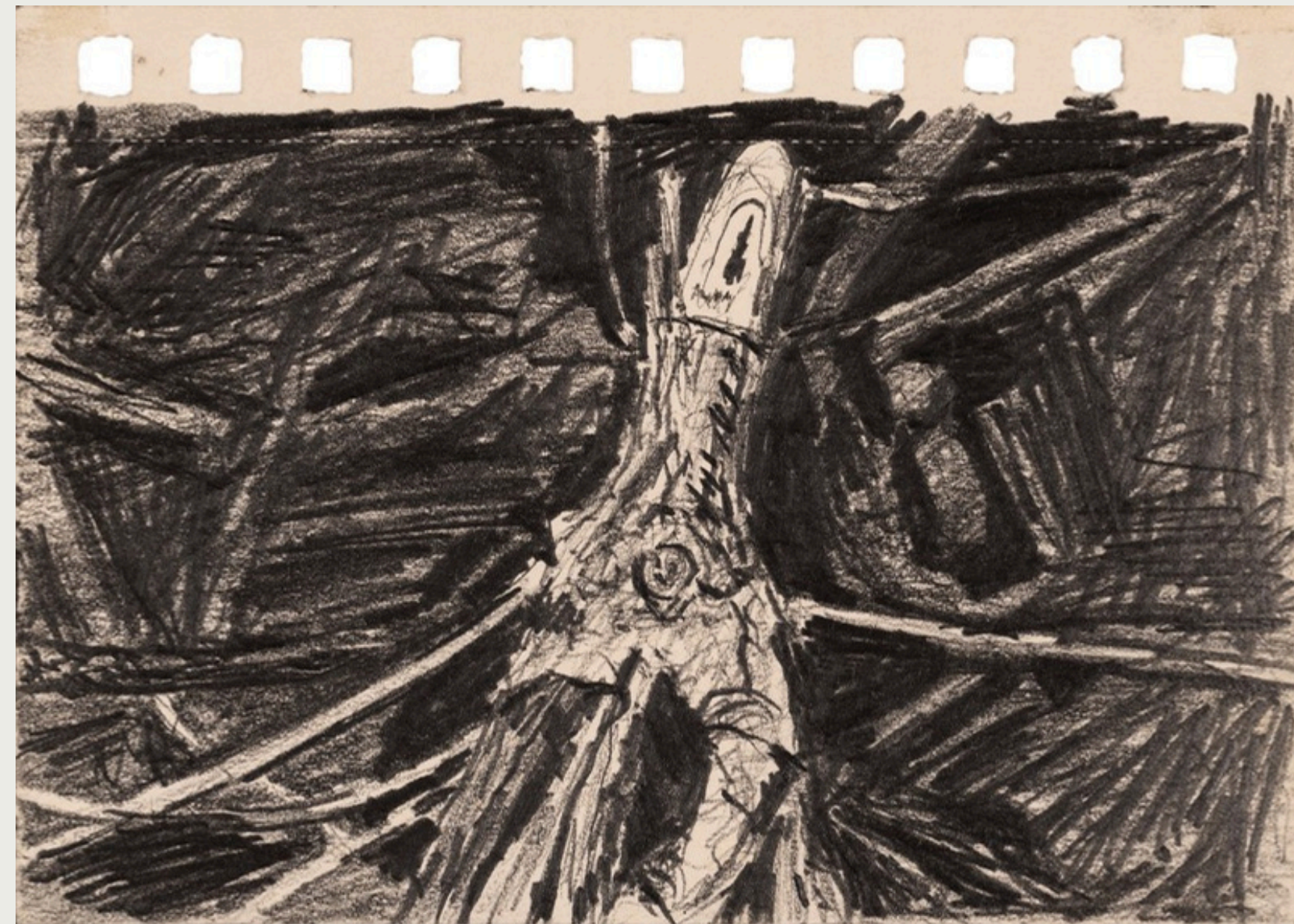
Overall dimension variable

4 1/4 x 5 7/8 in. (10.7 x 15 cm.) each

Set of 36 works

2024-2025, Vadodara





Detail

Fragment as Landscape or Body! X
(Series: Fragment as Landscape or Body!)

Graphite on paper

Overall dimension variable

4 1/4 x 5 7/8 in. (10.7 x 15 cm.) each

Set of 36 works

2024-2025, Vadodara



Vishal Kumar Gupta's watercolour paintings focus on details—grains, lines, textures, and shapes—rather than the complete object. By observing everyday objects from unusual viewpoints, Gupta highlights their visual malleability. Fragmented forms are transformed into images with a new sense of design and identity.

Untitled
Watercolour on paper
39 3/4 x 28 1/4 in.
2025, Vadodara



Untitled
Watercolour on paper
39 5/8 x 28 1/4 in.
2025, Vadodara



Untitled
Watercolour on paper
39 5/8 x 28 1/4 in.
2025, Vadodara



Untitled
Watercolour on paper
39 5/8 x 28 1/4 in.
2025, Vadodara



Fragment as Landscape or Body! XI
(Series: Fragment as Landscape or Body!)

Oil on canvas

18 1/8 x 37 3/8 x 2 3/4 in. overall

Triptych

2025, Vadodara

This painting focuses on a close view of splintered wood. Fractured fibres and bark are rendered through heavy impasto, linking the material nature of wood with that of paint. For Gupta, this material correspondence is more important than representation. As the work develops, the object slowly loses its fixed identity and moves toward abstraction. Rich pigments, textured surfaces, and a restrained palette give the work both visual strength and depth.



Untitled

Oil on canvas

Overall dimension variable

A, C: 4 3/4 x 6 1/8 x 7/8 in. each

B: 4 3/4 x 5 7/8 x 7/8 in.

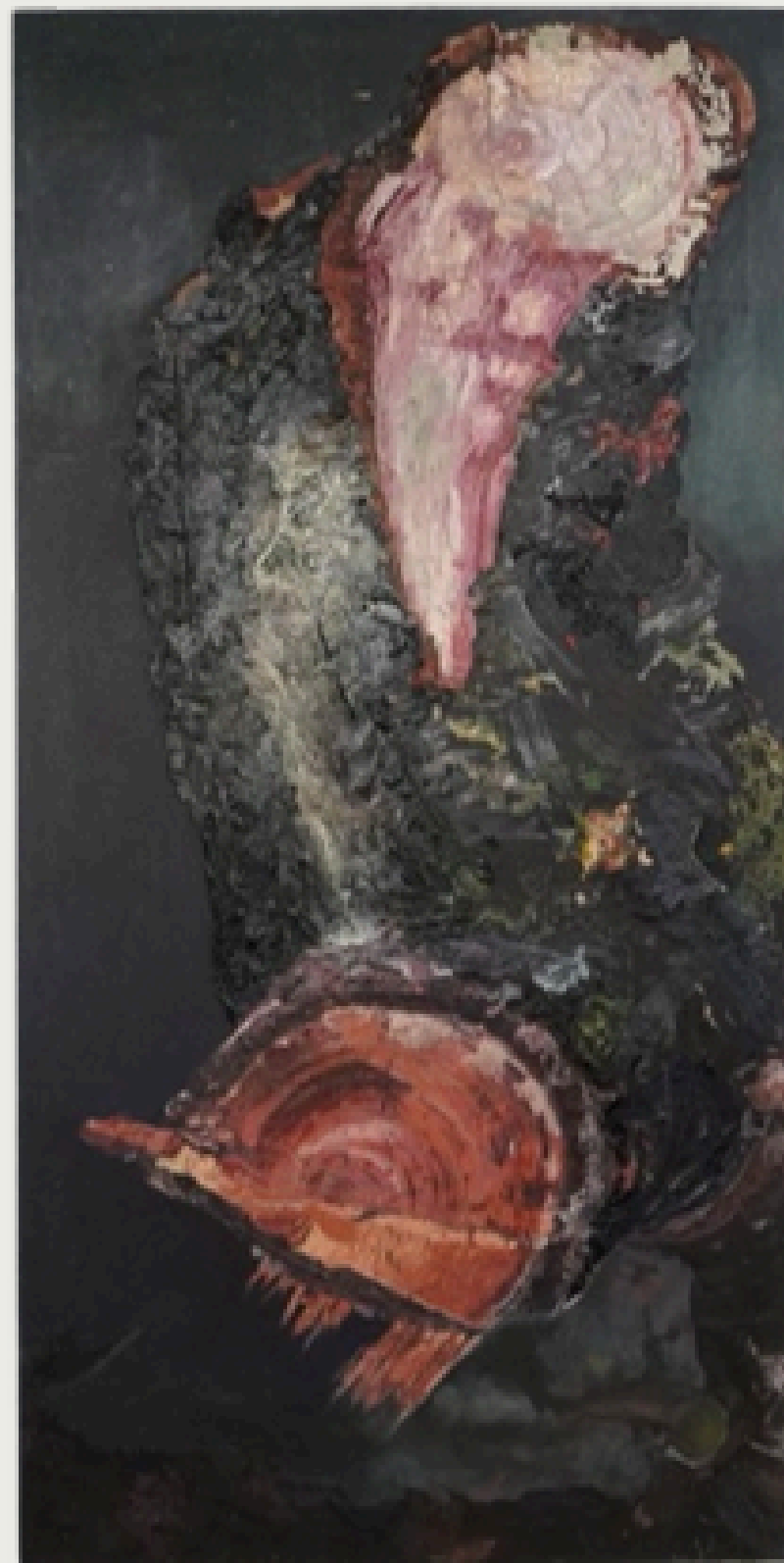
Set of 3 works

2025, Vadodara



Untitled
Oil on canvas
18 1/8 x 14 x 2 in.
2025, Vadodara

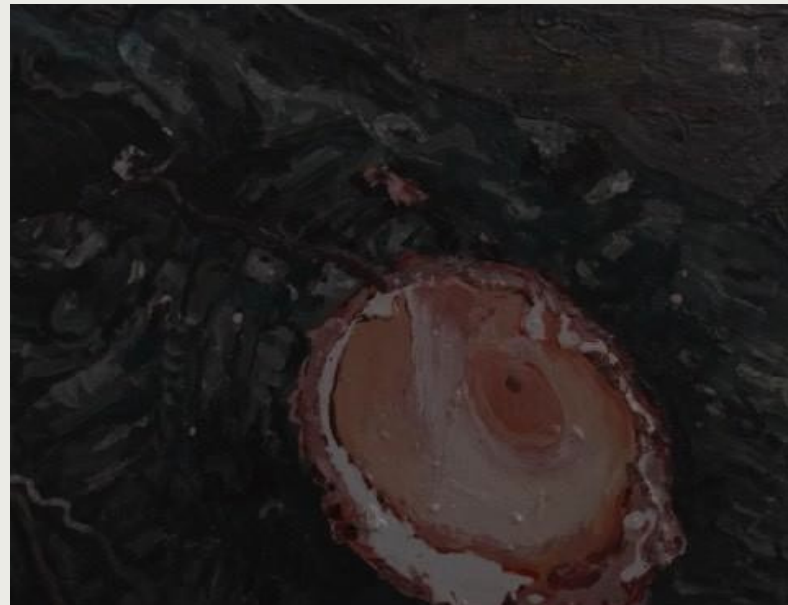
fragment as strange creature!
Oil on canvas
54 × 108 in. each
Set of 3 works
2023





2 works from the set of 3
Graphite on paper
36 × 60 in. each
2024

Set of 6 works
Enamel on ply board
30 × 35 in. each
2023





Set of 3 sculptures
Glass in fusing technique
3.9 × 5.9 × 9 in. approx. each
2022-23



3 works from the set of 12
Graphite, enamel and tree bark on ply board
11.8 × 13.7 in. each
2022

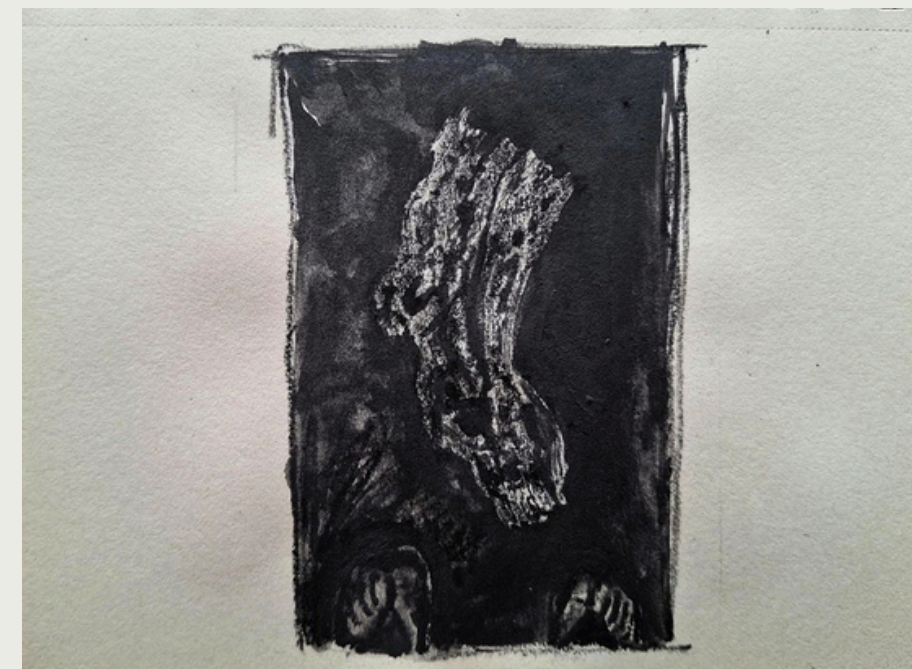
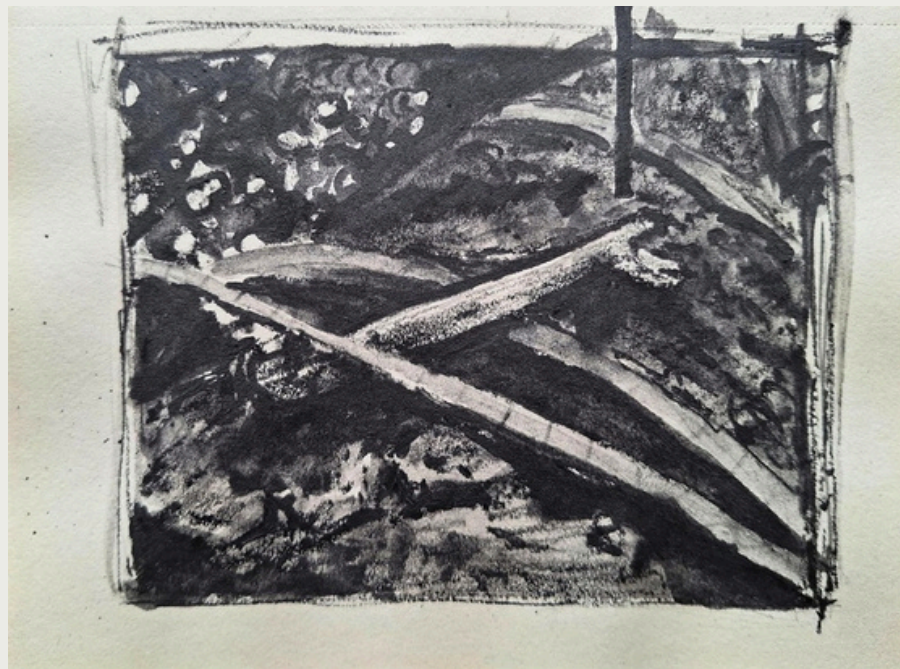


Set of 5 works

Graphite, enamel and tree bark on pine wood

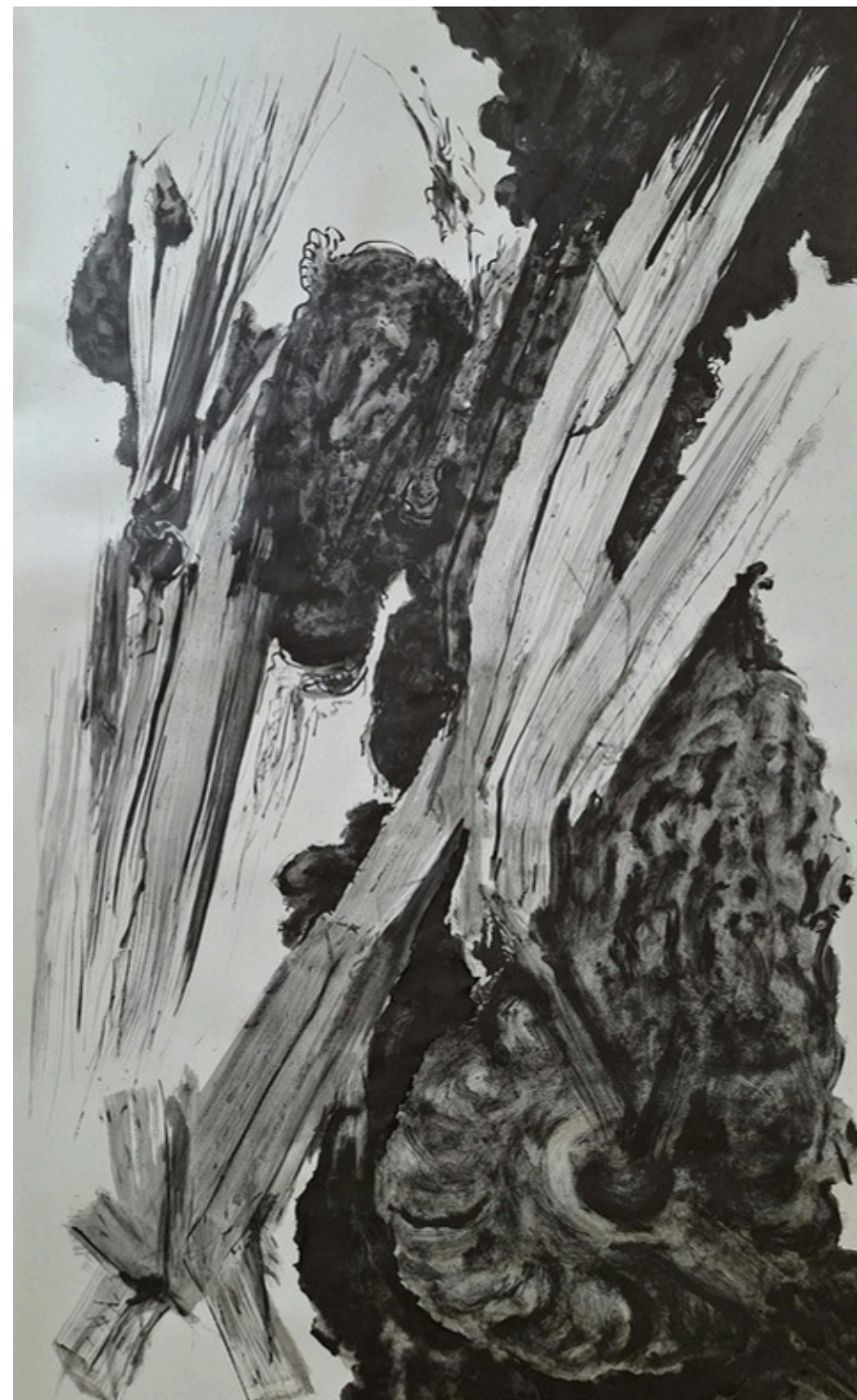
3.7 × 4.7, 3.5 × 5.9, 4.7 × 3.1, 3.5 × 5.9, 4.3 × 4.7 in.

2022



6 works from a sketchbook
Graphite on paper
6.4 × 8.2 in. each

3 works from the set of 15
Graphite on paper
60 × 36 in. each
2024 - 25





It is your flesh that I wear
Graphite frottage on paper
A, B, C, E, F, G - 11.7 × 8.2 in. each, H, I - 16.2 × 11.5 in.
Paper size - 29.5 × 59 in.
2024-25



Born in 1996 in Ranchi, Jharkhand, Vishal Kumar Gupta holds a BFA in Painting from Kala Bhavana, Visva-Bharati, Santiniketan (2021), and an MVA with a gold medal in Creative Painting from the Faculty of Fine Arts at Maharaja Sayajirao University of Baroda (2023).

His debut solo show was *Field Notes (On the Afterlife of Trees): A Solo Exhibition by Vishal Kumar Gupta*, Emami Art, Kolkata (2026). His works have been part of multiple group exhibitions including Edition 6 of *Abhivyakti: The City Arts Project*, ATIRA, Ahmedabad (2024); *All That Is Hidden: Mapping Departures in Landscape, Terrains and Geographies*, Emami Art, Kolkata (2024); MSU Faculty of Fine Arts Annual Display (2022-2023); and Kala Bhavana BFA Online Degree Show (2021). He was selected for the month-long *IMAGINARIUM 3.0 - Residency* at Emami Art, Kolkata (2024); and the Winter Studio Take-over at the Raja Ravi Varma Studio, organized by Indira Gandhi National Centre for the Arts (IGNCA) Regional Center, Vadodara (2024).

He received the Nasreen Mohamedi Award (2022 - 2023) in Painting, and is currently based in Baroda.

EMAMI ART

Emami Art is a prominent contemporary art gallery and cultural production space located on the ground floor of the Kolkata Centre for Creativity's Green Building. Established in 2017, it adopts a forward-looking, multi-dimensional approach that reflects South Asia's history, socio-cultural, and geo-political narratives. Emami Art operates within an inclusive framework where profitability supports sustainable resource regeneration and public service.

Committed to promoting a regional, national, and international agenda, Emami Art emphasizes community engagement, socially relevant initiatives, and institutional partnerships. With a multi-year vision for the future, it continues to be a catalyst for change, research, innovation, and inclusivity.

