

EMAMI ART

Arindam Chatterjee Portfolio of selected works

- Paintings
- Drawings

Tales of homecoming I
Watercolour and
charcoal on paper
25 x 36 inches
63.5 x 91.44 cms
2020
Kolkata



Brief Description

Arindam Chatterjee belongs to the generation of Indian artists who began their careers in the last decades of the twentieth century and have since attempted to create a new, more personalised global language of global significance. He started as an abstract artist and gained a wider reputation; however, around 2007, having felt the urgency for a more direct and communicative form of expression to respond to the conflictual world and its recent history, he turned to figurative paintings.

In the background of the city experience, Arindam Chatterjee's paintings and drawings speak of a dystopian world, the fragile times of modernity: the death, wounds and suffering of human beings, animals and other creatures, real and imagined. Absent in the glaring narrative of neoliberalism, the dark faces of times can amply be found in the post-Tagorian modernist literature of Bengal. Inspired by them and other sources, Arindam Chatterjee's neo-expressionist-like works create a bleak vision of the world, exposing culture's dark past, unrealised potential and unsolved contradictions. Indeed, he moved away from abstract art; the shift has never been complete. Nevertheless, vestiges of abstract art are present in his figurative works, characterised by the rich handling of mediums and indeterminate figures and emotions.



Painting

Tales of homecoming II

Watercolour and
charcoal on paper

25 x 36 inches

63.5 x 91.44 cms

2020

Kolkata

Homecoming: This painting is inspired by the lockdown migration of the labourers in the big cities of India. But the tragedy is not represented here as a particular event, but as an eternal, almost epic episode recurring throughout human history.



Painting

Observer I

Watercolour and dry
pastel on paper

25.8 x 32.8 inches

65.532 x 83.312 cms

2020

Kolkata

Observer: This painting by Arindam Chatterjee is a testimony of our time, bearing witness to the remnants of the social, political and even planetary violence. The reality is shown not as representation, but as allegory, the inscription of displaced meanings.



Painting

Observer II
Watercolour on paper
26.4 x 32.5 inches
67.056 x 82.55 cms
2020
Kolkata



Painting

Observer IV
Watercolour and
charcoal on paper
26 x 33.8 inches
66.04 x 85.852 cms
2020
Kolkata



Painting

Observer V
Watercolour on paper
25.8 x 34 inches
65.532 x 86.36 cms
2020
Kolkata



Painting

Observer VI
Watercolour and
charcoal on paper
25 x 36 inches
63.5 x 91.44 cms
2020
Kolkata



Painting

Mocking bird
Oil on canvas
36 x 36 in
2013



Painting

L

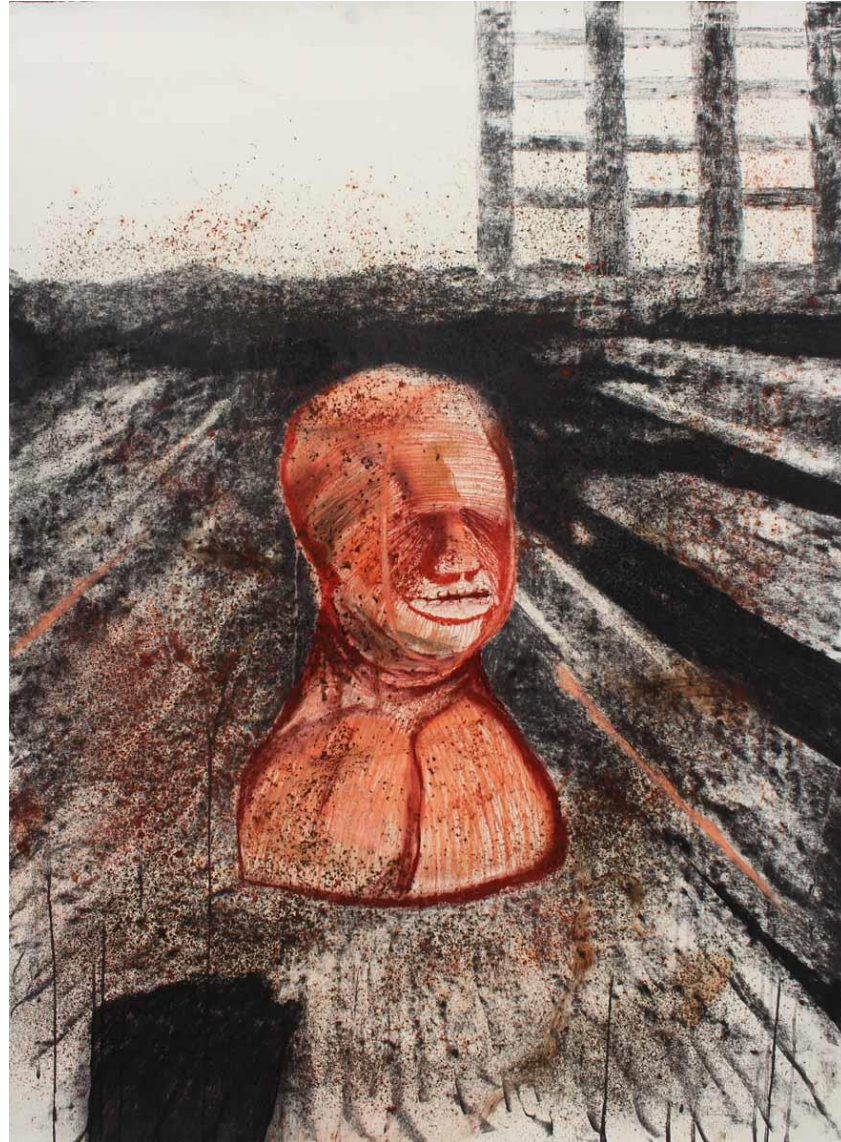
New Town

Water colour, charcoal, dry pastel and
dry pigment on paper
46 x 35 in

R

A very Old Night

Charcoal, water colour, oil pastel and
oil on paper
41 x 30 in
2018

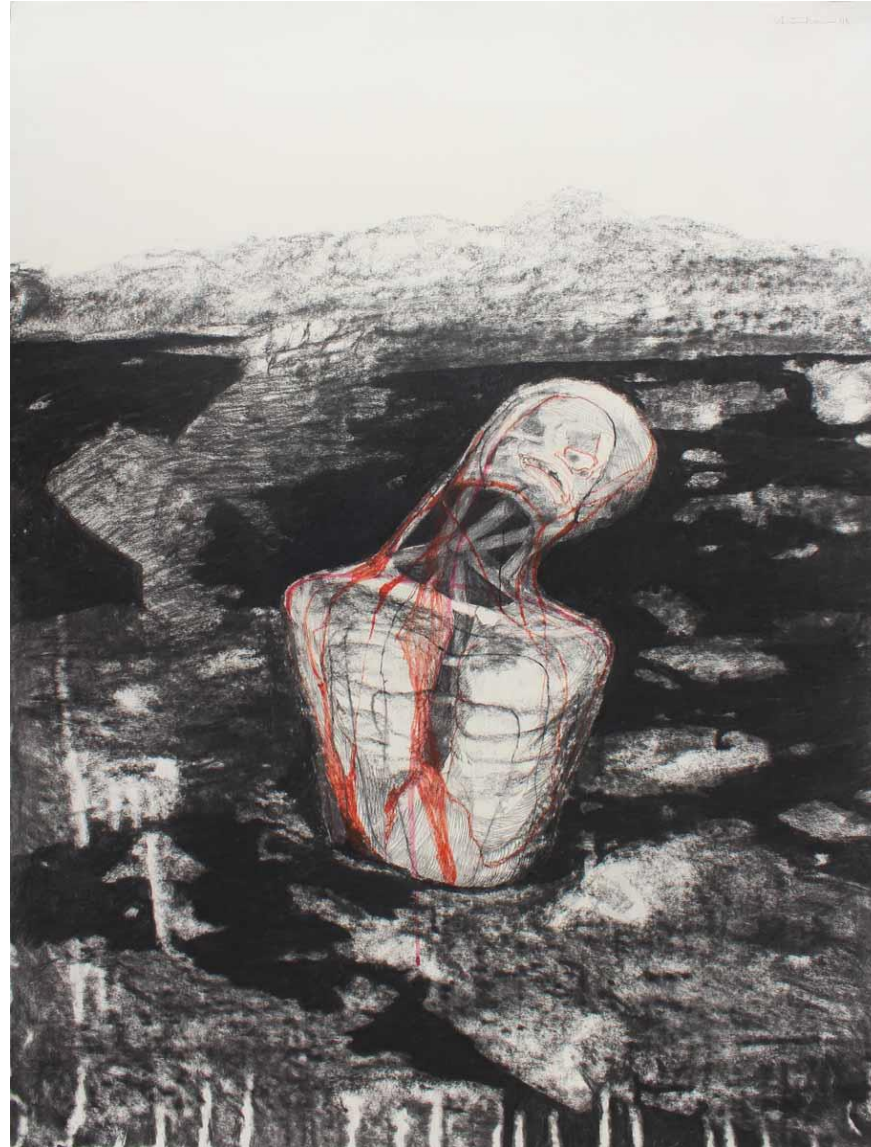


Painting

L

Wasteland 1

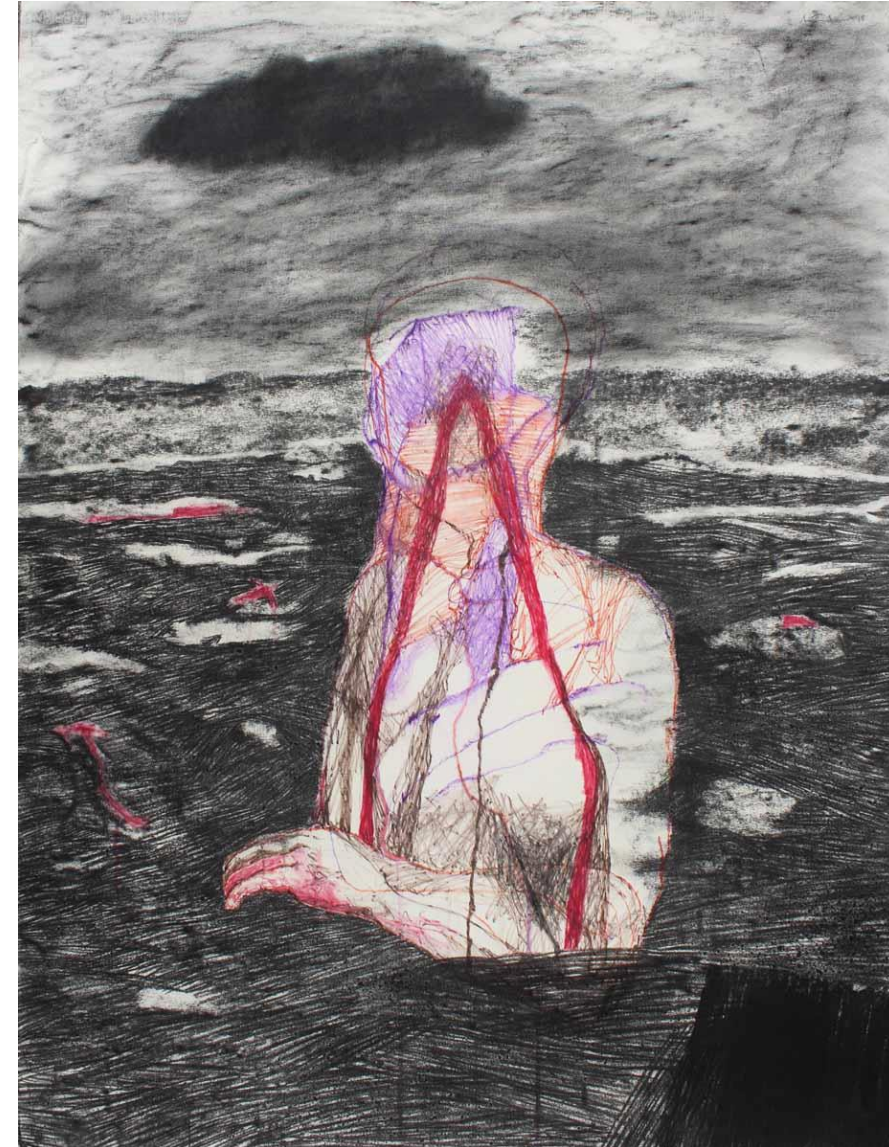
Charcoal, water colour and dry pastel
on paper
47 x 36 in
2018



R

Wasteland 2

Water colour and charcoal on paper
47 x 36 in
2018

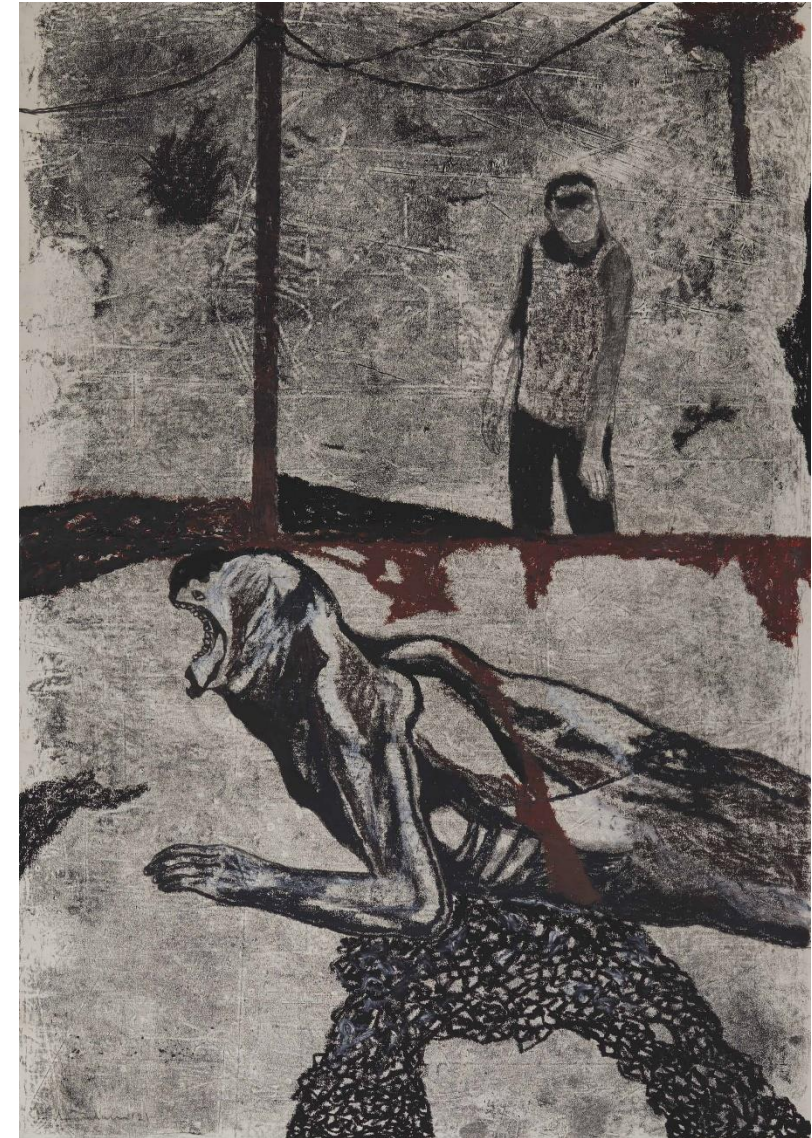


Painting

Untitled
Oil on paper
40 x 28 in.
2021
Kolkata



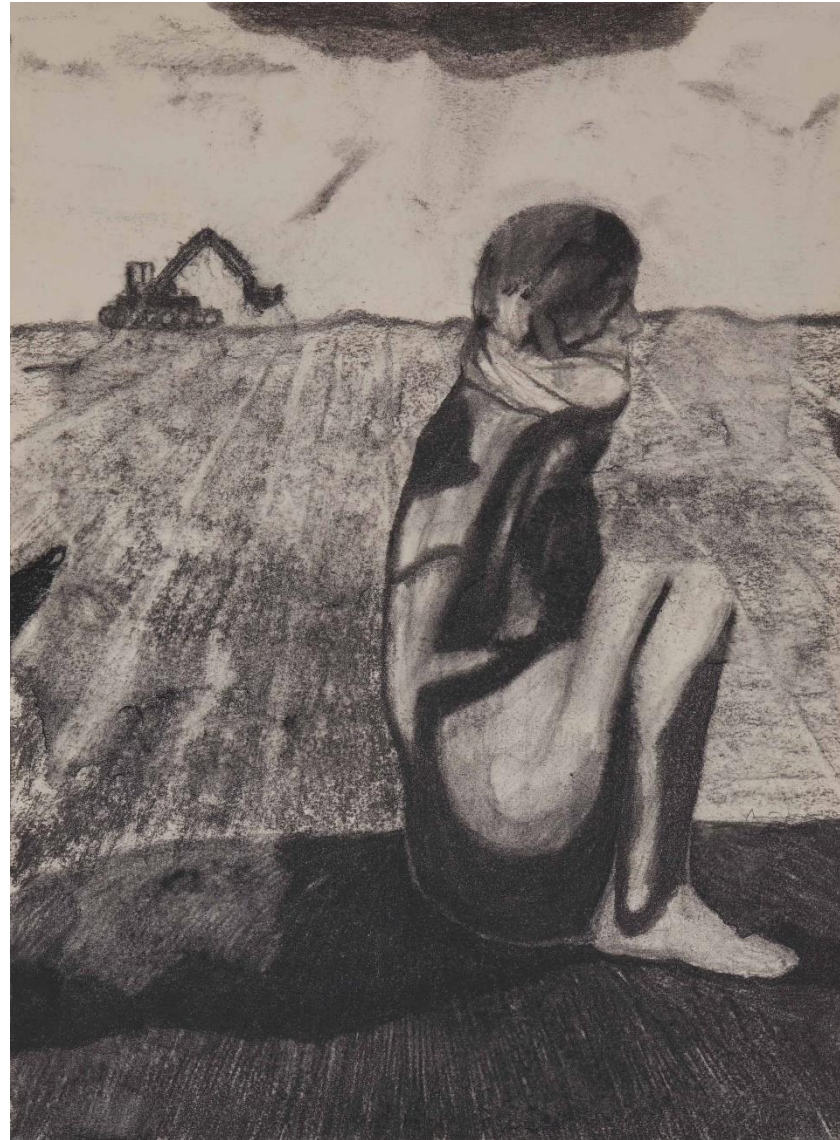
Detail



Drawing

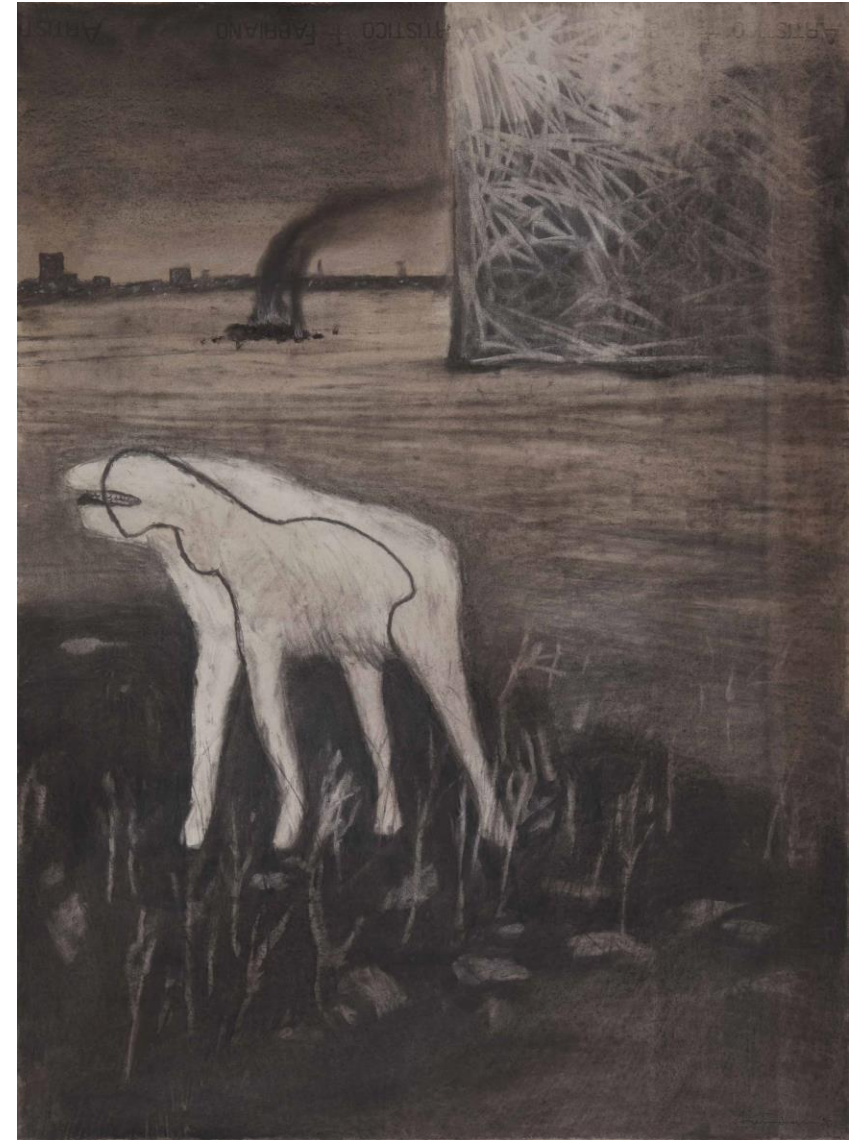
L

Untitled
Charcoal on paper
29.8 x 22 in.
2020
Kolkata



R

Untitled
Charcoal on paper
30.4 x 22 in.
2020
Kolkata

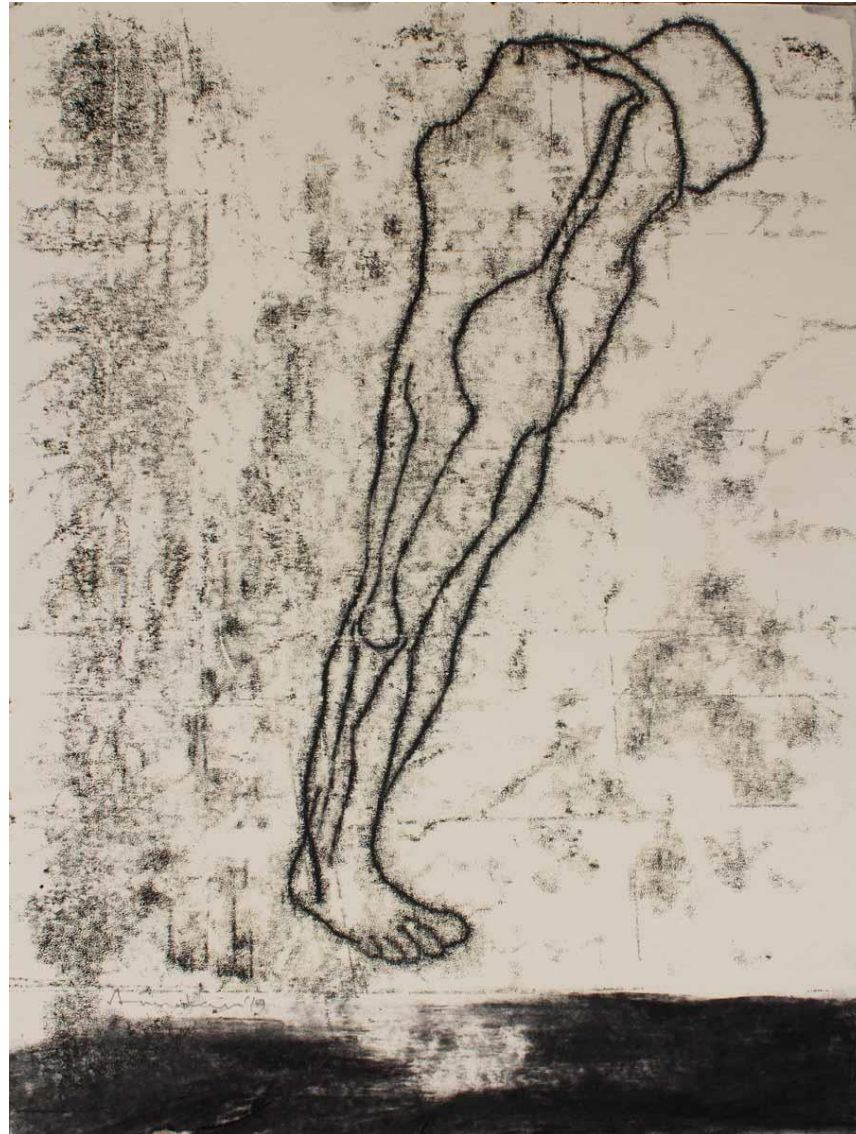


Drawing

L

Drawing 1

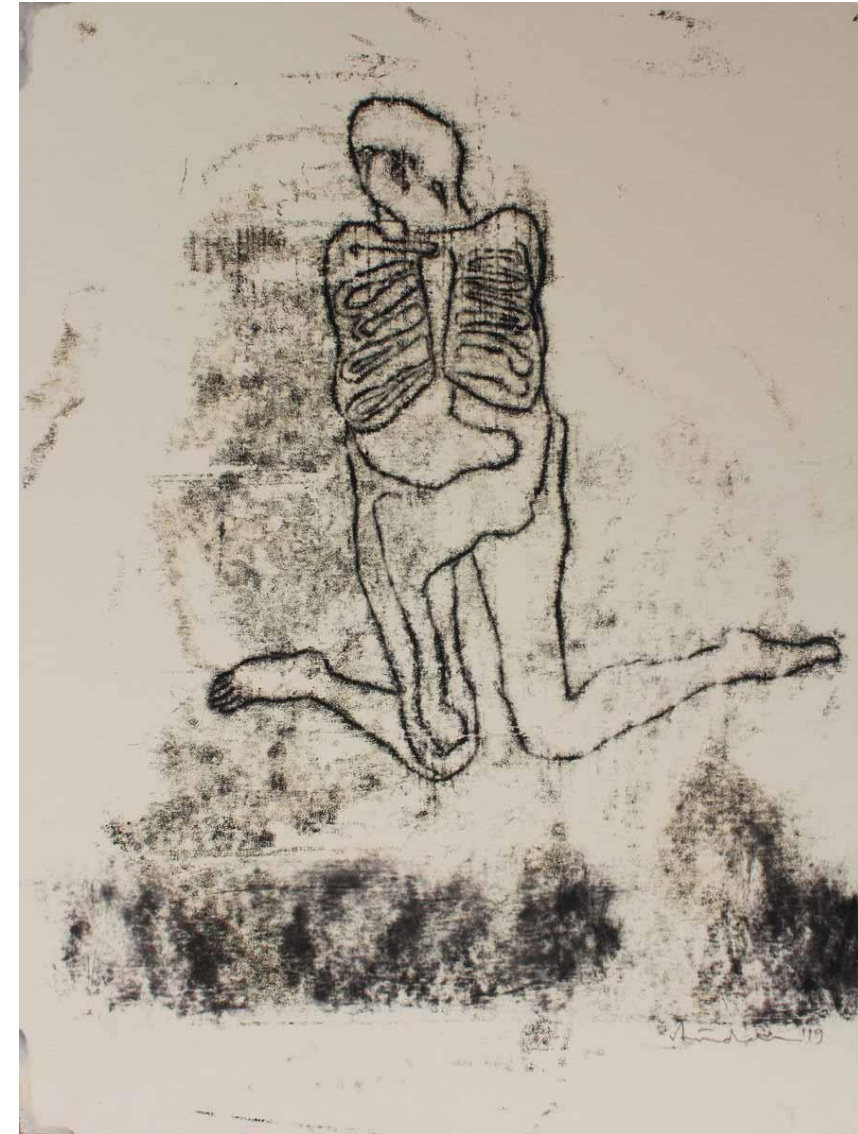
Oil and charcoal on paper
19 x 14 in
2019



R

Drawing 2

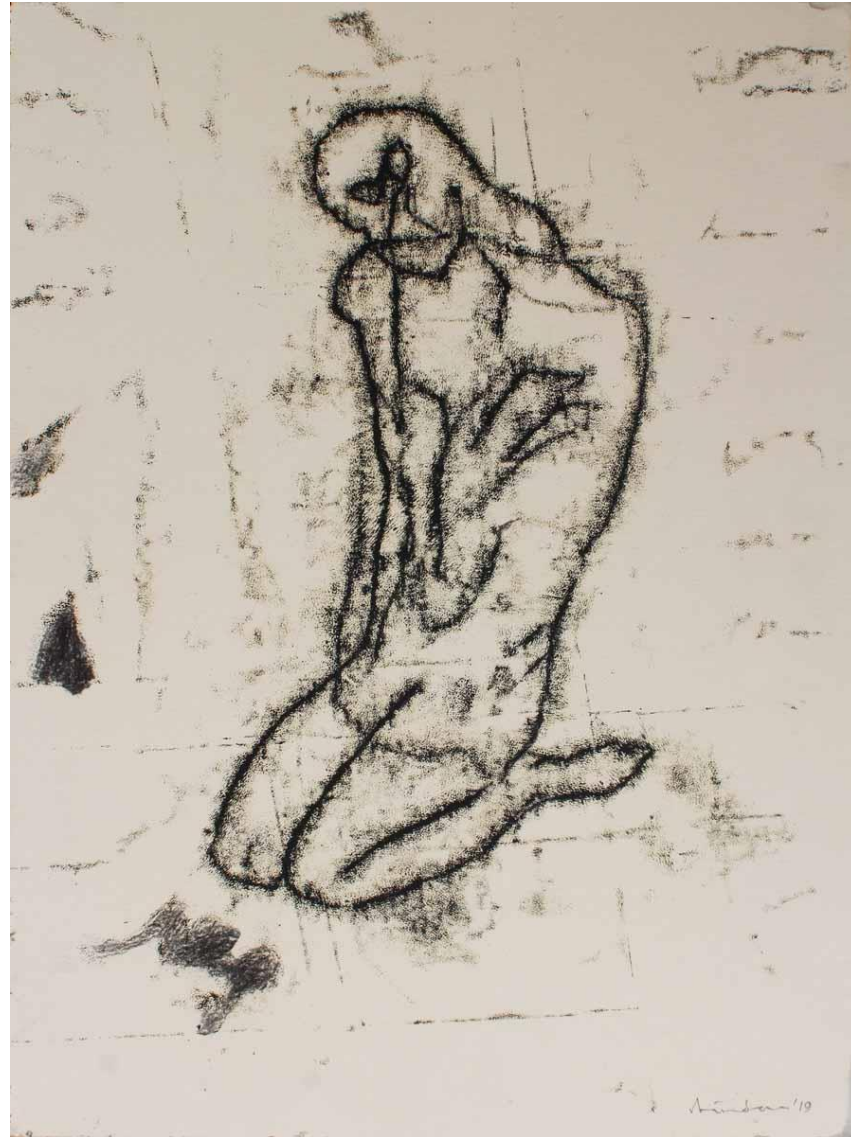
Oil and charcoal on paper
19 x 14 in
2019



Drawing

L

Drawing 4
Oil and charcoal on paper
19 x 14 in
2019



R

Drawing 6
Oil and charcoal on paper
20 x 14 in
2019



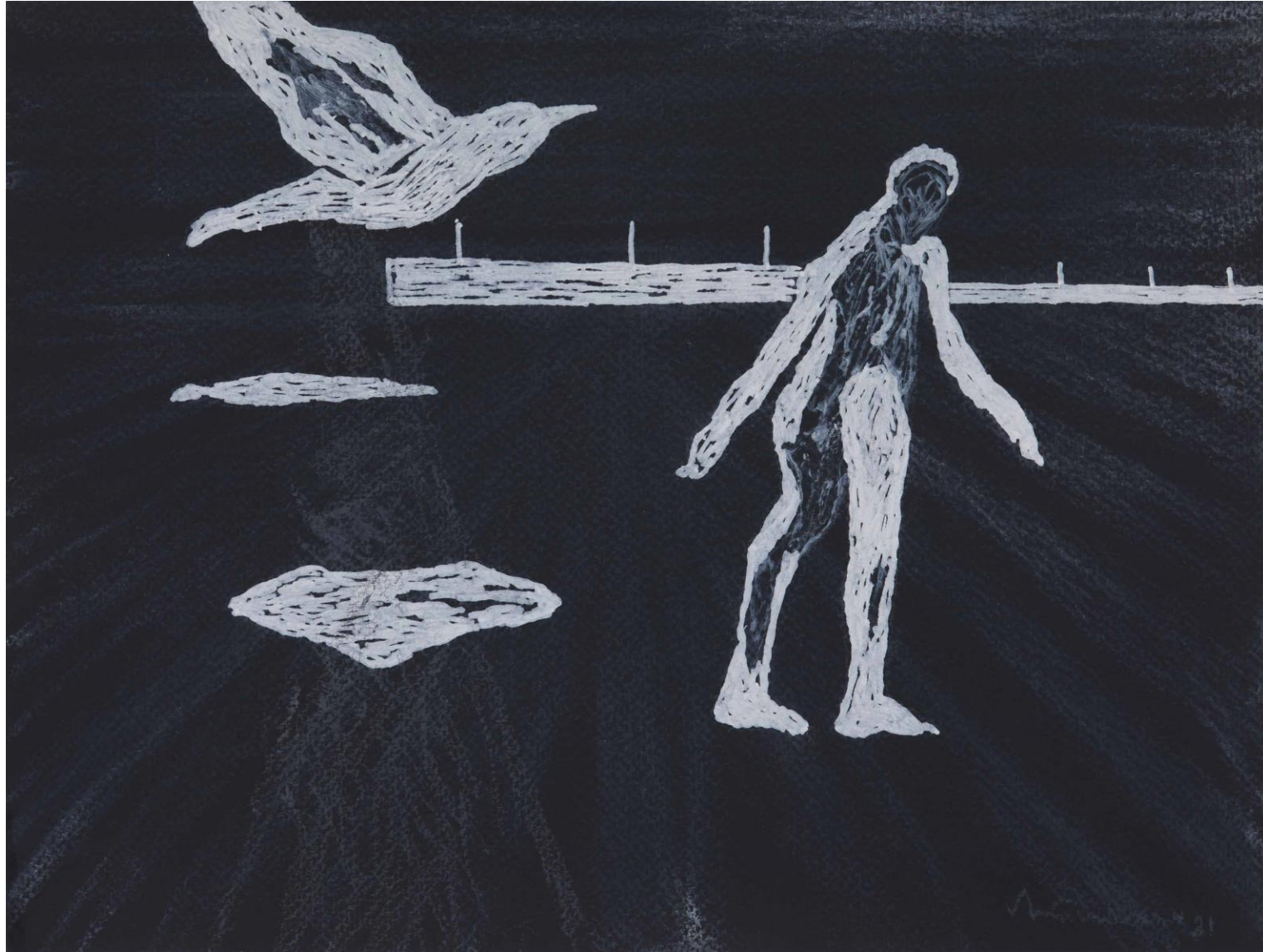
Drawing

Untitled
Charcoal on paper
22 x 30 in.
2021
Kolkata



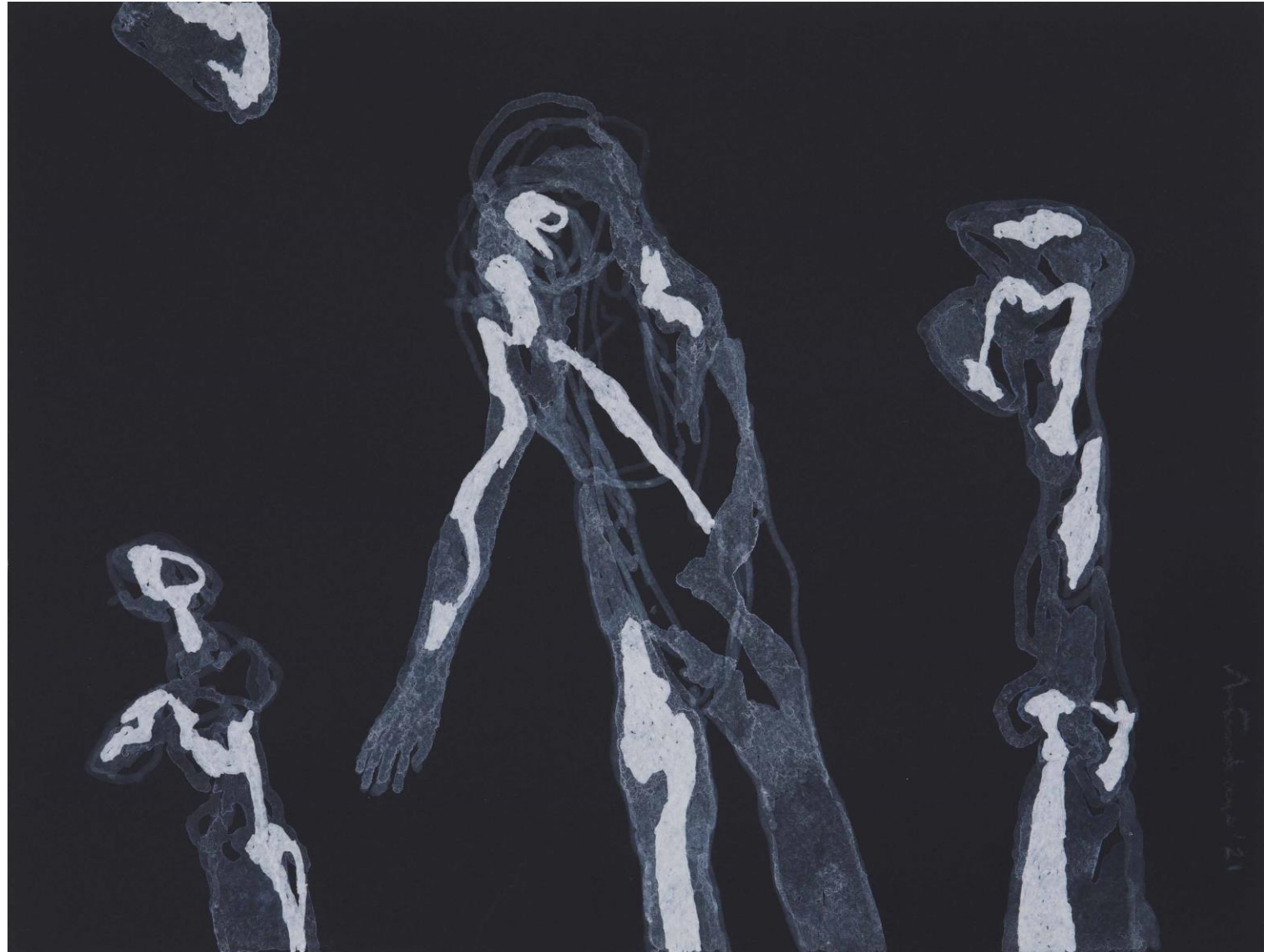
Painting

Untitled
Acrylic, marker and dry pastel on paper
9 x 12 in.
2021
Kolkata



Painting

Untitled
Acrylic and marker on paper
9 x 12 in
2021



Exhibition Images



Constellations
Installation View, Emami Art, Kolkata

Brief Bio

Born in West Bengal, Arindam Chatterjee studied painting at the Government College of Art & Craft, Kolkata and Kala Bhavana, Visva-Bharati, Santiniketan and has since exhibited nationally and internationally. A prominent abstract painter in the late 1990s and 2000s, he turned to figurative art to engage more directly with the social and political life of society.

He has been the subject of several solo exhibitions including *The Lightning Should Have Struck Me: Recent Work by Arindam Chatterjee* at Gandhara Art Gallery (Kolkata 2015); *Recent Work by Arindam Chatterjee* at Akar Prakar (Kolkata 2012); *Monologues* at Tao Art Gallery (Mumbai 2006); *The Airborne Stories* at Chitrakoot Art Gallery (Kolkata 2005) and many others.

His work has been featured in the group exhibitions like *Constellations* at Emami Art (Kolkata, 2020), *Black Hole Project* at AM (Art Multi-Discipline) Art Gallery (Kolkata 2018); *ENVISION: An Exhibition of Paintings and Sculptures by the Artists of Open Window* at Birla Academy of Art and Culture (Kolkata 2014); *Beneath The Black* at Gandhara Art Gallery (Kolkata 2012); *Remixing Charm: Post Painterly Art of the Local* at Aakriti Art Gallery (Kolkata, 2015), and XI Triennale India (New Delhi, 2005).

He is the recipient of Navonmesha Puraskara given by the Parents Information Centre (2003) and the National Cultural Scholarship and Junior Research Fellowship from the Government of India. He was awarded H K Kejriwal Memorial Award in 1997 and won Silver Prize in the Drawing and Design Exhibition in Kyoto, Japan.

He lives and works in Kolkata.



Photo Courtesy : Shrinidhi Das, Emami Art

EMAMI ART

Kolkata, India

Emami Art, Kolkata, is a leading contemporary art gallery and space for cultural production. Based in Kolkata, India, the gallery focuses on a future-forward, complex, multi-dimensional approach. It is steadfast in advocating for emerging, mid-career and established artists and engaging with contemporary and historical material. The gallery also aims to create dynamic, wide-ranging registers of exhibition-making and viewing.

In addition to hosting exhibitions and participating in national and international events and fairs, Emami Art has diverse parallel programming. Emami Art has launched the **EA Locus in Focus** to provide a voice to local and regional communities through ongoing short and long-term projects. **EA Incubator & Learning** integrates both the physical and virtual interfaces. It helps the arts community free access to regular mentorship programs, workshops, residency opportunities and innovative educational activities that facilitate artistic development, help build collaborative networks and provides a supportive environment for emerging talent. As a centre of excellence, Emami Art identifies as a platform rather than just a facility.

Critical discourses, interactions, documentation and exchange are also essential to our mandate. Under the umbrella of **EA Discourse**, we develop and produce original writing, periodicals and catalogues that focus on artistic, creative and pedagogical materials. As part of our knowledge-making and archiving process, our regular lineup of talks, seminars, panel discussions and conversations with artists, curators and key partners is helping to establish a safe space for critical engagement.

Emami Art has adopted the inclusive, symbiotic framework, where profitability supports sustainable resource regeneration and public service. The gallery is a green building and strictly maintains free access to all policy. Deeply committed to promoting a regional, national and international agenda through innovative and alternative programming, emphasis on community and socially relevant engagements, institutional partnerships and more via a multi-year vision for the future, Emami Art is a catalyst of change, research, innovation and inclusivity.

