

# EMAMI ART

**Santanu Debnath**

Portfolio of select works

---

Painting

*Glimpses of the Rare*  
Watercolour on paper  
11.61 x 16.53 in.  
(29.5 x 42 cm.)  
2021, Kolkata  
Signed in English (reverse)  
C7040



## Brief Description

---

Santanu Debnath is an emerging artist hailing from a small village in West Bengal. A recent graduate of the Government College of Art and Craft, Kolkata, he works meticulously, showing the patience of a miniaturist. His works, revealing many shades of the everyday life of rural Bengal, include, besides the human beings, rustic nature and animals.

His recent series of watercolours reflect on the ways in which the village had changed during the Covid-19 pandemic and the subsequent lockdowns. Drawing from real life, memories, and imaginations, Debnath's watercolours create intimate narratives around familiar themes – such as childhood, family life, farming or grazing cattle in a vast landscape. There are pauses and lingering moments of stillness that are characteristics of Santanu's watercolours, where anxiety and patience nestle together. His other works are also characterized by his preference for detailing and an insider's perception of rural life. Rooted in naturalism, the empiricism of his paintings is overlaid with his poetic vision, personal memory, desires and sense of humour.



*A Pair of Farmers*

Watercolour on paper

15.74 x 35.23 in (40 x 89.5 cm.)

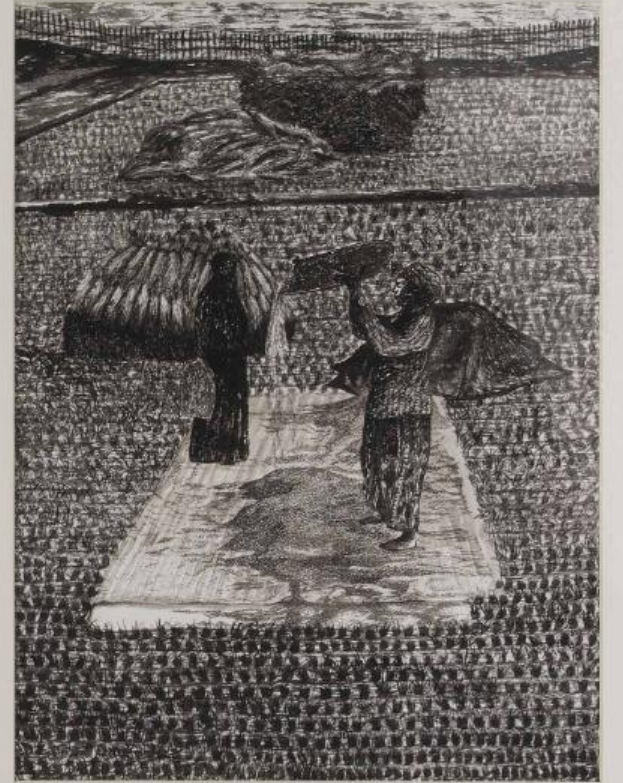
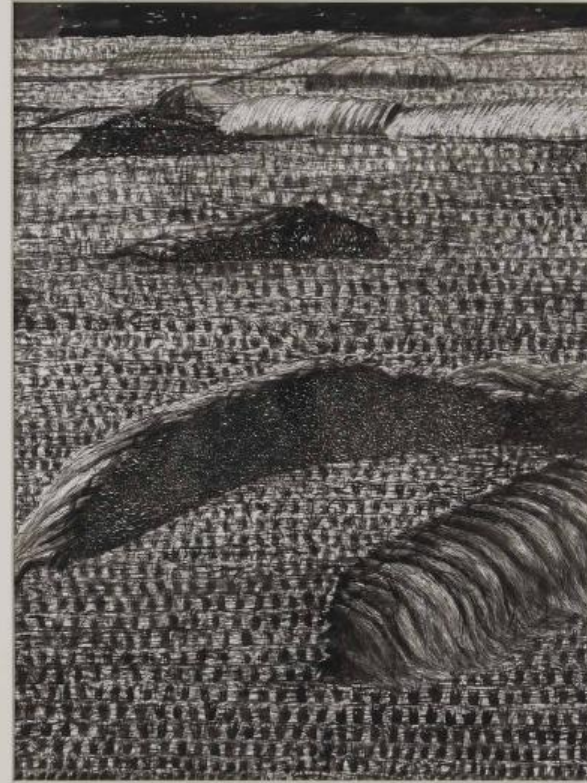
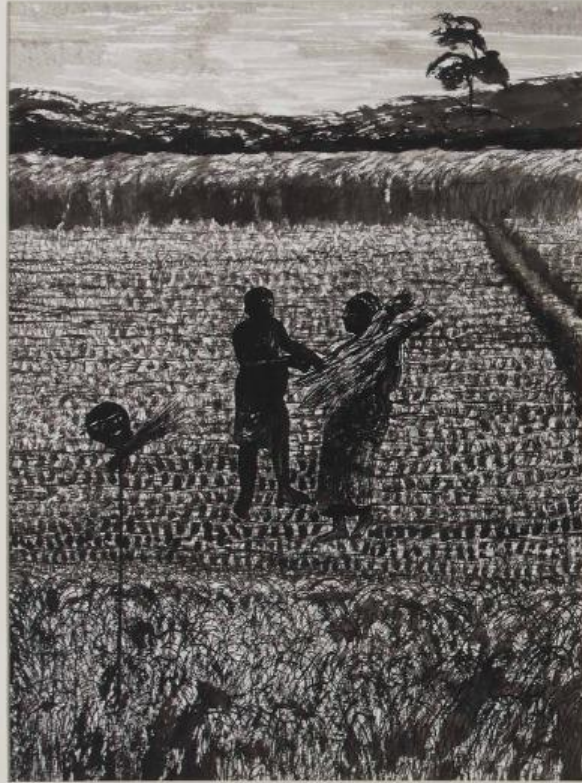
overall

Suite of 3 works

2022, Kolkata

Signed in English (on the reverse)

C7298



*Convalesce*

Watercolour on paper

12 x 16 in.

(30.48 X 40.64 cm.)

2021, Kolkata

Signed in English (reverse)

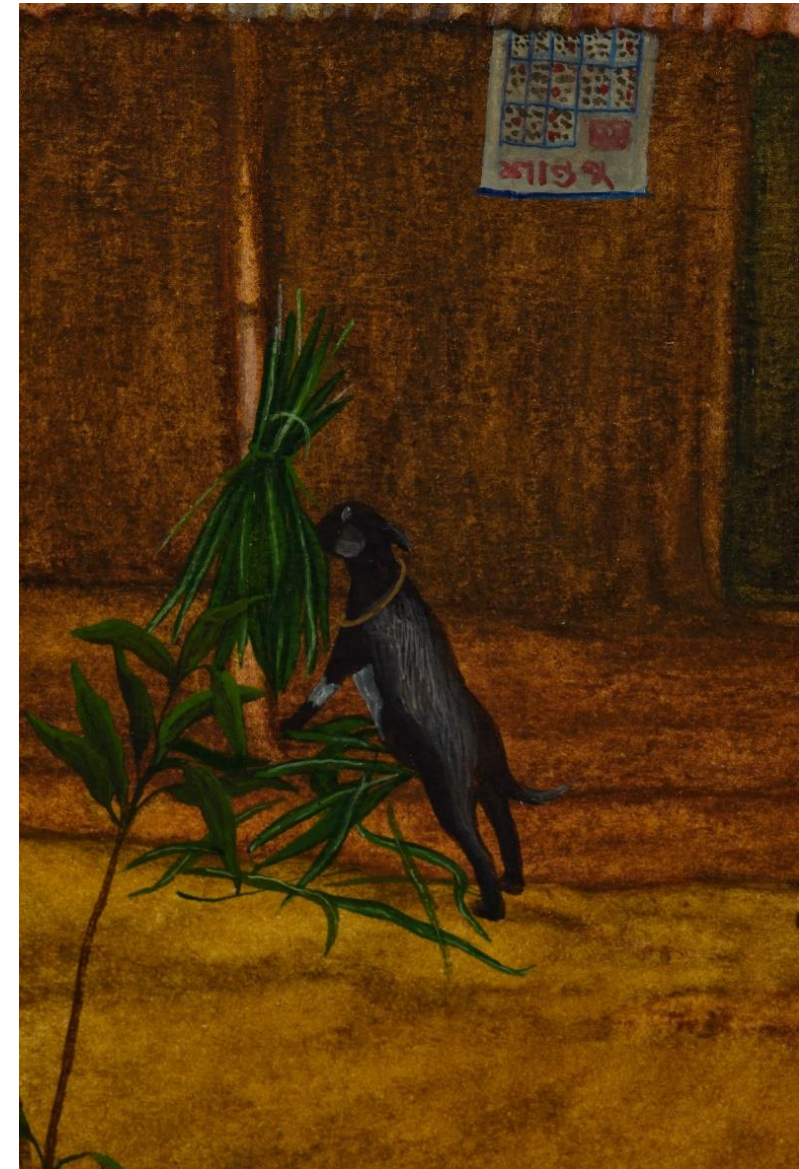
C7041



Painting

*Convalesce*  
Detail

His paintings, created in style akin to hatching/cross-hatching, have the sensibility usually present in detailed naturalistic drawings. It draws one closer to the pictures, the people and their lives, the murmur of leaves, the rustle of the grass, animals' habits, and so on. His paintings, however, do not narrate stories. Instead, they depict moments suspended in time. The alienation of modern city life infuses into his ways of seeing his village – a quiet solitude.



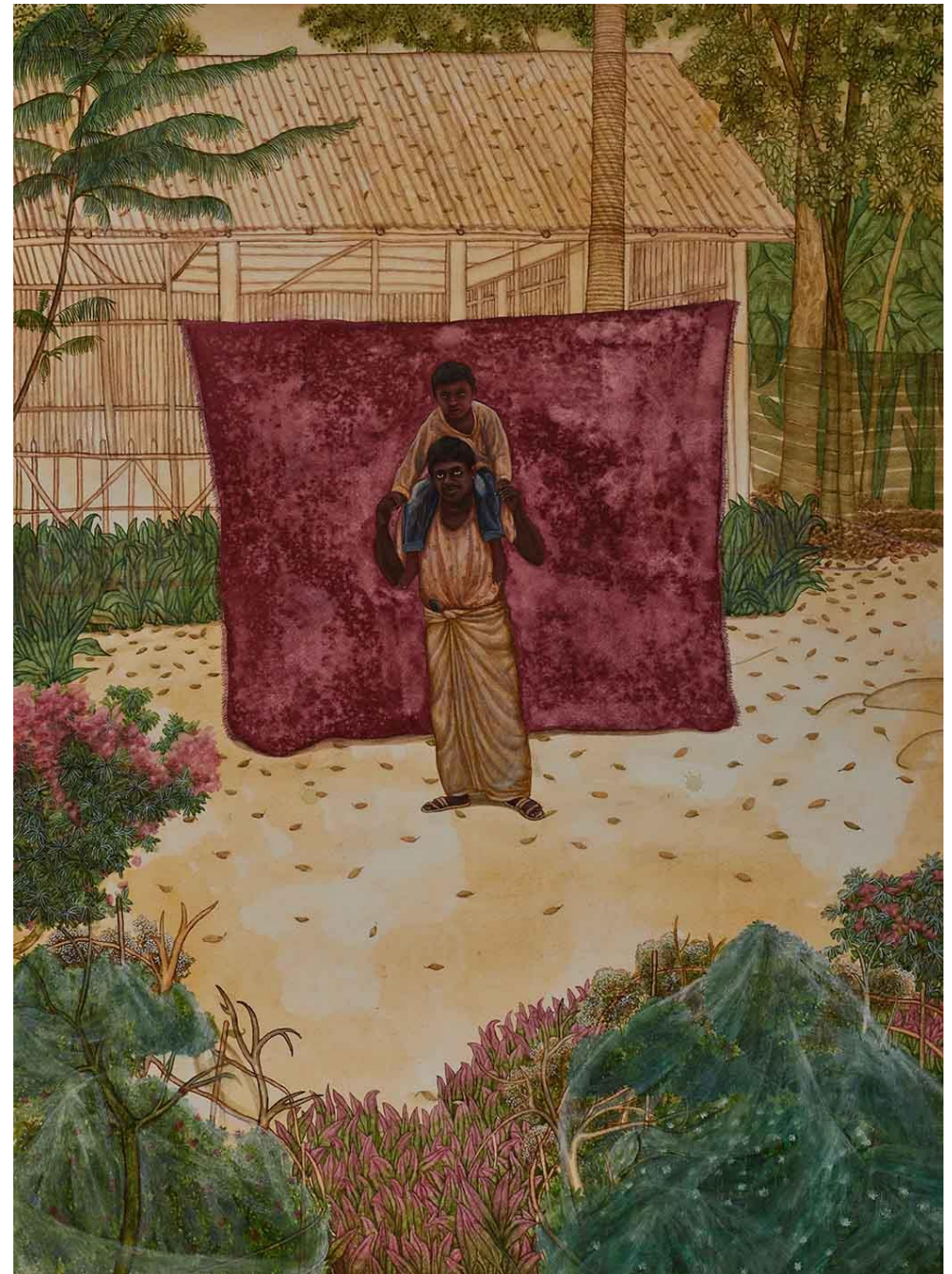
Painting

*Convalesce*  
Installation view



---

*Paradise*  
Watercolour on paper  
30 x 22 in.  
2021, West Bengal  
Signed in English (lower right  
on the reverse)  
C6517



Painting

*Paradise*  
Detail

With the closing down of the schools and colleges due to the pandemic lockdowns and subsequent restrictions, students left the campus and returned home. As Santanu returned to Betpukur during the monsoon, he could not but enjoy the simple beauty of his village, and the lush greens flooded his palette. He noticed families coming together, the return of the lost games, melancholic leisure amidst the acute financial crisis and loss of work and education. The beauty and peace of the pastoral life thus seeped into the anxieties of modern life. Pensive and poignant, this series of paintings holds onto this wavering pause, assured of its temporality, tinged with a sense of both loss and longing.





Painting

*Paradise*  
Detail



---

*Glimpses of the Rare*  
Watercolour on paper  
11.61 x 16.53 in.  
(29.5 x 42 cm.)  
2021, Kolkata  
Signed in English (reverse)  
C7040

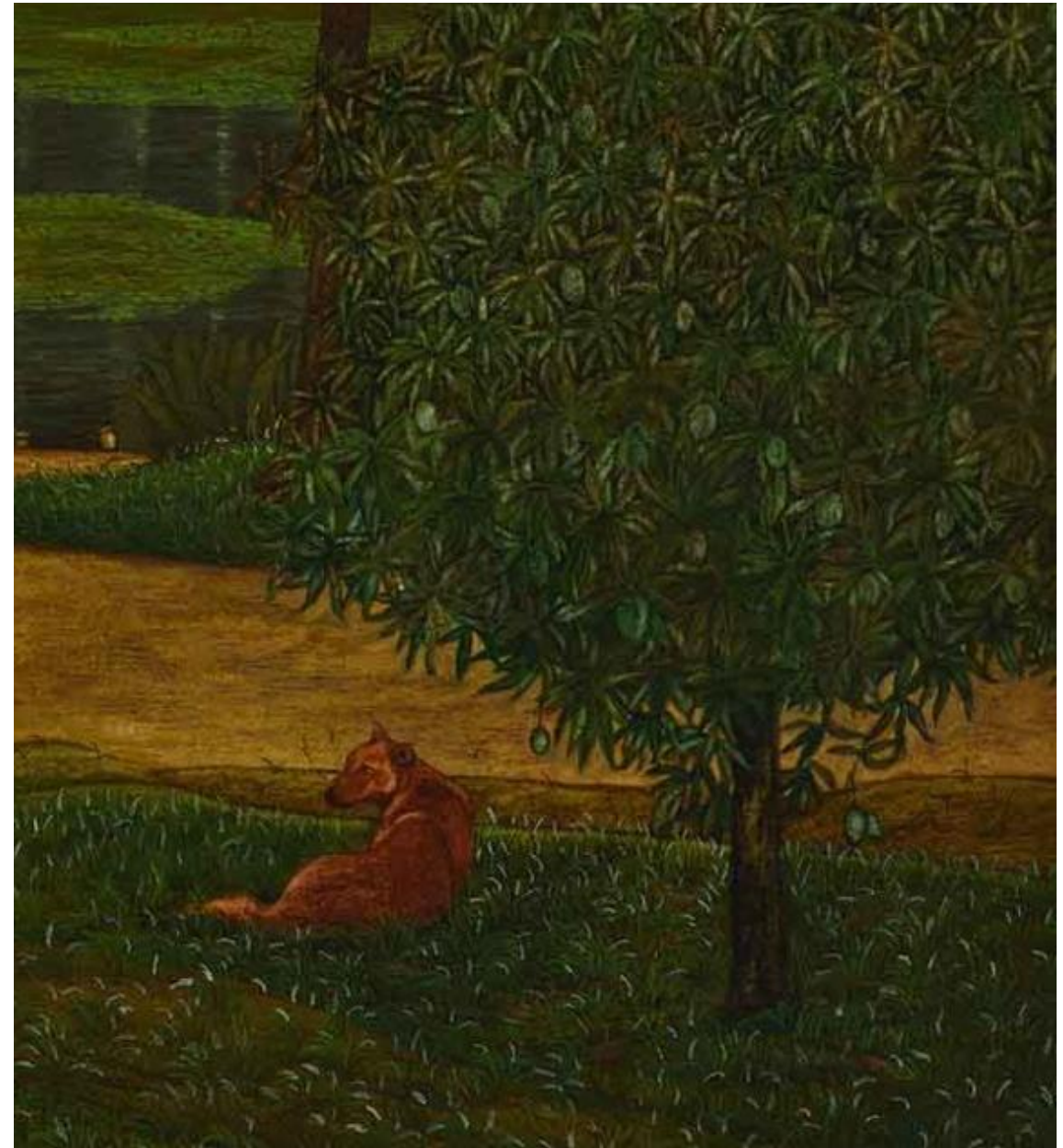


Painting

---

*Glimpses of the Rare*  
Detail

Santanu Debnath is the only painter in his village. Working alone in his studio, he merges visions, memories, and imaginations spontaneously in the compositions. His fine, delicate brushstrokes resemble, with patient repetition, the patience of nature itself.



---

*Grope*

Watercolour on paper

22 x 30 in. (55.88 x 76.2 cm.)

2021, West Bengal

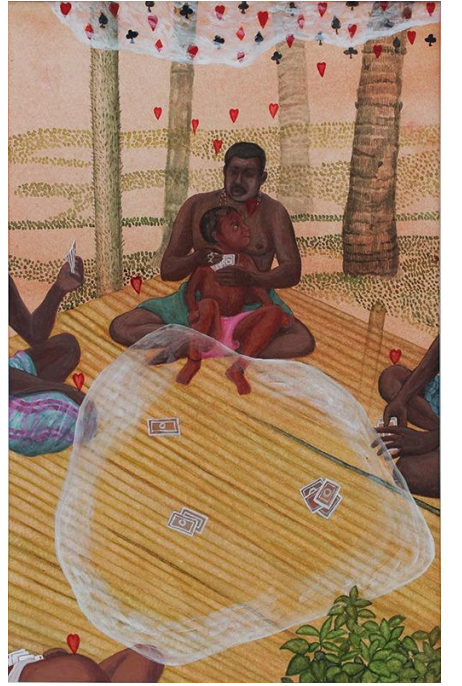
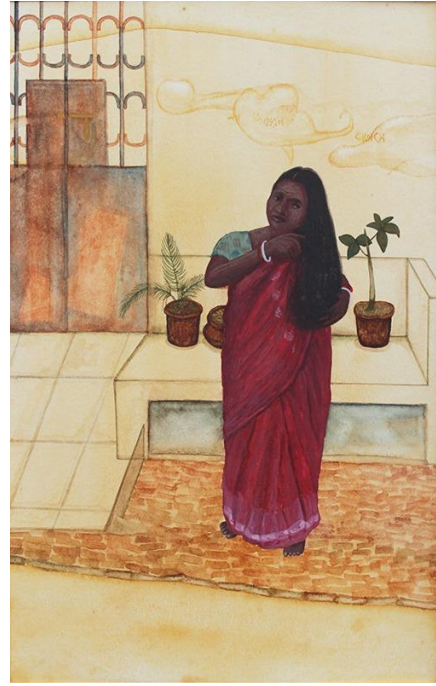
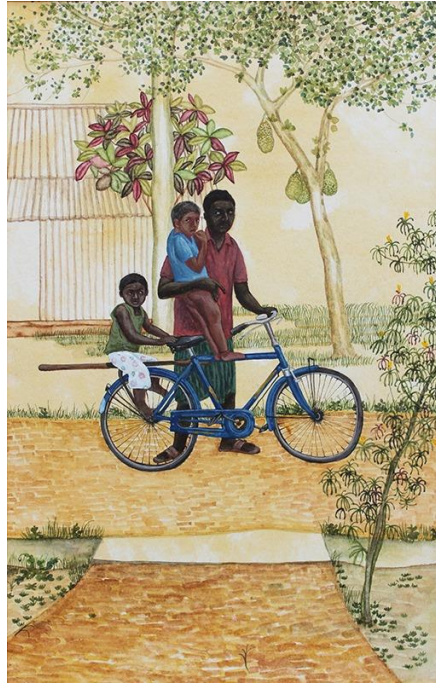
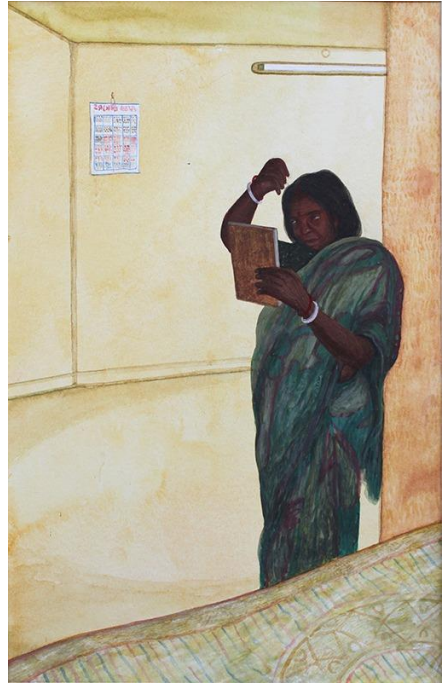
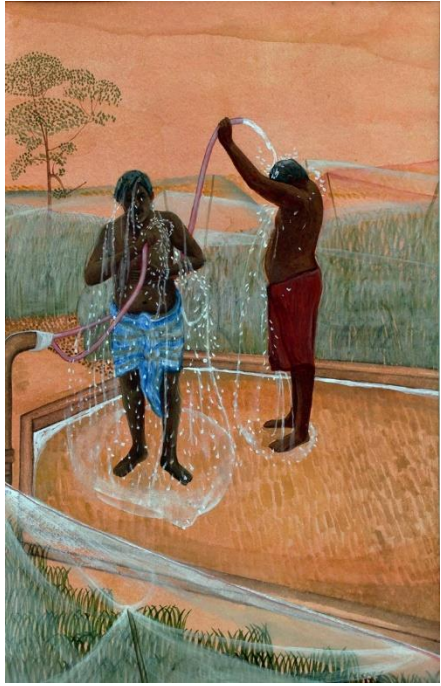
Signed in English (lower right  
on the reverse)

C6516



Grove  
Detail

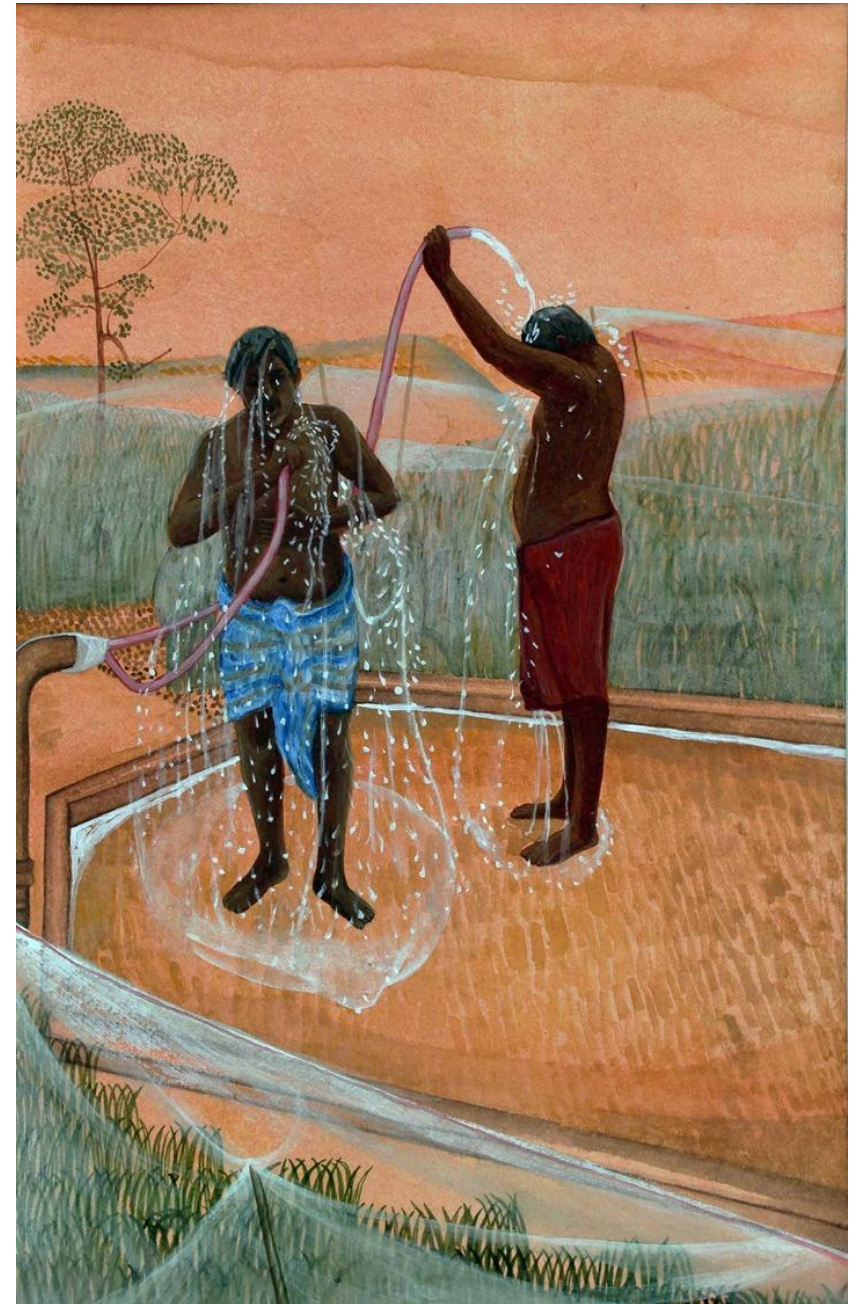




*Countryside I, II, III, IV, V*  
Watercolour on paper  
10.82 x 6.69 in. each  
(27.48 x 16.99 cm. each)  
2020, West Bengal  
Signed in English (reverse)  
C6414, C6446, C6447, C6448, C6449

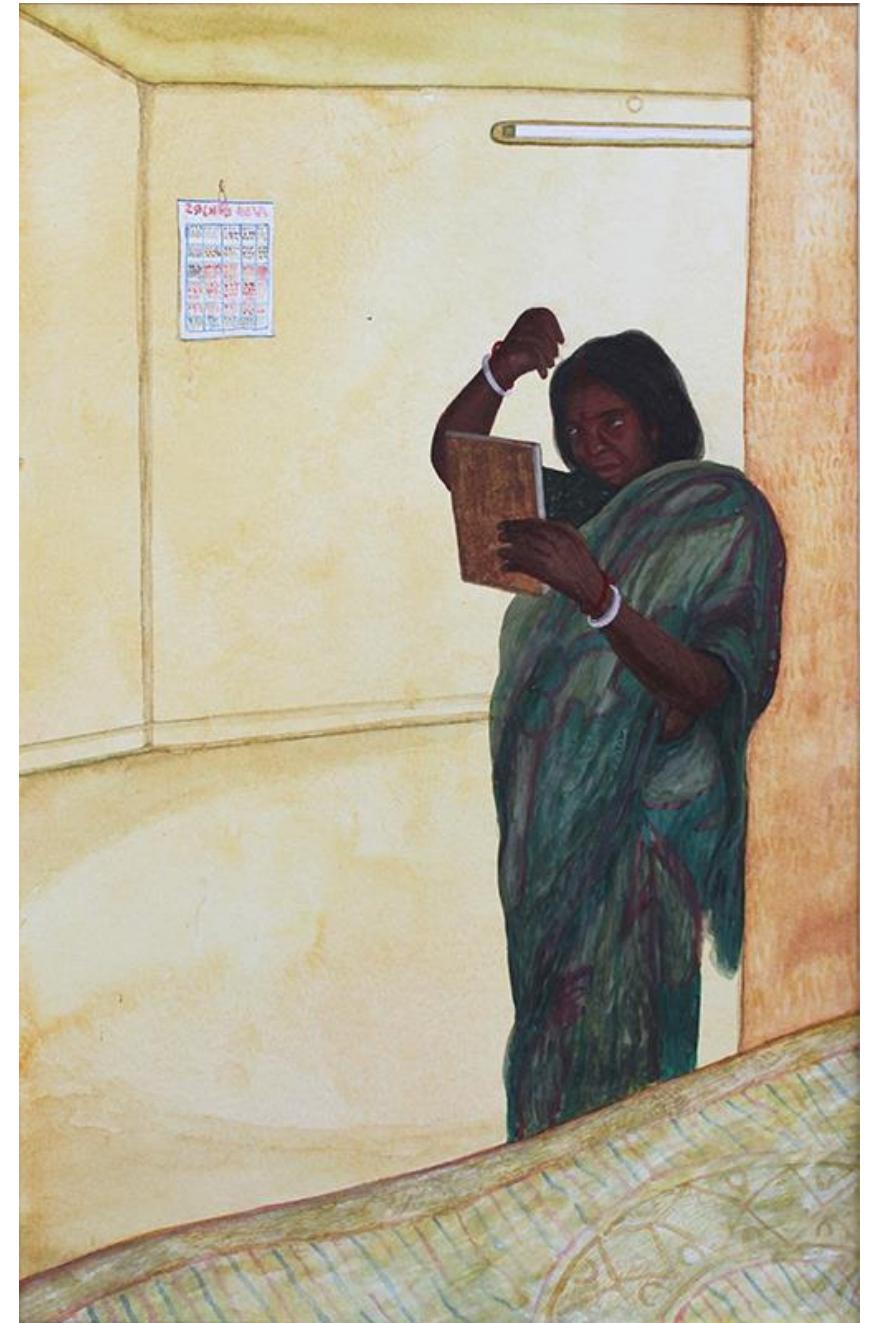
---

*Countryside I, II, III, IV, V*  
Watercolour on paper  
10.82 x 6.69 in. each  
(27.48 x 16.99 cm. each)  
2020, West Bengal  
Signed in English (reverse)  
C6414



---

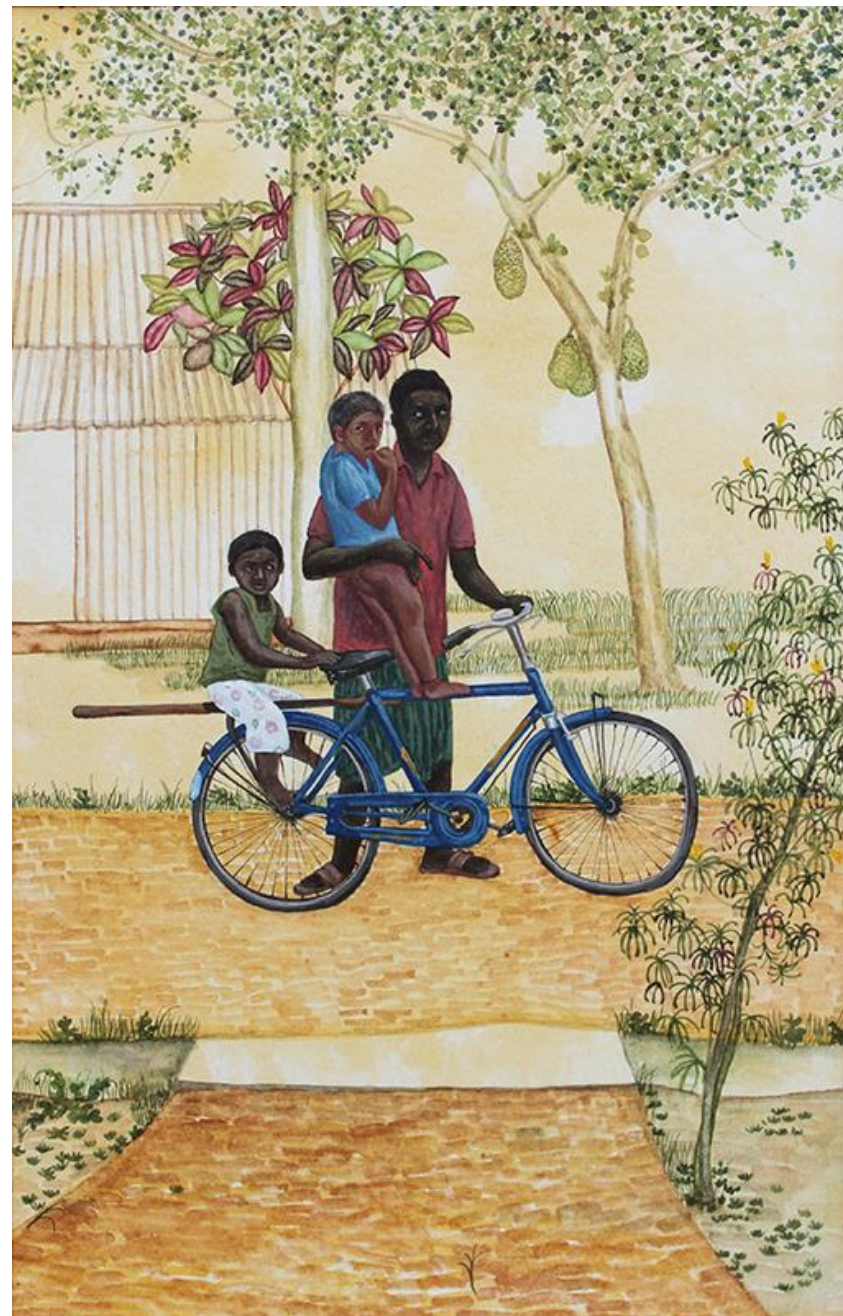
*Countryside I, II, III, IV, V*  
Watercolour on paper  
10.82 x 6.69 in. each  
(27.48 x 16.99 cm. each)  
2020, West Bengal  
Signed in English (reverse)  
C6446





---

*Countryside I, II, III, IV, V*  
Watercolour on paper  
10.82 x 6.69 in. each  
(27.48 x 16.99 cm. each)  
2020, West Bengal  
Signed in English (reverse)  
C6447



Painting

*Countryside I, II, III, IV, V*  
Detail



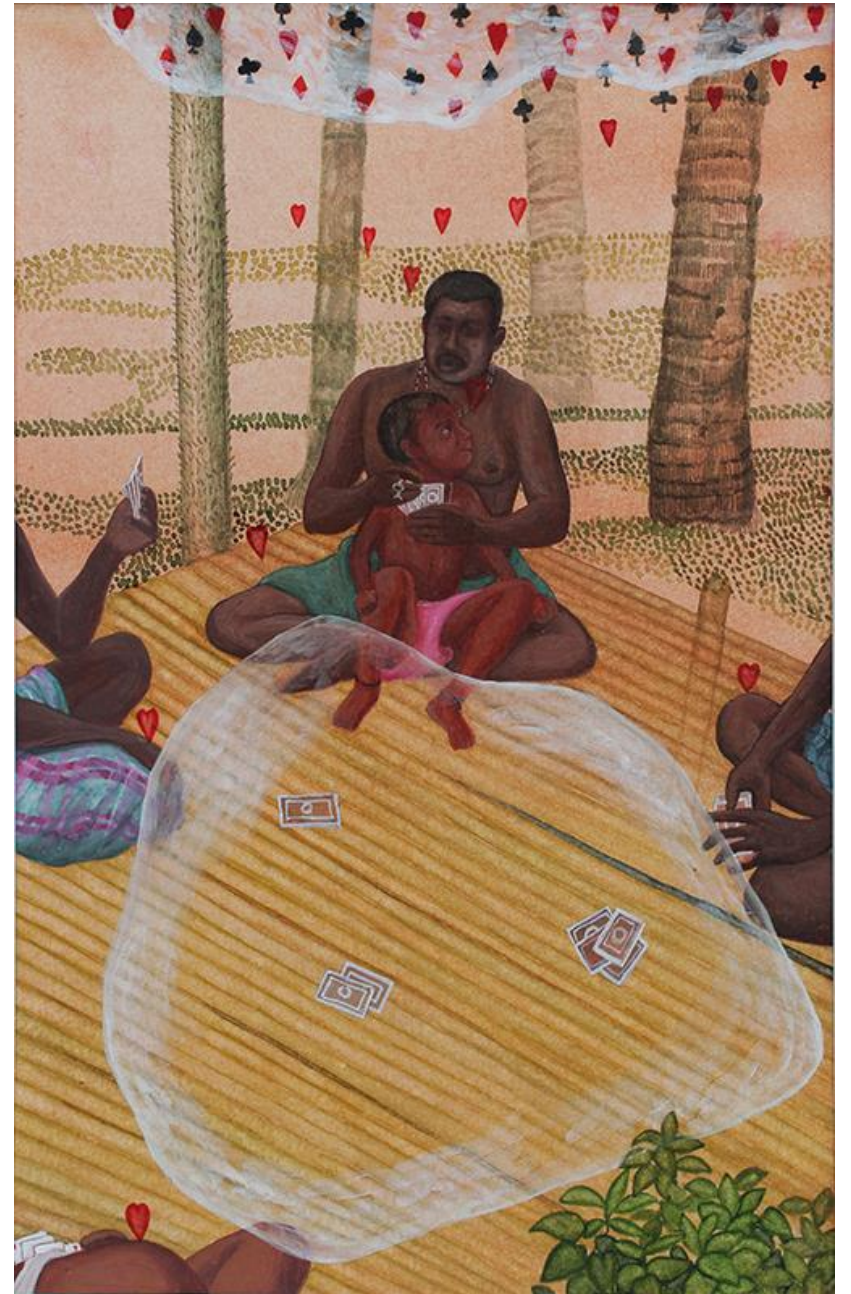
*A Simple Life 2021*, his recent series of watercolours on paper exhibited at Emami Art (online), reflects on the ways in which the village had changed during the Covid-19 pandemic and the subsequent lockdowns. Drawing from real life, memories, and imaginations, Santanu's watercolours create intimate narratives around familiar themes – such as childhood, family life, farming or grazing cattle in a vast landscape.

---

*Countryside I, II, III, IV, V*  
Watercolour on paper  
10.82 x 6.69 in. each  
(27.48 x 16.99 cm. each)  
2020, West Bengal  
Signed in English (reverse)  
C6448



*Countryside I, II, III, IV, V*  
Watercolour on paper  
10.82 x 6.69 in. each  
(27.48 x 16.99 cm. each)  
2020, West Bengal  
Signed in English (reverse)  
C6449

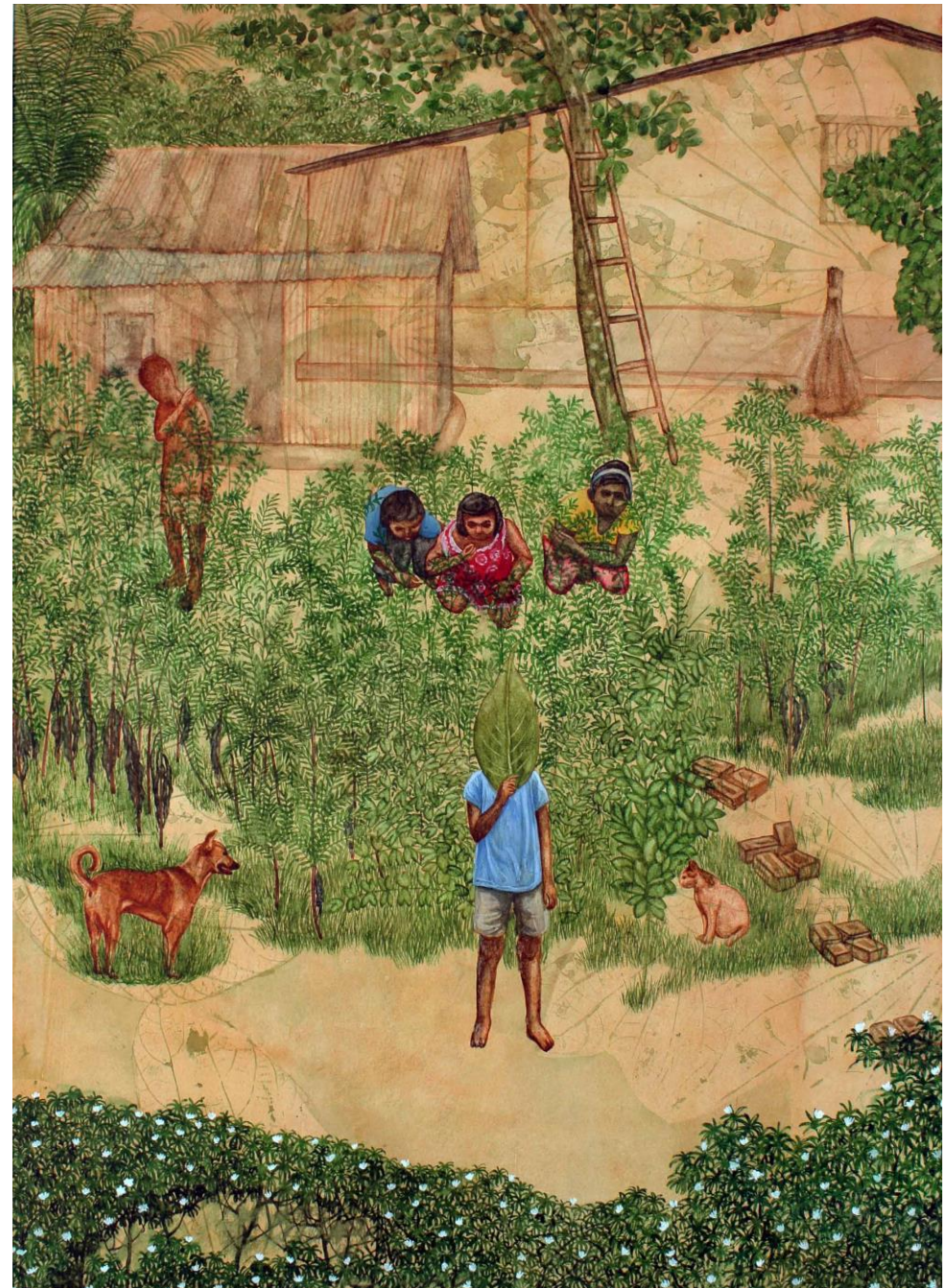




*Living of Rural Bengal*  
Watercolour on paper  
Suite of 3 works  
2020, West Bengal  
C6415

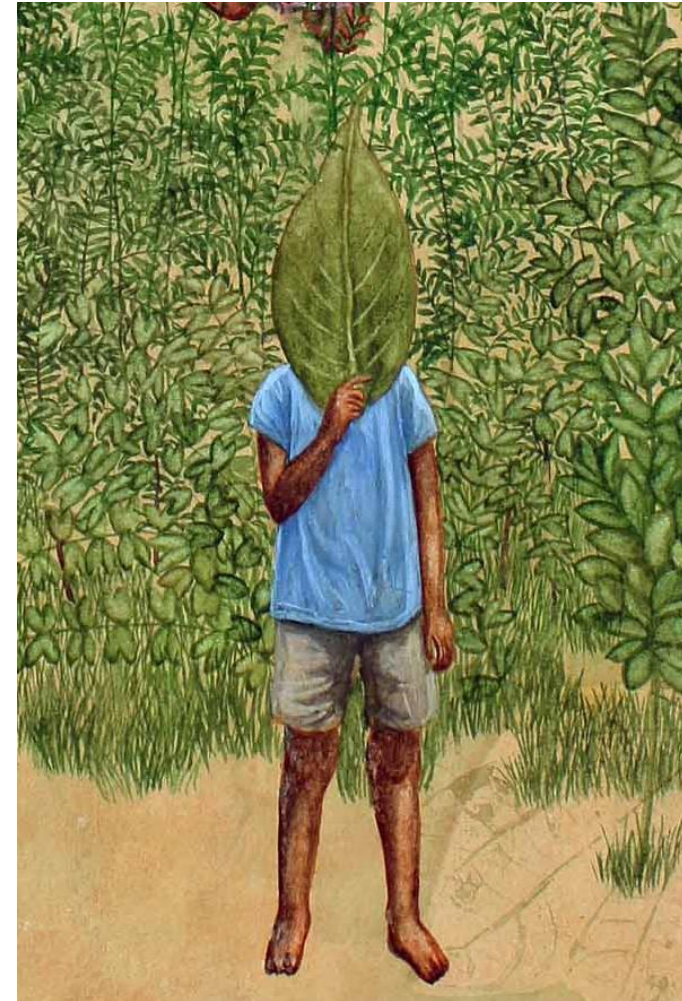
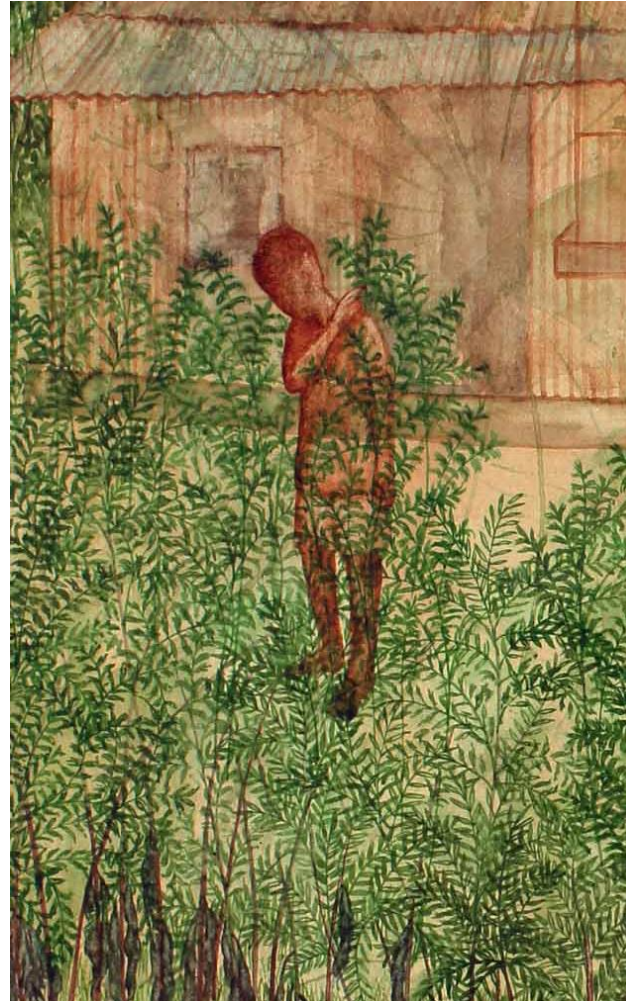
---

*Living of Rural Bengal*  
Watercolour on paper  
16.53 x 11.61 in. (42 x 29.5 cm.)  
2020, West Bengal  
Signed in English (on the reverse)  
C6415A



Painting

*Living of Rural Bengal*  
Detail



Portraying scenes from a village, Betpukur, where he hails, the paintings reflect his intimate ways of seeing, revealing the subtle layers of the idyllic rural life.

---

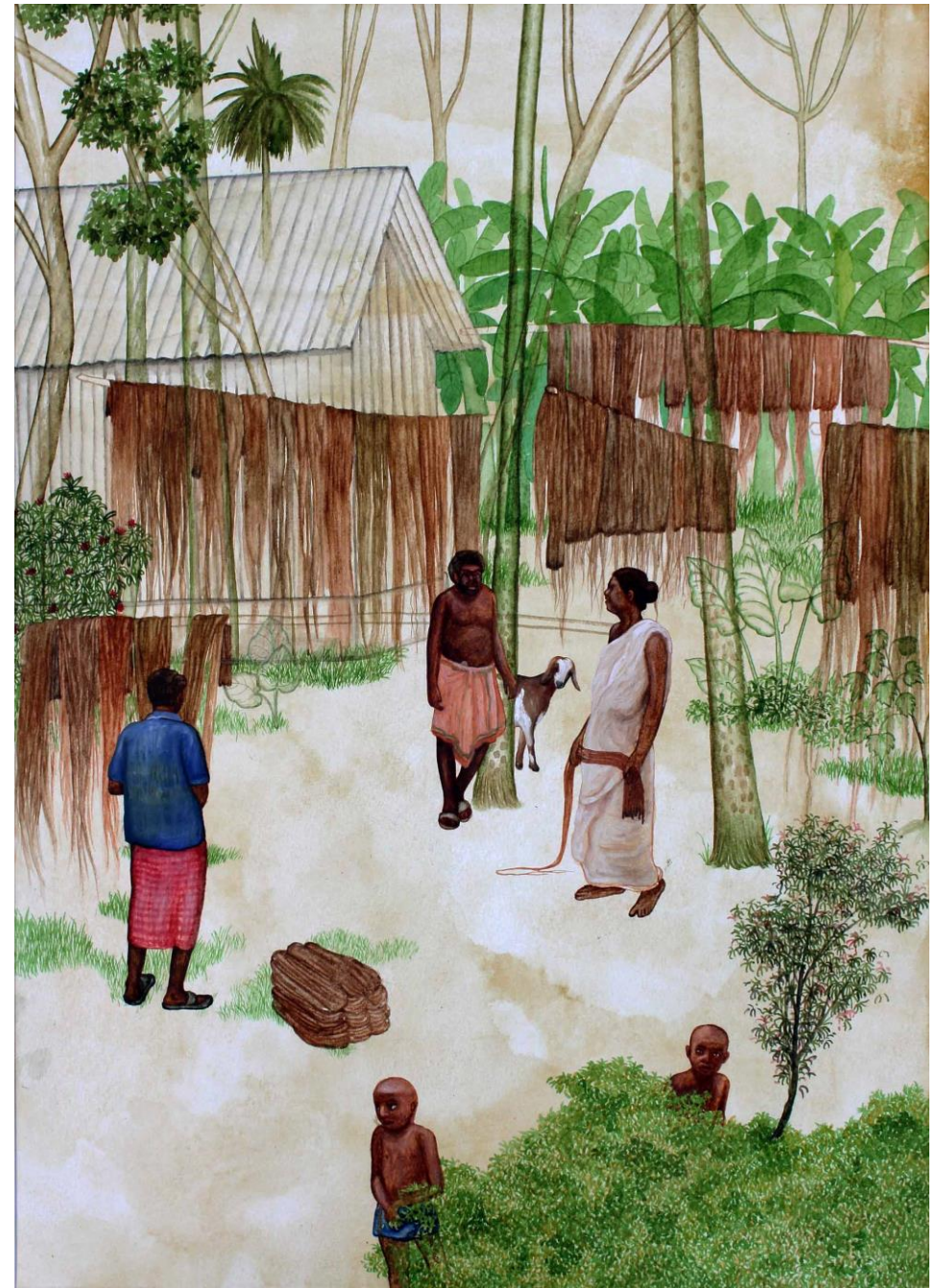
*Living of Rural Bengal*  
Watercolour on paper  
13.77 x 11.02 in. (35 x 28 cm.)  
2020, West Bengal  
Signed in English (on the reverse)  
C6415B





---

*Living of Rural Bengal*  
Watercolour on paper  
16.33 x 11.61 in. (41.5 x 29.5 cm.)  
2020, West Bengal  
Signed in English (on the reverse)  
C6415C



---

*Vasundhara*

Watercolour on paper

18.11 x 25.59 in. (46 x 65 cm.)

2020, West Bengal

Signed in English (on the reverse)

C6416



## Brief Bio

---

Born in a village in West Bengal in 1995, Santanu Debnath did his Bachelor's and master's in Painting from the Rabindra Bharati University and Government College of Art and Craft, Kolkata.

He was the subject of the online solo show *The Simple Life* at Emami Art, Kolkata and *After Cities Fall* at Nippon Gallery, Mumbai (2020).

He has participated in group shows *100 Yuva Sumbhava*, Raza Foundation (2022), *Imaginarium* at Emami Art, Kolkata (2021), GCAC Annual Exhibition (2019-2021), KCC Art Fair (2019); West Bengal State Academy, Kolkata (2018-19); ICAD Annual Exhibition, Kolkata (2015-2018); group show in the Institute de Chandannagar, Hooghly (2017); among others.

He has won Gita Das Award at GCAC Annual Exhibition (2019) and Certificate of Merit in the West Bengal State Academy Annual Exhibition (2018-19). He is the recipient of the prestigious Shilpacharya Zainul Abedin Scholarship (2020-2021).

Santanu Debnath lives and works in Kolkata.



*Courtesy of the artist and Emami Art*

## CV and Personal details

---

Birth year: 1995

Address: Vill -Betpukur, P.O. –Chakbamangoria, P.S. –  
Nadanghat, Dist –Purba Bardhaman, Pin –713513, West  
Bengal, India.

Email ID : [debnathsantanu1995@gmail.com](mailto:debnathsantanu1995@gmail.com)

Phone No: 7908192388

## Education

- Completed BFA in Painting from The Indian College of arts & Draftsmanship (Rabindra Bharati University) in 2018.
- Completed MFA in painting from Government college of Art & Craft, Calcutta (Calcutta University) in 2021.

## Exhibitions:

- Yuva Sumbhava by Raza foundation at Bikaner House, Delhi in 2022
- A Simple life solo show at Emami Art, Kolkata in 2021
- Imaginarium at Emami art, Kolkata in 2021
- Commemorating 71 at Fort William, Calcutta in 2021
- 54th Annual Exhibition of Birla Academy of Art and Culture, Kolkata in 2021
- Annual Show at Government College of Art & Craft, Calcutta in 2019-20 and 2020-21A Solo Show was displayed at the Nippon Gallery, Mumbai in 2020
- Annual Exhibition of Academy of Fine Arts, Kolkata in 2019-20
- KCC Art Fair, Kolkata in 2019Annual show of West bengal state academy, Kolkata in 2018-19
- Annual Exhibition of The Indian College of arts & Draftsmanship in 2015, 2016, 2017 and 2018.

# EMAMI ART

## About

---

**Emami Art** is a contemporary art gallery based in the green purpose built Kolkata Centre for Creativity building in Kolkata, India. Promoting emerging, mid-career and established artists and engaging with contemporary and historical material, the gallery produces exhibitions of modern, contemporary and cutting-edge art as well as commissioning artists to create site-specific pieces.

The gallery programme includes a regular lineup of talks, seminars, panel discussions and conversations with artists, curators and key partners. The gallery delivers its commitment to providing a long-term supportive environment for emerging talent through free access to mentorship programs, workshops, residency opportunities and innovative educational activities that facilitate artistic development. It also stages events across the cultural spectrum, such as concerts, performances, symposiums, publications, collaborative projects, film screenings, and learning-orientated incubator programmes.

Emami Art  
Kolkata Centre for Creativity  
777, Anandapur EM Bypass  
Kolkata – 700 107, West Bengal, India  
[www.emamiart.com](http://www.emamiart.com)

